

LONGWOOD UNIVERSITY



**Reclassifying
NCAA
Division I**

Greg Prouty, Assistant AD for Media Relations • Office: 434.395.2097 • Cell: 434.390.0571
Athletics Complex, T2 M • 201 High Street • Farmville, VA 23909-1899
E-Mail: proutygd@longwood.edu • Fax: 434.395.2568 • www.longwoodlancers.com

Longwood University All-Time versus 2005-06 Opponents

Nebraska	0-1
Louisiana Tech	0-1
Yale	0-1
Virginia-Wise	5-1
William and Mary	0-2
Liberty	15-6
UMKC	0-2
Kansas State	0-1
Villanova	0-1
High Point	4-9
Valparaiso	0-3
VCU	0-1
College of Charleston	0-1
Long Island	1-0
Richmond	0-1
IPFW	1-1
Navy	0-2
Savannah State	0-1
Hartford	1-1
North Carolina A&T	1-0
Texas A&M-Corpus Christi	0-2
Shenandoah	3-0
Virginia	0-1
James Madison	1-1
Hampton	0-0
Utah Valley State	0-3
Totals	32-43 (.427)

2005-06 Division I Independent Records (through February 18)

<u>Team</u>	<u>Record</u>	<u>Pct.</u>
Texas A&M-CC	17-8	.680
North Dakota State	15-10	.600
Utah Valley State	13-12	.520
UC Davis	8-16	.333
Longwood	8-19	.296
IPFW	7-17	.292
South Dakota State	7-17	.292
Texas-Pan American	7-20	.259
Northern Colorado	4-23	.148
Savannah State	2-26	.071

MEN'S BASKETBALL NOTES GAME #28 FEBRUARY 20, 2006

Opponent Hampton
Site Hampton, Virginia
Facility Convocation Center
..... (7,200)
Tip-Off 7 p.m.
Radio WVHL, 92.9 FM
Talent Jon Schaeffer
Internet
..... www.longwoodlancers.com



Probable Starters

LONGWOOD LANCERS (8-19)
F 1-Clayton Morgan, 6-7, Jr.
11.9 ppg., 8.6 rpg., 1.6 apg.
G 10-Brandon Giles, 5-10, So.
3.8 ppg., 1.7 rpg., 3.3 apg.
G-F 22-Dana Smith, 6-5, So.
8.9 ppg., 4.4 rpg., 1.4 apg.
G-F 45-Maurice Sumter, 6-5, Jr.
15.5 ppg., 5.3 rpg., 2.7 apg.
F 50-Lamar Barrett, 6-6, So.
7.2 ppg., 3.6 rpg., 1.8 apg.

HAMPTON PIRATES (11-12)

G 2-Matthew Williams, 6-2, Jr.
5.2 ppg., 2.9 rpg., 3.0 apg.
G 11-Jeff Granger, 6-3, Sr.
12.4 ppg., 3.8 rpg., 1.4 apg.
F 20-Lionel Pehoua, 6-5, So.
4.1 ppg., 3.2 rpg., 0.3 apg.
G 23-Dewayne Spencer, 6-3, Jr.
2.5 ppg., 2.0 rpg., 1.4 apg.
F 32-Jaz Cowan, 6-9, Jr.
15.1 ppg., 7.3 rpg., 1.2 apg.



Longwood University 2005-06 Men's Basketball Schedule/Results

November

18 @Nebraska*-1	L 65-80
19 vs. Louisiana Tech*-1	L 73-83
20 vs. Yale*-1	L 67-70
26 Virginia-Wise	W 93-49
28 William and Mary*	L 75-88
30 Liberty*	W 88-75

December

3 @UMKC*	L 69-79
5 @Kansas State*	L 60-89
10 vs. #4 Villanova*#	L 77-90
17 High Point*	L 72-88
20 Valparaiso*	L 79-82
22 @VCU*	L 80-91
29 @Charleston*-2	L 53-77
30 vs. Long Island*-2	W 86-69

January

2 @Richmond*	L 60-74
5 @IPFW	L 90-92 ot
7 @Valparaiso	L 73-105
17 @Navy	L 65-71
21 @Savannah State	L 69-70
28 Hartford*	W 93-90 ot
30 IPFW*	W 60-59

February

2 North Carolina A&T	W 83-77
4 @Texas A&M-CC	L 64-92
8 Shenandoah	W 87-68
13 @Liberty*	L 66-75
15 @Virginia*	L 56-91
18 James Madison*	W 77-73
20 @Hampton*	7:00
25 Savannah State*	2:00

March

4 Utah Valley State*	3:00
----------------------	------

All Times Eastern

Home Games In **Bold**

1-John Thompson Foundation
Basketball Challenge; Lincoln, Neb.

2-College of Charleston

Holiday Classic; Charleston, S.C.

*WVHL, 92.9 FM Kickin' Country

#Boardwalk Hall; Atlantic City, N.J.

Longwood University Career Games/Games Started

No.-Player	G/GS
45-Maurice Sumter	84/84
32-Husein Pistoljevic	83/30
20-Michael Jefferson	73/73
50-Lamar Barrett	58/58
10-Brandon Giles	58/16
22-Dana Smith	57/16
42-Chad Kosmo	48/37
00-Darren Holmes	48/0
15-Joel Rowe	45/1
44-Leland Beale	41/0
30-Jon Larson	33/0
1-Clayton Morgan	27/21
3-Kirk Williams	27/0
12-Bryan Butler	17/10

2005-06 LONGWOOD UNIVERSITY RECORD WHEN ...

Playing ranked teams	0-1
Leading at the half	7-5
Trailing at the half	1-13
Tied at the half	0-1
In overtime	1-1
Outrebounding opponent	7-5
Opp. outrebounds LU	1-12
Teams tie in rebounds	0-2
Shooting 50% or better	4-2
Shooting less than 50%	4-17
Opp. shoots 50% or better	1-11
Opp. shoots less than 50%	7-8
LU shoots better than opp.	6-1
Opp. shoots better than LU	2-18
LU scores 80 or more	6-2
LU scores less than 80	2-17
Opp. scores 80 or more	1-11
Opp. scores less than 80	7-8
LU has 5 or more 3s	6-11
LU has less than 5 3s	2-8
LU has 15 or less TOs	6-5
LU has more TOs than opp.	1-11

Series History

Longwood University and Hampton University are meeting for the first-time ever in the sport of men's basketball.

Coaches Corner

Longwood University head coach Mike Gillian (North Adams State, 1986) is in his third year guiding the Lancers. His overall record at Longwood is 14-71, including 8-19 this year, also his third year as a collegiate head coach.

Hampton head coach Bobby Collins (Eastern Kentucky, 1991) is in his fourth year with the Pirates. His overall record at HU is 60-53, including 11-12 this year, also his fourth year as a collegiate head coach.

The Ratings Game

Longwood, competing in year three of its NCAA Division I Reclassification (second season against a Division I schedule), is rated from 312 to 320 among the 334 Division I men's basketball-playing institutions in the following four rating services: the Sagarin Ratings (312, 61.34), Ken Pomeroy's College Basketball RPI (315, .3832), the RPIRatings.com (316, .3857), and the CollegeRPI.com (320, .3761). The average rating is 316.

Hampton is rated from 273 to 300 in the same four ratings: the Sagarin Ratings (273, 66.01), the RPIRatings (290, .4192), CollegeRPI (297, .4140), and Pomeroy's RPI (300, .4099). The average rating is 290.

Common Opponents

Longwood and Hampton have each played North Carolina A&T, Richmond, Savannah State, VCU, William and Mary, and Yale. The Lancers defeated N.C. A&T 83-77 at home (Feb. 2); lost to Richmond 74-60 on the road (Jan. 2); lost to Savannah State 70-69 on the road (Jan. 21); lost to VCU 91-80 on the road (Dec. 22); lost to W&M 88-75 at home (Nov. 28); and lost to Yale 70-67 in Lincoln, Nebraska (Nov. 20). The Pirates defeated N.C. A&T 77-65 at home (Jan. 30); lost to Richmond 44-40 on the road (Nov. 18); defeated Savannah State 100-57 at home (Jan. 23); lost to VCU 84-44 at home (Dec. 30); lost to W&M 70-60 at home (Nov. 22); and lost to Yale 71-52 on the road (Dec. 18).

About Hampton

Hampton is 11-12 after an 88-77 road loss at Delaware State Feb. 18. The Pirates were led by Jaz Cowan with 23 points and Jeff Granger with 20 points. HU trailed 35-20 at halftime before outscoring the hosts 57-53 in the second half.

Hampton has been led in scoring by Cowan (15.1), followed by Granger (12.4) and Bruce Brown (10.9). Cowan also leads the team in rebounding (7.3). The Pirates are scoring 67.7 points while allowing opponents 64.7 (+3.0), shooting 43% from the field, 33% on three-point field goals, and 59% at the line.

About Longwood

Longwood is 8-19 following a 77-73 home win past James Madison Feb. 18. The Lancers were led by Maurice Sumter with 27 points, followed by Brandon Giles with a career-high 21 points, along with Clayton Morgan (14) and Lamar Barrett (11). LU trailed 39-38 at halftime before outscoring the visitors 39-34 in the second half.

Longwood has been led in scoring by

Sumter (15.5), followed by Morgan (11.9) who also leads the team in rebounding (8.6). The Lancers are scoring 73.3 points while allowing opponents 79.5 (-6.2), shooting 43% from the field, 32% on three-pointers, and 68% at the line.

Home Sweet Home

Longwood is 7-3 at home this season, including five-straight wins. The Lancers are averaging 80.7 points, while allowing 74.9 (+5.8), shooting 47% from the field and 75% at the line, out-rebounding opponents 37.3-33.2 (+4.1), and have a +3.6 turnover margin (13.7-17.3). Attendance has been good too, averaging 1,039 overall, but nearly 1,400 for the seven games when the students have been on-campus (1,371).

Youngster Leading The Way

Maurice Sumter, a junior, just turned 20 on Nov. 5 and is younger than 10 of his teammates. He has not let his youthfulness limit him, though, as he leads the Lancers in minutes (858-33.0), points (402), scoring average (15.5), field goals (158-6.1), field goal attempts (321-12.3), steals (51-2.0), and blocks (23-0.9). Sumter has led the Lancers in scoring 10 times, in steals 12 times, in blocks 10 times, in assists nine times, and in rebounding three times.

Sumter has posted season-highs of 28 points (IPFW, Jan. 30), nine rebounds (Liberty, Nov. 30), five assists on six occasions, five steals on two occasions, and three blocks on two occasions.

Sumter Joins 1,000-Point Club

Sumter became just the 15th player in the program's history to join the 1,000-point club with his 16-point effort at Liberty (Feb. 13). He enters tonight's game at Hampton with 1,039 career points. Sumter was named the Division I Independent Player of the Week Feb. 7 for his three-game efforts Jan. 30-Feb. 5 that included averages of 20.0 points, 4.7 rebounds, 4.0 assists, 3.0 steals, and 1.3 blocks while shooting 51% (22-43) from the field, including 50% (5-10) on three-pointers, and 65% (11-17) at the line.

Morgan Tough Inside

Clayton Morgan (6-7, 230) continues to play strong inside for Longwood. He has started 21 of the last 23 games and is averaging 11.9 points and 8.6 rebounds overall, though he is averaging 13.0 points and 9.2 rebounds over the last 23 games since making his first start.

Morgan has posted season-highs of 28 points (NC A&T, Feb. 2), 16 rebounds on two occasions, and five assists on two occasions.

2005-06 LONGWOOD UNIVERSITY NUMERICAL ROSTER

No.	Name	Position	Year	Ht.	Wt.	Hometown/Last School
00	Darren Holmes••	Forward	Junior	6-6	215	Virginia Beach, Va./Princess Anne
1	Clayton Morgan	Forward	Junior	6-7	230	Brooklyn, N.Y./Fashion Institute (JC)
3	Kirk Williams	Forward	Freshman	6-6	180	White Plains, N.Y./Woodlands
10	Brandon Giles•	Guard	Sophomore	5-10	150	Gaithersburg, Md./Magruder
12	Bryan Butler	Guard	Freshman	6-0	170	Woodbridge, Va./Potomac
15	Joel Rowe••	Guard	Junior	6-1	190	Colonial Heights, Va./Colonial Heights
20	Michael Jefferson••@	Guard	Junior	6-3	200	Chesterfield, Va./Meadowbrook
22	Dana Smith•	Guard-Forward	Sophomore	6-5	225	Woodbridge, Va./C.D. Hylton
30	Jon Larson••	Forward	R-Junior	6-6	190	Leesburg, Va./Loudoun County
32	Husein Pistoljevic••@	Guard	Junior	6-2	185	Richland, Wash./Hanford
42	Chad Kosmo•	Center	Senior	6-11	260	Northport, Maine/St. Petersburg (JC)
44	Leland Beale••	Forward-Center	Junior	6-8	255	Poquoson, Va./Oak Ridge Military
45	Maurice Sumter••@	Guard-Forward	Junior	6-5	180	Alexandria, Va./T.C. Williams
50	Lamar Barrett•	Forward	Sophomore	6-6	190	Providence, R.I./St. Andrew's School

•Returning Letterwinners; @Captains

Head Coach: Mike Gillian

Assistant Coaches: Bill Reinson, Doug Thibault, Michael Huger

PRONUNCIATION: Brandon Giles (Jiles), Chad Kosmo (Koz-mo), Husein Pistoljevic (Hoo-sane Pis-tol-lee-uh-vich), Joel Rowe (Row), Mike Gillian (Gil-leeun), Michael Huger (Hyou-ger), Doug Thibault (T-bow)

sions. He has led the team in scoring five times, in rebounding 17 times while posting six double-figure rebounding efforts and five double-doubles, in blocks four times, in steals three times, and in assists one time.

Morgan leads the team in total rebounds (231), rebounding average (8.6), free throws (95-3.5), free throw attempts (133-4.9), offensive rebounds (88-3.3), and defensive rebounds (143-5.3). He was the Division I Independent Newcomer of the Week Jan. 31 for his double-double of 20 points and 12 rebounds, along with a career-high five assists and two steals during a 93-90 overtime victory past visiting Hartford on Jan. 28.

Smith Makes Most Of Starts

Dana Smith has made the most of his 12 starting assignments of the season. He scored a career-high 19 points against NC A&T (Feb. 2); and has grabbed a career-high 10 rebounds on two occasions.

Smith has played in all 27 games this year and is averaging 8.9 points and 4.4 rebounds. As a starter, he is averaging 11.0 points and 6.2 rebounds.

Smith has led the team in scoring two times, in blocks 11 times, in both rebounding and steals five times, and in assists one time.

Giles With Career-High Effort

Brandon Giles scored a career-high 21 points against James Madison (Feb. 18). He was 5-5 from the field, all three-point field goals, and 6-8 at the free throw line while adding a career-high six rebounds along with six assists -- playing the full 40 minutes. Earlier this season, he had 15

points against Shenandoah (Feb. 8), making 4-6 from the field, including 4-5 on three-pointers, and 3-4 at the line while adding six assists.

Giles has also played in all 27 games, starting 16, and is averaging 3.8 points and 3.3 assists. He dished out a career-high eight assists against Hartford (Jan. 28), and is averaging 4.0 assists as a starter. Giles has led the team in assists 10 times, and in steals one time.

Barrett With Season-High Effort

Lamar Barrett scored a season-high 18 points against Hartford (Jan. 28). He was 8-11 from the field, and 2-3 at the line while adding five rebounds. Barrett has started every game this season, averaging 7.2 points and 3.6 rebounds. He also has posted season-highs of seven rebounds (IPFW, Jan. 5), five assists (IPFW, Jan. 5), and three steals on four occasions. Earlier this season, he had 16 points at IPFW (Jan. 5), making 7-13 from the field, including 2-4 on three-pointers while adding seven rebounds and five assists.

Impressive Freshman

Kirk Williams, the youngest member of the team (19), has been impressive while making his debut for Longwood this season. Williams has played in all 27 games off the bench while posting 7.6 points and 4.2 rebounds, shooting a team-best 55% (78-142) from the field.

Williams has posted career-highs of 17 points on two occasions, nine rebounds (UVA-Wise, Nov. 26), two assists on five occasions, and two steals on two occasions. He also has eight highlight-reel dunks this

year against Nebraska (Nov. 18), Louisiana Tech (Nov. 19), Liberty (Nov. 30), #4 Villanova (Dec. 10), VCU (Dec. 22), Shenandoah (Feb. 8), Liberty (Feb. 13), and Virginia (Feb. 15).

Injuries End Jefferson's Season

Michael Jefferson has had his season ended by injuries. Since suffering an ankle injury against Valparaiso (Dec. 20), he missed both games played in his hometown (VCU, Dec. 22; Richmond, Jan. 3) while seeing limited action in three other games. Jefferson returned and injured the other ankle against Long Island (Dec. 30), before incurring a severe groin injury at Valparaiso (Jan. 7). That injury has ended his campaign.

Prior to the season-ending injury, Jefferson was second in scoring (12.8) and led the team in three-point field goal percentage (.396, 21-53). He had posted season-highs of 26 points (Louisiana Tech, Nov. 19), six rebounds (Liberty, Nov. 30), four assists (#4 Villanova, Dec. 10), three steals on three occasions, and two blocks (#4 Villanova, Dec. 10).

Injuries Affect Three Others

Chad Kosmo, along with Leland Beale and Jon Larson have each missed games this season due to injuries. Kosmo, a starter in six of 17 games (2.6 rebounds), missed seven games with an ankle injury suffered against UVA-Wise (Nov. 26), his first games missed as a Lancer since joining the program before last season.

Beale, a reserve, had back surgery in August and will not play this season. Larson, also a reserve, saw his first action

**2005-06 ESPN/USA Today
Coaches Poll**
(as of February 13)

1. Connecticut (22)	759
2. Duke (8)	749
3. Memphis (1)	710
4. Villanova	678
5. Gonzaga	632
6. Texas	627
7. Florida	539
8. George Washington	534
9. Pittsburgh	512
10. Tennessee	504
11. West Virginia	445
12. Ohio State	436
13. <i>Illinois</i>	377
14. UCLA	348
15. Boston College	326
16. Michigan State	301
17. Georgetown	269
18. North Carolina State	260
19. Oklahoma	239
20. Iowa	205
21. Washington	139
22. Kansas	118
23. North Carolina	100
24. Bucknell	50
25. LSU	42

2005-06 Associated Press Poll
(as of February 13)

1. Connecticut (67)	1,795
2. Duke (4)	1,726
3. Memphis	1,635
4. Villanova (1)	1,581
5. Gonzaga	1,502
6. Texas	1,457
7. George Washington	1,289
8. Tennessee	1,218
9. Pittsburgh	1,177
10. Florida	1,157
11. West Virginia	1,103
12. Ohio State	953
13. Boston College	836
14. <i>Illinois</i>	825
15. UCLA	709
16. Michigan State	679
17. Georgetown	674
18. Iowa	596
19. Oklahoma	471
20. Washington	459
21. North Carolina State	435
22. Kansas	297
23. North Carolina	291
24. Bucknell	133
25. LSU	68

2005-06 Longwood University
opponents in **bold**;
2004-05 Longwood University
opponents in *italics*

at Texas A&M-Corpus Christi (Feb. 4) after missing the first 22 games with a back injury.

Butler Done For Season

Bryan Butler, a freshman, will not play for the remainder of the season while concentrating his efforts to his academic studies. He had started 10 of 17 games while averaging 9.6 points, and had led the team in three-point field goals (32-1.9), three-point attempts (90-5.3), and free throw percentage (.926, 25-27).

Road Weary Program

Longwood played 14 of its first 19 games away from Farmville this season, and overall, play 18 of 30 games away from home. The Lancers are 0-13 in true road games this season, and have not won a true road game since Nov. 25, 2003, a 63-62 win at Lenoir-Rhyne (N.C.) -- 38 consecutive road losses.

The Lancers played 20 of 31 games away from home a year ago, including a grueling 16-day, seven-game period from Dec. 26-Jan. 10. That trip included contests, in order, played in Illinois (1), Las Vegas (2), Connecticut (2), Utah (1), and Colorado (1).

Longwood has won two neutral-site games over the last three seasons: 86-69 past Long Island this year on Dec. 30 in Charleston, South Carolina; and 76-66 past Northern Colorado back on March 5, 2004. The Lancers are 2-9 in neutral-site games during this time.

Sumter Earns All-Tournament Honor

Maurice Sumter was named to the College of Charleston Holiday Classic All-Tournament Team (Dec. 29-30). He posted 22 points (11.0), 10 rebounds (5.0), eight assists (4.0), and four steals (2.0). Sumter was 10-20 from the field, including 2-4 on three-pointers, to earn his first collegiate All-Tournament honor.

Pistoljevic In The Record Book

Husein Pistoljevic (3.7 points) made nine three-point field goals against Virginia Union at home on Feb. 5, 2004 to establish a new single-game record for three-pointers, also a Willett Hall-record.

For his career, Pistoljevic totals 153 three-pointers to rank third all-time. This season, he has 22 three-pointers among his 32 total field goals (69%).

Jefferson Joins 1,000-Point Club

Michael Jefferson surpassed 1,000 career points at Longwood during an 89-60 road loss at Kansas State (Dec. 5). He became the 14th Lancer to score 1,000 career

**LONGWOOD UNIVERSITY
AT HAMPTON
BY THE NUMBERS**

Category	LU	HU
Scoring Off.	73.3	67.7
Scoring Def.	79.5	64.7
Scoring Margin	-6.2	+3.0
Rebound Avg.	37.0	38.5
Rebound Margin	-0.1	+4.2
Off. Rebounds	13.7	13.2
Def. Rebounds	23.3	25.3
FG Percentage	42.8	43.0
3FG Percentage	32.4	33.1
3FGs Made	5.7	5.9
FT Percentage	67.5	59.4
FG% Defense	47.4	40.9
Assists	15.5	13.2
TO Margin	-0.1	-0.2
Blocks	2.7	2.6
Steals	7.7	7.9

INDIVIDUAL LEADERS

Scoring Average

Name	Points	Avg.
Maurice Sumter	402	15.5
Clayton Morgan	321	11.9
Dana Smith	241	8.9

Field Goal %

Name	FG-A	FG%
Kirk Williams	78-142	.549
Maurice Sumter	158-321	.492
Dana Smith	85-193	.440

Free Throw %

Name	FT-A	FT%
Brandon Giles	26-33	.788
Maurice Sumter	64-86	.744
Clayton Morgan	95-133	.714

Three-Point Field Goal %

Name	3FG-A	3FG%
Maurice Sumter	22-62	.355
Dana Smith	20-62	.323
Brandon Giles	22-69	.319

Rebounding Average

Name	Rebounds	Avg.
Clayton Morgan	231	8.6
Maurice Sumter	138	5.3
Dana Smith	120	4.4

Assist Average

Name	Assists	Avg.
Brandon Giles	88	3.3
Maurice Sumter	69	2.7
Lamar Barrett	49	1.8

Steal Average

Name	Steals	Avg.
Maurice Sumter	51	2.0
Lamar Barrett	35	1.3
Clayton Morgan	22	0.8

Block Average

Name	Blocks	Avg.
Maurice Sumter	23	0.9
Dana Smith	19	0.7
Lamar Barrett	10	0.4

points, and currently totals 1,078 points (13th all-time) in 73 career games (14.8).

The all-time leading scorer at Longwood is Kevin Jefferson (1986-90, no relation to Michael) who totaled 1,806 career points. Number two on the list? None other than Jerome Kersey (1980-84) who scored 1,756 career points for the Lancers. The former 17-year NBA veteran was inducted into the Longwood University Athletics Hall of Fame (inaugural class) Nov. 27.

Jefferson Keeps Streak Alive

Michael Jefferson has been named to All-Tournament Teams for three-straight seasons. He was selected to the season-opening John Thompson Foundation Challenge All-Tournament Team for his three-game efforts in Lincoln, Nebraska Nov. 18-20, averaging 12.3 points and 2.7 assists, including a team-high 26 points against Louisiana Tech (Nov. 19).

Jefferson was also named to the Las Vegas Holiday Classic All-Tournament Team last Dec. 23-31 after averaging 24.6 points, 5.4 rebounds, and 4.2 assists against four NCAA Tournament teams from the previous year; including #1 Illinois (30 points, 6 assists) #17 Cincinnati (27 points), Northern Iowa (20 points), and Valparaiso (22 points).

He was picked for the National Provisional All-Tournament Team March 4-5, 2004 after averaging 20.0 points, 4.5 rebounds, 4.0 steals, and 3.0 assists in two games played in Fort Myers, Florida at Florida Gulf Coast University.

The Consecutive Three-Point Stat

Longwood has made at least one three-point field goal in 111-straight games, including a high of 13 (Virginia Union, Feb. 5, 2004) and a low of one on five occasions. The last time the Lancers did not connect on at least one three-pointer was Nov. 26, 2002, ironically, a 72-68 road win at Lenoir-Rhyne (N.C.).

Historic Venues

Longwood has played two games this season in historic venues. The game against #4 Villanova (Dec. 10) was played in Boardwalk Hall and had been arranged by the Atlantic City Convention & Visitors Authority, in conjunction with the New York-based Worldwide Marketing & Media Group, and was the first Division I men's basketball game in Atlantic City in nine years.

Most notable among many, many significant events that have taken place in Boardwalk Hall over the years is *The Miss America Pageant*, contested on the Boardwalk for over 50 years.

Longwood played UMKC (Dec. 3) in

Municipal Auditorium located in downtown Kansas City, Missouri. That storied facility has hosted more NCAA Tournament Final Fours than any other venue as nine National Championships have been played in the building, though the last was in 1965. The 9,827-seat facility has also hosted the NAIA National Tournament for over 50 years.

Four Starters Return; 94% Of Offense Back

Longwood returned four starters for 2005-06 among 11 letterwinners from a year ago, including the top eight scorers overall who combined for 94 percent (1,865 of 1,978 points) of the team's offense. The same eight combined to play 5,688 of the squad's 6,275 minutes overall (91%), each of the eight players averaging at least 15.0 minutes per game.

The returning starters are Lamar Barrett, Michael Jefferson, Chad Kosmo, and Maurice Sumter. Sumter (84), Jefferson (73), and Barrett (58) have each started every game of their respective careers.

Preseason Honors

Michael Jefferson was named to the pre-season Street & Smith's magazine All-Independents Team, as well as the Lindy's magazine All-Independent first-team.

Maurice Sumter was named to the pre-season Lindy's magazine Independent Honor Roll as the Most Versatile.

Lamar Barrett was named to the pre-season Lindy's magazine All-Independent second-team. He was also named to the Columbia Classic All-Tournament Team while making his collegiate debut a year ago, averaging 17.5 points during his first two appearances.

Gillian Names Junior Captains

Coach Gillian named his captains for 2005-06: Michael Jefferson, Maurice Sumter, and Husein Pistoljevic. This is Jefferson's third-straight year (first freshman to ever do so) serving as a team captain and Sumter's second consecutive season as a team captain; Pistoljevic is a first-time team captain.

Talented Newcomers

Coach Gillian's third recruiting class includes junior college transfer Clayton Morgan, along with freshmen Bryan Butler and Kirk Williams. Morgan averaged a double-double of 18.4 points and 11.5 rebounds a year ago while earning All-Region XV honors at NJCAA Division III Fashion Institute (N.Y.).

Butler averaged 14.3 points at prep school Coastal Christian Academy in Virginia Beach last season while shooting 46% (83-

2005-06 LONGWOOD UNIVERSITY INDIVIDUAL SUPERLATIVES

20-Point Games

Maurice Sumter (5)		
Date	Points	Opponent
1-30-06	28	IPFW
2-18-06	27	James Madison
12-20-05	25	Valparaiso
1-28-06	23	Hartford
1-21-06	22	Savannah St.

Michael Jefferson (3)

Date	Points	Opponent
11-19-05	26	Louisiana Tech
11-30-05	22	Liberty
1-5-06	21	IPFW

Clayton Morgan (3)

Date	Points	Opponent
2-2-06	28	NC A&T
12-20-05	25	Valparaiso
1-28-06	20	Hartford

Brandon Giles (1)

Date	Points	Opponent
2-18-06	21	James Madison

10-Rebound Games

Clayton Morgan (6)		
Date	Rebounds	Opponent
12-3-05	16	UMKC
12-30-05	16	Long Island
12-17-05	15	High Point
12-20-05	13	Valparaiso
1-28-06	12	Hartford
1-21-06	10	Savannah St.

Dana Smith (2)

Date	Rebounds	Opponent
1-30-06	10	IPFW
2-8-06	10	Shenandoah

Double-Doubles

Clayton Morgan (5)		
Date	Pts	Rebs
12-3-05	13	16
12-20-05	25	13
12-30-05	16	16
1-21-06	18	10
1-28-06	20	12

Dana Smith (1)

Date	Pts	Rebs
2-8-06	17	10

5-Assist Games

Brandon Giles (9)		
Date	Assists	Opponent
1-28-06	8	Hartford
2-13-06	7	Liberty
1-21-06	6	Savannah St.
2-8-06	6	Shenandoah
2-18-06	6	James Madison
11-18-05	5	Nebraska
1-17-06	5	Navy
1-30-06	5	IPFW
2-2-06	5	NC A&T

Maurice Sumter (6)

Date	Assists	Opponent
11-20-05	5	Yale
12-20-05	5	Valparaiso
12-30-05	5	Long Island
1-5-06	5	IPFW
2-2-06	5	NC A&T
2-4-06	5	Texas A&M-CC

Clayton Morgan (2)

Date	Assists	Opponent
12-20-05	5	Valparaiso
1-28-06	5	Hartford

Michael Jefferson (1)

Date	Assists	Opponent
11-30-05	5	Liberty

Lamar Barrett (1)

Date	Assists	Opponent
1-5-06	5	IPFW

4-Steal Games

Maurice Sumter (3)		
Date	Steals	Opponent
2-4-06	5	Texas A&M-CC
2-8-06	5	Shenandoah
2-2-06	4	NC A&T

Longwood University

Location Farmville, Virginia
Founded 1839
Enrollment 4,350
Nickname Lancers
Colors Blue & White
Affiliation ... *Reclassifying Division I*
Conference Independent
Facility Willett Hall (2,522)
President Dr. Patricia P. Cormier
Alma Mater Boston University
Director of Athletics .. Rick Mazzuto
Alma Mater Trinity (Conn.)
..... (1971)
Athletics Phone 434.395.2057

Coaching Staff

Head Coach Mike Gillian
Alma Mater
..... North Adams State (1986)
Career Record 14-71 (2+)
Record At Longwood 14-71 (2+)
Office Phone 434.395.2838
E-Mail gillianjm@longwood.edu
Best Time to Contact Mornings
.... Coordinate Through Greg Prouty
Assistant Coach Bill Reinson
Alma Mater Phoenix (2000)
Office Phone 434.395.2891
E-Mail reinsonwf@longwood.edu
Assistant Coach Doug Thibault
Alma Mater Boise State (1998)
Office Phone 434.395.2654
E-Mail ... thibaultde@longwood.edu
Assistant Coach Michael Huger
Alma Mater Bowling Green
..... (1993)
Office Phone 434.395.2733
E-Mail hugerma@longwood.edu

Team Information

2004-05 Record 1-30
Home Record 1-10
Away Record 0-16
Neutral Record 0-4
Letterwinners Returning/Lost
..... 11/3
Starters Returning/Lost 4/1
Newcomers 3

Program History

First Year 1976
All-Time Record 408-402
NCAA Tournament Appearances
..... 4
Most Recent 2001
.. Division II East Region Semifinals
..... Queens (N.C.), L 77-76 OT

Honors Candidate

..... Michael Jefferson
.... 2005 All-Independent 2nd-Team

181) on three-point field goals. Williams averaged 17.1 points and 7.6 rebounds at Woodlands (N.Y.) High School.

Charting New Territory

Longwood University is playing 30 Division I games for the second-straight year during 2005-06, and will face 14 institutions for the first-time ever. These include Nebraska (Nov. 18), Louisiana Tech (Nov. 19), Yale (Nov. 20), Kansas State (Dec. 5), #4 Villanova (Dec. 10), VCU (Dec. 22), College of Charleston (Dec. 29), Long Island (Dec. 30), Richmond (Jan. 2), IPFW (Jan. 5 & Jan. 30), Savannah State (Jan. 21 & Feb. 25), North Carolina A&T (Feb. 2), Virginia (Feb. 15), and Hampton (Feb. 20).

Roster Spans Six States

Longwood University's 14-player roster features student-athletes from six states. The Commonwealth of Virginia leads the way with eight, including Leland Beale (Poquoson), Bryan Butler (Woodbridge), Darren Holmes (Virginia Beach), Michael Jefferson (Chesterfield), Jon Larson (Leesburg), Joel Rowe (Colonial Heights), Dana Smith (Woodbridge), and Maurice Sumter (Alexandria).

Other states represented include New York (two): Clayton Morgan (Brooklyn) and Kirk Williams (White Plains); Maine (one): Chad Kosmo (Northport); Maryland (one): Brandon Giles (Gaithersburg); Rhode Island (one): Lamar Barrett (Providence); and Washington (one): Husein Pistoljevic (Richland).

This And That On The Lancers

Maurice Sumter graduated from T.C. Williams High School in Alexandria, Virginia -- that's the same high school made famous in the movie "Remember The Titans."

Husein Pistoljevic was born in Bosnia and lived there for 11 years before moving to Washington state with his parents and an older brother.

Lamar Barrett scored his 1,000th career point in high school on a set-play, designed by his St. Andrews (R.I.) School head coach Mike Hart, a play called "Longwood."

A cousin of Clayton Morgan is New York Yankee pitcher Tom Gordon.

The Coaching Staff

Third-year head coach Mike Gillian was previously an assistant at George Mason University under head coach Jim Larranaga from 1997-2003. He had also worked under Larranaga for one season at Bowling Green State (1996-97) prior to arriving at George Mason.

During Gillian's six seasons as an assistant coach at Mason, the Patriots went 100-

74 overall, including a 66-34 CAA record, winning two CAA Tournament championships (1999, 2001) and two CAA regular season titles (1999, 2000). George Mason also earned two NCAA Tournament appearances (1999, 2001) and made one National Invitation Tournament (NIT) appearance (2002).

Coach Gillian's staff includes Bill Reinson, in his fourth year with the program, along with third-year staff member Doug Thibault and first-year assistant Michael Huger. Huger played for Larranaga at BGSU (1989-93), and was runner-up to Ohio's Gary Trent for MAC Player of the Year in 1993.

Program Has Over 400 Wins

Longwood University, competing in its 30th year, enters tonight's game with an overall record of 408-402 (.504). The Lancers have enjoyed 17 seasons at a .500 record or above, including four NCAA Tournament appearances (5-6 record - 1980, 1994, 1995, 2001). Longwood advanced to the Division III Final Four in 1980, and made three Division II Tournament appearances.

Seven former Longwood players have earned All-America honors, including one National Player of the Year, Colin Ducharme (2001). Ducharme is currently a graduate student at Massachusetts Institute of Technology (MIT) enrolled in its Leaders for Manufacturing Program working toward a dual masters degree in both business and engineering. Ironically, he attended Longwood as a graduate student after earning his degree from Virginia with a year of eligibility remaining due to a medical red-shirt year with the Cavaliers.

The Lancers also boast one former player who played in the NBA as Jerome Kersey (1980-84) spent 17 years in the league, 11 with the Portland Trail Blazers. Kersey spent 2004-05 as an assistant coach with the Milwaukee Bucks.

How Times Have Changed

Amazing how things have changed at Longwood University, located in historic Farmville, Virginia (population 6,500), approximately 65 miles west of Richmond. Founded in 1839 as the Farmville Female Seminary Association, the commonwealth acquired the school in 1884 and it became the first state institution of higher learning for women in Virginia, eventually becoming fully coeducational in 1976.

Presently, Longwood has a combined undergraduate and graduate enrollment of 4,350 and best of all, the Lancers have an intercollegiate athletics program on the cusp of Division I certification.

CAREER-HIGH TOTALS FOR 2005-06 LANCERS

#00 Darren Holmes

Points: 8
Southern Virginia, 2-14-04
FG Made: 4
Southern Virginia, 2-14-04
FG Attempts: 7
at Southern Virginia, 1-14-04
3FG Made: 0
3FG Attempts: 0
FT Made: 3
two times
FT Attempts: 6
at Virginia Union, 12-6-03
Rebounds: 4
at Virginia, 2-15-06
Assists: 1
four times
Steals: 1
three times
Blocks: 2
at Florida Gulf Coast, 3-4-04
Minutes: 23
at Southern Virginia, 1-14-04

#1 Clayton Morgan

Points: 28
North Carolina A&T, 2-2-06
FG Made: 9
two times
FG Attempts: 18
Valparaiso, 12-20-05
3FG Made: 1
seven times
3FG Attempts: 3
vs. Yale, 11-20-05
FT Made: 10
North Carolina A&T, 2-2-06
FT Attempts: 12
North Carolina A&T, 2-2-06
Rebounds: 16
two times
Assists: 5
two times
Steals: 3
at Navy, 1-17-06
Blocks: 1
five times
Minutes: 41
Hartford, 1-28-06

#3 Kirk Williams

Points: 17
two times
FG Made: 7
two times
FG Attempts: 9
Liberty, 11-30-05
3FG Made: 0
3FG Attempts: 0
FT Made: 7
at Savannah State, 1-21-06
FT Attempts: 15
at Savannah State, 1-21-06
Rebounds: 9
Virginia-Wise, 11-26-05
Assists: 3
two times
Steals: 2
two times
Blocks: 1
two times
Minutes: 28
at Virginia, 2-15-06

#10 Brandon Giles

Points: 21
James Madison, 2-18-06
FG Made: 5
two times
FG Attempts: 9
Hartford, 1-28-06
3FG Made: 5
James Madison, 2-18-06
3FG Attempts: 6
two times
FT Made: 6
James Madison, 2-18-06
FT Attempts: 8
James Madison, 2-18-06
Rebounds: 6
two times
Assists: 8
Hartford, 1-28-06
Steals: 2
six times
Blocks: 1
two times
Minutes: 45
Hartford, 1-28-06

#15 Joel Rowe

Points: 6
at Southern Virginia, 1-14-04
FG Made: 2
two times
FG Attempts: 3
at #6 Wake Forest, 2-23-05
3FG Made: 1
three times
3FG Attempts: 1
16 times
FT Made: 2
two times
FT Attempts: 3
at Southern Virginia, 1-14-04
Rebounds: 3
two times
Assists: 4
at Saint Paul's, 1-29-04
Steals: 2
at #6 Wake Forest, 2-23-05
Blocks: 1
at William and Mary, 12-1-04
Minutes: 13
at Saint Paul's, 1-29-04

#20 Michael Jefferson

Points: 30
at #1 Illinois, 12-27-04
FG Made: 11
two times
FG Attempts: 23
at Quinnipiac, 1-2-05
3FG Made: 6
vs. Valparaiso, 12-31-04
3FG Attempts: 16
vs. Valparaiso, 12-31-04
FT Made: 10
Howard, 12-18-04
FT Attempts: 11
three times
Rebounds: 14
two times
Assists: 8
at Quinnipiac, 1-2-05
Steals: 5
vs. Northern Colorado, 3-5-04
Blocks: 3
at District of Columbia, 1-17-04
Minutes: 46
at Quinnipiac, 1-2-05

#22 Dana Smith

Points: 19
North Carolina A&T, 2-2-06
FG Made: 7
North Carolina A&T, 2-2-06
FG Attempts: 13
at Virginia, 2-15-06
3FG Made: 4
at Nebraska, 11-18-05
3FG Attempts: 5
North Carolina A&T, 2-2-06
FT Made: 4
five times
FT Attempts: 7
three times
Rebounds: 10
two times
Assists: 4
three times
Steals: 3
two times
Blocks: 3
High Point, 12-17-05
Minutes: 40
Hartford, 1-28-06

#30 Jon Larson

Points: 7
St. Andrews, 2-9-02
FG Made: 2
three times
FG Attempts: 5
two times
3FG Made: 0
3FG Attempts: 1
two times
FT Made: 3
two times
FT Attempts: 5
W-SSU, 2-19-04
Rebounds: 6
at Saint Paul's, 1-29-04
Assists: 1
seven times
Steals: 2
Apprentice School, 2-3-04
Blocks: 1
Appalachian State, 1-31-05
Minutes: 22
Southern Virginia, 2-14-04

#32 Husein Pistoljevic

Points: 27
Virginia Union, 2-5-04
FG Made: 9
Virginia Union, 2-5-04
FG Attempts: 19
Saint Paul's, 1-7-04
3FG Made: 9
Virginia Union, 2-5-04
3FG Attempts: 16
Virginia Union, 2-5-04
FT Made: 5
two times
FT Attempts: 8
at Mount Olive, 11-21-03
Rebounds: 9
at District of Columbia, 1-17-04
Assists: 4
two times
Steals: 4
two times
Blocks: 1
10 times
Minutes: 43
at Quinnipiac, 1-2-05

#42 Chad Kosmo

Points: 12
at #1 Illinois, 12-27-04
FG Made: 6
at #1 Illinois, 12-27-04
FG Attempts: 9
five times
3FG Made: 0
3FG Attempts: 0
FT Made: 3
two times
FT Attempts: 6
at Nebraska, 11-18-05
Rebounds: 11
Utah Valley State, 3-2-05
Assists: 3
four times
Steals: 1
eight times
Blocks: 5
two times
Minutes: 32
at James Madison, 2-21-05

#45 Maurice Sumter

Points: 29
vs. Northern Colorado, 3-5-04
FG Made: 12
two times
FG Attempts: 23
at Navy, 1-17-06
3FG Made: 5
at Winston-Salem St., 11-15-03
3FG Attempts: 8
at District of Columbia, 1-17-04
FT Made: 8
at Valparaiso, 1-7-06
FT Attempts: 8
five times
Rebounds: 12
Belmont Abbey, 12-31-03
Assists: 6
two times
Steals: 5
five times
Blocks: 4
Utah Valley State, 2-21-04
Minutes: 47
at Quinnipiac, 1-2-05

#50 Lamar Barrett

Points: 23
at Northern Colorado, 1-10-05
FG Made: 9
at Northern Colorado, 1-10-05
FG Attempts: 17
Quinnipiac, 11-27-05
3FG Made: 5
two times
3FG Attempts: 6
two times
FT Made: 7
South Carolina State, 1-29-05
FT Attempts: 7
two times
Rebounds: 11
at Quinnipiac, 1-2-05
Assists: 7
at Utah Valley State, 1-7-05
Steals: 4
Northern Colorado, 2-4-05
Blocks: 3
two times
Minutes: 38
Radford, 11-23-04

Active Roster Only
as of February 19, 2006

Longwood University Head Coach Mike Gillian

Longwood University named Mike Gillian as the seventh head coach in the history of men's basketball at the institution on May 2, 2003. Coach Gillian, in his third year during 2005-06, is charged with building an NCAA Division I program, and has been doing so from the ground up during his first two seasons while compiling a record of 6-52. The program begins this season with 11 scholarship players and four returning starters among 11 letterwinners on the 14-player roster.

Longwood finished 1-30 during 2004-05, year two of the University's *Division I Reclassification* and first year playing a full Division I schedule. The Lancers competed with nine scholarship players, no seniors, and 13 freshmen and sophomores on the 14-player roster. Longwood was 5-22 during 2003-04, year one of the transition while competing with seven scholarship players and only four returning letterwinners on the 14-player roster. That team was depleted even further at mid-season with the loss of the team's leading scorer.

Prior to his arrival at Longwood, Coach Gillian had been an assistant coach at George Mason University under head coach Jim Larranaga from 1997-2003. He had also worked under Larranaga for one season at Bowling Green State (Ohio) University (1996-97) before going to George Mason with Larranaga.

"Mike brings an excellent Division I background to our University," explained Director of Athletics Rick Mazzuto. "He has worked with an outstanding head coach in Jim Larranaga and is ready to move the Longwood program forward."

During Gillian's six seasons as an assistant coach at Mason, the Patriots went 100-74 overall with a 66-34 Colonial Athletic Association (CAA) record, winning two CAA Tournament championships (1999, 2001) and two CAA regular season titles (1999, 2000). George Mason also earned two NCAA Tournament appearances (1999, 2001) and made one National Invitation Tournament (NIT) appearance (2002). The Patriots were 57-18 overall at home in the Patriot Center, posting a 41-8 CAA homecourt record.

At Bowling Green, the Falcons finished 22-10 while winning the 1997 Mid-American Conference regular season title (13-5) and earning an NIT appearance.

"I'm very excited and would like to thank President Cormier (Dr. Patricia P. Cormier) and Rick Mazzuto for the opportunity to be the head basketball coach here at Longwood University," said Gillian. "It's been a long-time goal of mine to be a head coach, and to do so at the highest level. At Longwood, it's exciting to be leading a program through the transition to Division I status."

"The leadership and direction of the Division I transition plan at Longwood, as established by Dr. Cormier and Rick Mazzuto, is outstanding. Their unique insight and involvement has made being here a natural fit for me, and I look forward to the challenges ahead."

"I will certainly draw upon the experience of working with Jim Larranaga, and at George Mason University, to establish a successful Division I men's basketball tradition at Longwood."

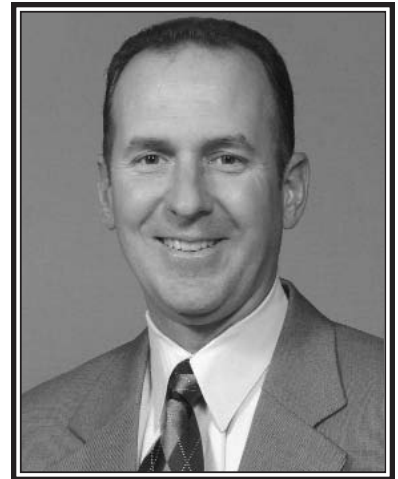
Prior to joining Larranaga at BGSU, Gillian was an assistant coach at Division II American International (Mass.) from 1989-95. During that six-year stint working for current Indiana Pacers assistant coach Jim Powell, the Yellow Jackets went 117-58 overall with a 75-33 Northeast-10 Conference (NE-10) record, winning both the NE-10 regular season and tournament championships in 1994 (26-6). American International also advanced to the second-round of the Division II Tournament that year.

Gillian was a member of the National Association of Basketball Coaches (NABC) "Assistant Coaches Committee" from 1999-2003. He was a YES Clinic speaker at the Division I Men's Final Four from 1998-2000, and has extensive public speaking experience through his involvement with numerous booster, local business and civic organizations, and charity

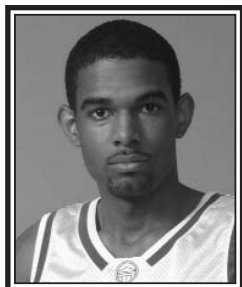
events.

Gillian was a four-year letterwinner as an undergraduate at Division III North Adams State (now the Massachusetts College of Liberal Arts), and served as a team captain during his final two years. He received a bachelor of science degree in business administration from North Adams State, and earned a master of business administration degree from American International.

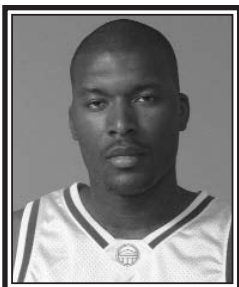
A native of Ayer, Massachusetts, Gillian (41) and his wife, Janet, have a four-year-old daughter, Emma.



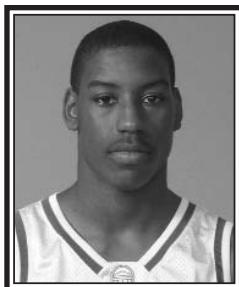
2005-06 Longwood University Photo Roster



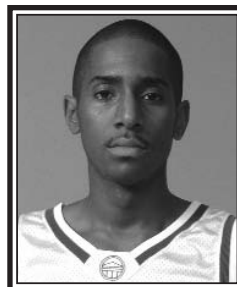
00 Darren Holmes
F, Jr., 6-6, 215
Virginia Beach, Va.



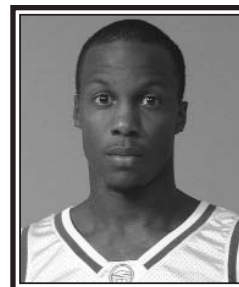
1 Clayton Morgan
F, Jr., 6-7, 230
Brooklyn, N.Y.



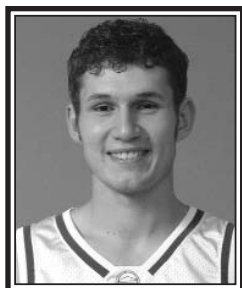
3 Kirk Williams
F, Fr., 6-6, 180
White Plains, N.Y.



10 Brandon Giles
G, So., 5-10, 150
Gaithersburg, Md.



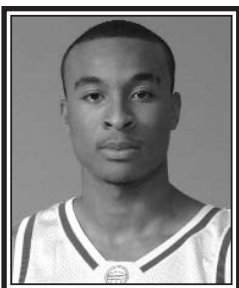
12 Bryan Butler
G, Fr., 6-0, 170
Woodbridge, Va.



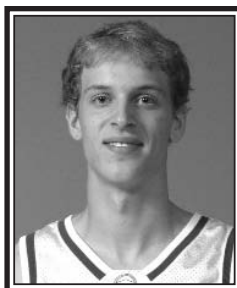
15 Joel Rowe
G, Jr., 6-1, 190
Colonial Heights, Va.



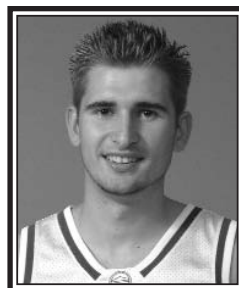
20 Michael Jefferson
G, Jr., 6-3, 200
Chesterfield, Va.



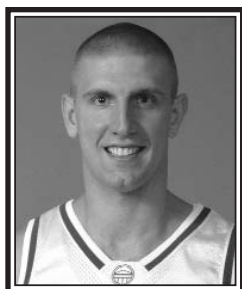
22 Dana Smith
G-F, So., 6-5, 225
Woodbridge, Va.



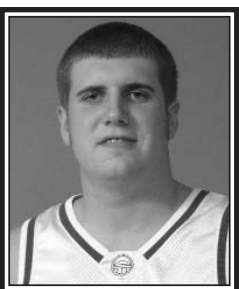
30 Jon Larson
F, R-Jr., 6-6, 190
Leesburg, Va.



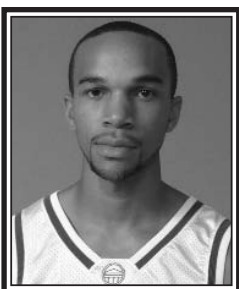
32 Husein Pistoljevic
G, Jr., 6-2, 185
Richland, Wash.



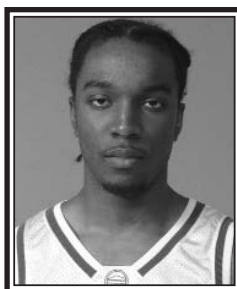
42 Chad Kosmo
C, Sr., 6-11, 260
Northport, Maine



44 Leland Beale
F-C, Jr., 6-8, 255
Poquoson, Va.



45 Maurice Sumter
G-F, Jr., 6-5, 180
Alexandria, Va.



50 Lamar Barrett
F, So., 6-6, 190
Providence, R.I.



Head Coach
Mike Gillian



Assistant Coach
Bill Reinson



Assistant Coach
Doug Thibault



Assistant Coach
Michael Huger

NCAA DIVISION I RECLASSIFICATION TIMELINE

Longwood University President **Dr. Patricia P. Cormier** informed the NCAA in a letter dated November 12, 2002 of Longwood's intention to reclassify its intercollegiate athletic program to Division I status. By doing so, the institution began an NCAA-mandated five-year process, including a one-year "exploratory period" (2002-03), to change its membership from Division II to Division I.

The decision to move to Division I is part of Longwood's overall strategic plan to raise the visibility and profile of the University. According to President Cormier, "We believe that Division I status will enhance both our institutional image and our recruitment efforts. And we think our student-athletes deserve to play at that level. We look forward to developing some great rivalries."

Those sentiments are shared by Longwood Director of Athletics **Rick Mazzuto** who stated, "One of the tremendous positives generated out of moving to Division I is the opportunity to use intercollegiate athletics as a vehicle to raise the public profile of the institution. The increased opportunities to play other high profile educational institutions, and to travel to major metropolitan areas where they are located, will greatly benefit Longwood -- in terms of more media interest and visibility."

2003-04 Reclassification Year One 20.5.2.2.2	2004-05 Reclassification Year Two 20.5.2.2.3	2005-06 Reclassification Year Three 20.5.2.2.4	2006-07 Reclassification Year Four 20.5.2.2.5
<p>(a) Compliance with all minimum contests and participation requirements for sports sponsorship as set forth in Bylaw 20.9.3.3.</p> <p>(b) Submit a strategic plan based on feedback from the previous plan.</p> <p>(c) Apply Division I legislation to the greatest extent possible.</p> <p>(d) Attendance at the NCAA Convention by required institutional representatives.</p> <p>(e) Attendance at an orientation session conducted by the national office by required institutional representatives related to the application Division I legislation and issues impacting Division I.</p> <p>(f) Submit an annual report and updated strategic plan by June 30 based on feedback from the previous year's annual report.</p>	<p>(a) Full compliance with all Division I legislation and membership requirements.</p> <p>(b) Attendance at the NCAA Convention by required institutional representatives.</p> <p>(c) Attendance at a meeting to be conducted at the NCAA Convention by required institutional representatives to discuss issues impacting Division I members.</p> <p>(d) Submit an annual report and updated strategic plan by June 30 based on feedback received from the previous year's annual report.</p>	<p>(a) Attendance at the NCAA Convention by required institutional representatives.</p> <p>(b) Attendance at a meeting to be conducted at the NCAA Convention by required institutional representatives to discuss issues impacting Division I members.</p> <p>(c) Completion of an NCAA athletics certification orientation visit.</p> <p>(d) Completion of a compliance review conducted by the national office and submission of a report with an institutional response to findings.</p> <p>(e) Submit an annual report and updated strategic plan by June 30 based on feedback received from the previous year's annual report.</p>	<p>(a) Successfully complete an NCAA athletics certification self-study and evaluation visit.</p> <p>(b) Attendance at the NCAA Convention by required institutional representatives.</p> <p>(c) Attendance at a meeting conducted at the NCAA Convention by required institutional representatives to discuss issues impacting Division I members.</p> <p>(d) Submit an annual report and updated strategic plan by June 30 based on feedback received from the previous year's annual report.</p>
			2007-08 First Year Of Division I 20.5.3
			<p>(a) Longwood shall comply with all NCAA championships eligibility requirements.</p> <p>(b) The Lancers shall be eligible for participation in NCAA championships.</p>

LONGWOOD UNIVERSITY BASKETBALL 2005-06 GAME-BY-GAME SUMMARIES

Game #1

Nebraska 80 - Longwood 65
November 18, 2005 • Lincoln, Neb.

Longwood University opened its 2005-06 campaign with an 80-65 loss at the University of Nebraska during the first game of the John Thompson Foundation Challenge in Lincoln, Nebraska. The Lancers were led by junior Maurice Sumter with a game-high 17 points, while the Cornhuskers had three players (Aleks Maric, Joe McCray, Jamel White) score 14 points each.

Longwood opened its season with a three-pointer by Sumter for the early 3-0 lead at 18:59, and led 5-3 after a jumper from freshman Bryan Butler 16-seconds later. Nebraska, of the Big 12 Conference, stormed back with seven unanswered points to lead 10-5 at 16:58, and extended its lead to 15-8 with 13:36 left in the first half. The Lancers, however, battled the bigger Cornhuskers and climbed to within 18-17 at 10:07 on a three-pointer from sophomore Dana Smith. The hosts again extended the advantage to 24-17 (5:40) before LU took advantage of a 12-2 run to lead 29-26 at 3:41, sparked by two treys from Butler and one each from Sumter and Smith. Nebraska, though, closed the half with a 15-3 run over the final 3:22 for a 41-32 lead at the intermission.

Longwood closed to within 43-35 early in the second half at 18:06, but Nebraska quickly built a 15-point lead at 52-37 with 16:19 remaining. The Lancers fought back to within 10 points at 58-48 on an alley-oop dunk by freshman Kirk Williams at 11:47, but the Huskers again extended their margin - this time to their largest lead of the game at 73-51 with 6:56 left to play. LU refused to quit, however, and played hard down the stretch with a 7-1 game-closing run for the final margin.

Sumter's game-high 17 points for Longwood included a trio of three-pointers, along with three rebounds. Butler finished with 15 points and four assists, including three treys as well, while Smith had 12 points on the strength of 4-4 shooting behind the arc. Williams added five points and a team-high six rebounds off the bench for the Lancers. LU shot 39.3% (24-61) from the field, including 43% (12-28) on three-pointers, and 50% (5-10) at the free throw line. Longwood did force 21 Nebraska turnovers.

Maric grabbed a game-high 10 rebounds to go along with his 14 points for Nebraska, while McCray scored 12 of his 14 points in the first half and White finished with 13 of his 14 points after the break. Jason Dourisseau added 13 points and nine boards as the Cornhuskers out-rebounded Longwood 45-32. Nebraska shot 50% (29-58) from the field, including 47% (7-15) on three-pointers, and 56% (15-27) at the line.

Game #2

Louisiana Tech 83 - Longwood 73
November 19, 2005 • Lincoln, Neb.

Longwood University dropped a hard-fought 83-73 decision to Louisiana Tech in Lincoln, Nebraska during day two of the John Thompson Foundation Challenge at the University of Nebraska. The Lancers were led by junior Michael Jefferson with 26 points, while the Bulldogs were led by Paul Millsap with game-highs of 27 points and 10 rebounds.

Longwood jumped ahead early as Jefferson connected on the first of his four three-point field goals for a 3-2 advantage at 18:57. A jumper by Jefferson pushed the lead to 9-6 at 17:03 before Louisiana Tech of the Western Athletic Conference scored seven unanswered points to lead 13-9 with 14:25 left in the first half. The Bulldogs led 18-13 (12:14) before a pair of baskets from junior Maurice Sumter pulled the Lancers within 18-17 at 10:45. La. Tech increased its margin to 10 points, leading 34-24 with 5:22 on the first-half clock on a bucket inside from Millsap who has led the nation in rebounding each of the last two seasons. LU, however, battled back and closed the half on an 11-5 run, including seven points from Jefferson, to pull within 39-35 at the intermission.

Longwood came out strong after the break and quickly tied the contest at 41-41 (18:34) before a questionable foul call turned into a three-point play by Louisiana Tech that sparked an 8-0 run resulting in a 49-41 advantage at 16:51. The Lancers never recovered and only managed to reduce the lead under 10 points three times over the final 13-plus minutes (55-48, 13:12; 60-51, 10:03; 73-64, 4:09). The Bulldogs took their largest lead of the game at 81-64 with 2:42 remaining before LU outscored them 9-2 down the stretch, including the final seven points from reserves against the La. Tech regulars.

Jefferson's team-high 26 points included 4-6 shooting behind the three-point arc while he added two assists, one block, and one steal for Longwood. Freshman Kirk Williams added 13 points, three rebounds, and two steals off the bench for the Lancers before fouling out late, while Sumter finished with 11 points, eight rebounds, and two assists. Sophomore Lamar Barrett had eight points, five rebounds, and four assists for LU. Longwood shot 50% (28-56) from the field, including 33% (6-18) on three-pointers, and 85% (11-13) at the free throw line.

Millsap's double-double of 27 points and 10 rebounds included 11-15 shooting from the floor along with four steals for Louisiana Tech. Jerome Richardson and Corey Dean each contributed 17 points for the Bulldogs. La. Tech shot 54% (29-54) from the field, including 30% (3-10) on three-pointers, and 67% (22-33) at the line - 79% (15-19) in the second half as they went to the line 20 more times than Longwood.

Game #3

Yale 70 - Longwood 67
November 20, 2005 • Lincoln, Neb.

Longwood University dropped a disappointing 70-67 decision to Yale in Lincoln, Nebraska in its final game of the John Thompson Foundation Challenge. The Lancers were playing their third game in 41 hours to open the season and were led by junior Maurice Sumter with 11 points, while the Bulldogs were led by Nick Holmes' game-high 19 points.

Longwood fell behind early against Yale as the Ivy League school scored the first six points of the game while leading 8-2 at the first media timeout (15:50). The Lancers battled back, however, tying the game at 10-10 (12:33) en route to taking a 21-11 advantage at 9:15 on a layup from freshman Bryan Butler that capped the 19-3 run. Yale fought back to within 27-26 at 3:58 before LU again increased its margin, this time leading 37-28 at 1:12 on a pair of free throws by Butler as the Lancers took a 39-33 lead at the intermission.

Longwood scored the opening basket of the second half as junior Michael Jefferson made a jumper just 10-seconds in for the 41-33 lead. Jefferson's three-pointer made the score 46-41 at 14:30 before Yale had a 7-2 run to tie the game at 48-48 (13:15). The Lancers led 53-49 on a three-pointer from sophomore Brandon Giles with 11:24 left, but the Bulldogs again tied the contest at 58-58 with 8:44 on the clock. Yale scored five unanswered points to lead 63-58 with 5:28 left before freshman Kirk Williams made back-to-back baskets inside to bring LU within 63-62 at 2:48. A three-pointer from Butler tied the game for the fourth time at 65-65 (1:56), but the Bulldogs again responded and took a 69-65 lead with 1:02 left to play. A pair of free throws from Jefferson made it 69-67 (0:55), and Longwood made a defensive stop but missed a potential game-tying jumper with 18-seconds remaining. Yale converted 1-2 free throws at 0:17 to lead 70-67. Unfortunately, the Lancers were not successful on a pair of potential game-tying three-point attempts in the final five-seconds.

Sumter added five assists, three steals, and two blocks to his team-high 11 points for Longwood. Butler finished with 10 points, four rebounds, and two steals, while Jefferson had nine points and three assists while limited to 23 minutes after earning three fouls in the first 2:22 of the game. Senior Chad Kosmo grabbed a team-high nine rebounds for the Lancers. Longwood shot 35% (23-65) from the field, including 28% (7-25) on three-pointers, and 61% (14-23) at the free throw line.

Holmes added eight rebounds to his game-high 19 points for Yale, while Sam Kaplan added 18 points. Yale shot 38% (23-61) from the field, including 20% (2-10) on three-pointers, and 69% (22-32) at the line. Longwood did force the Bulldogs into 20 turnovers in the contest.

LONGWOOD UNIVERSITY BASKETBALL 2005-06 GAME-BY-GAME SUMMARIES

Game #4

Longwood 93 - Virginia-Wise 49
November 26, 2005 • Farmville, Va.

Longwood University took a 93-49 victory past visiting Virginia-Wise in Willett Hall; stopping a 22-game losing streak dating back to last season (19). The Lancers were led by sophomore Dana Smith and junior Clayton Morgan with career-high efforts of 15 points and 13 points, respectively, while the Highland Cavaliers were led by Carlos Goodwyn with nine points.

Longwood started fast against NAIA UVA-Wise, leading 13-3 just 3:53 into the game as freshman Bryan Butler scored seven quick points. The lead was 22-8 at 12:04 as Morgan scored inside, and the Lancers increased their advantage to 36-15 with 4:58 remaining in the half behind a 14-7 run with junior Michael Jefferson finishing it with three-straight baskets. LU led 48-28 at the intermission as Smith added a couple of baskets, including a steal and dunk late in the half.

Longwood extended the margin in the second half against the outmanned visitors with a 17-2 run at the start to lead 65-30 with 14:14 on the clock, capped by back-to-back three-pointers from sophomore Brandon Giles and junior Husein Pistoljevic. The Lancers led 76-34 at 8:23, and 83-41 at 4:09 as Jefferson and sophomore Lamar Barrett each scored five points. Smith's three-pointer made it 90-46 with 1:56 left, the largest lead of the contest, and the final margin remained 44 points.

Longwood placed six players in double-figure scoring as Smith's career-high 15 points included a perfect 6-6 on field goals, including 1-1 on three-pointers, and 2-2 at the free throw line. He also grabbed a career-high nine rebounds, and had career-highs of three assists and three steals as well. Morgan added eight rebounds, equaling his career-high to go with his career-high 13 points for the Lancers. Butler finished with 12 points, three assists, and three steals; Jefferson had 11 points and three assists; while Barrett and Pistoljevic each contributed 10 points. Longwood shot 47% (38-81) from the field, including 31% (8-26) on three-pointers, and 60% (9-15) at the free throw line. The Lancers forced UVA-Wise into 21 turnovers in the contest, while committing just nine miscues, and out-rebounded the visitors 51-32.

In addition to Goodwyn's nine points for UVA-Wise, Parker Gemmell, Jarred Soles, and Zydrunas Rackauskas each contributed seven points for the Highland Cavaliers. The visitors shot 33% (16-49) from the field, including 27% (4-15) on three-pointers, and 68% (13-19) at the line.

Game #5

William and Mary 88 - Longwood 75
November 28, 2005 • Farmville, Va.

Longwood University dropped a disappointing 88-75 decision to visiting William and Mary in Willett Hall. The Lancers placed all five starters in double-figure scoring, led by junior Michael Jefferson with 16 points, while the Tribe were led by Corey Cofield with a game-high 21 points off the bench.

Longwood started fast against William and Mary of the Colonial Athletic Association, leading 10-4 just 2:48 into the game as Jefferson and freshman Bryan Butler each scored five quick points. The Tribe, however, went on a 22-1 run on the strength of 3-3 shooting on three-pointers to lead 26-11 at 11:10. The Lancers, though, battled back to within 31-27 with 3:53 left before the break behind their own 16-5 run as Jefferson again produced five points and Butler nailed a deep three-pointer. The visitors again took control down the stretch of the opening half, outscoring the hosts 10-0 over the final 2:38 to lead 41-27 at the intermission. Adam Payton sparked W&M in the first half with 14 points.

William and Mary maintained its momentum and extended the advantage to 58-39 at 14:38, the largest lead of the night on a pair of free throws from Cofield. Longwood, however, refused to quit and fought back once-again to within 59-46 with 12:47 remaining on a three-point play inside from junior Maurice Sumter. Another trey from Butler made the clock read 77-68 at 4:03, and the Lancers were within 81-73 with 2:07 left on another three-point play on the drive by Sumter (again). The Tribe secured the final margin with 4-4 free throws, the final two from Cofield, and a three-pointer over the final 1:48.

Jefferson added three steals to his team-high 16 points for Longwood, followed by Butler with 15 points (three treys) and three steals. Sophomore Lamar Barrett scored all 13 of his points in the second half, including eight of the team's first 10 points after the break, adding three assists. Sumter finished with 11 points, five rebounds, and three steals, while junior Clayton Morgan added 10 points and nine rebounds in his first start for the Lancers. LU shot 46% (29-63) from the field, including 28% (5-18) on three-pointers, and 67% (12-18) at the free throw line. The Lancers did force W&M into 19 turnovers for the contest, though were out-rebounded by the Tribe 44-28 -- 17 at the offensive end for the Williamsburg-based squad.

Cofield added seven rebounds to his game-high 21 points for William and Mary, while Payton and Laimis Kisielius each contributed 19 points to the Tribe effort. W&M shot 48% (29-60) from the field, including 44% (7-16) on three-pointers, and 79% (23-29) at the line -- the difference in the contest as three Lancers fouled out.

Game #6

Longwood 88 - Liberty 75
November 30, 2005 • Farmville, Va.

Longwood University won its first Division I game in nearly a year, defeating Liberty University 88-75 in Willett Hall. The Lancers placed five players in double-figure scoring, led by junior Michael Jefferson with a game-high 22 points, while the Flames were led by Larry Blair with 16 points. It was Longwood's first win over a Division I opponent since last year's victory over Howard (Dec. 18, 75-69), and also the Lancers' 15th win over Liberty in 20 overall meetings; though the first contest between the two schools since February 8, 1988.

Longwood started fast against Liberty and led 17-8 at 13:14 on a jumper from Jefferson who scored 12 of his 22 points in the first half. The Flames narrowed the margin to 19-14 at 10:51 on a layup from Russell Monroe, but the Lancers went on a 13-0 run to take control with 4:20 left before halftime as four different players scored during the outburst. The hosts extended the margin to 42-21 late in the half en route to a comfortable 44-25 lead at the intermission in front of a raucous and delighted crowd of 1,430. Monroe had 10 points at the break for the visitors.

Longwood continued its momentum in the second half, widening the advantage to 54-29 at 16:28 on a jumper from freshman Bryan Butler. The Lancers maintained their 20-plus point margin until less than six minutes remained as juniors Maurice Sumter and Clayton Morgan, along with freshman Kirk Williams each contributed key baskets. The Flames were able to mount a late rally after Blair left the game with an injury at 7:08 and Longwood leading 72-49, though Liberty got no closer than the final margin of 13 points. Jefferson made 6-6 free throws over the final 2:05 to secure the outcome for the Lancers.

Jefferson added six rebounds, five assists, and three steals to his game-high 22 points for Longwood. Williams finished with a career-high 17 points off the bench for the Lancers, while Butler matched his career-high of 15 points, adding five steals and three assists. Sumter also had 15 points, adding nine rebounds, while Morgan contributed 12 points and seven rebounds. Longwood shot 48% (29-60) from the field, including 43% (3-7) on three-pointers, and 77% (27-35) at the free throw line. The Lancers forced Liberty into 21 turnovers for the contest, and out-rebounded the Flames 34-28.

In addition to Blair with 16 points for Liberty, Eric Bigby added 13 points, Evan Risher had 12 points, and Monroe finished with 10 points. The Flames shot 53% (31-58) from the field, including 59% (20-34) in the second half, was 29% (4-14) on three-pointers, and 69% (9-13) at the line.

LONGWOOD UNIVERSITY BASKETBALL 2005-06 GAME-BY-GAME SUMMARIES

Game #7

UMKC 79 - Longwood 69
December 3, 2005 • Kansas City, Mo.

Longwood University dropped a hard-fought yet disappointing 79-69 road decision at UMKC in storied Municipal Auditorium in Kansas City, Missouri. The Lancers were led by junior Michael Jefferson with 17 points, while the Kangaroos were led by Dee Ayuba and Quinton Day with 21 points each.

Longwood battled UMKC throughout in a closely-played contest that witnessed 11 lead-changes and nine ties. The Lancers got on the scoreboard first as Jefferson nailed a three-pointer at 19:47, and led 9-2 just 2:41 into the game on a jumper from Jefferson that followed two offensive rebound baskets from junior Clayton Morgan. The Kangaroos rallied back to tie the game at 9-9 (15:44) en route to leading 19-13 at 9:20 with a 17-4 run.

Longwood came right back, though, and tied the game at 21-21 with 8:08 left before halftime on consecutive three-pointers from Jefferson and junior Husein Pistoljevic. The hosts again forged in front, leading 34-28 at 2:30 with a 13-7 run. The visitors, however, finished the period strong with an 8-0 run over the final 2:17 to lead 36-34 at the intermission. Morgan had 13 points and nine rebounds at the break for the Lancers.

The second half began with five lead-changes in the first 2:32 as sophomore Lamar Barrett completed an old-fashioned three-point play to give Longwood a 44-42 lead at 17:28. UMKC took advantage of a 14-2 run to open its first double-digit lead at 56-46 with 13:50 remaining as Day scored five quick points. The Lancers refused to quit and again battled back with their own 13-2 run to go back ahead 59-58 at 11:23 on a layup from Jefferson. He had began the run with another three-pointer, while freshman Kirk Williams added four points. Williams added a pair of free throws at 9:26 that provided for what would be the last lead of the night for the visitors at 61-60.

Unfortunately, Longwood would go the next 6:05 without scoring as UMKC answered with 12 unanswered points to lead 72-61 as Ayuba tallied seven points that included a run-closing three-pointer. The Lancers closed to within 74-65 at 2:39 on a tip-in from Williams but LU could get no closer than the final margin.

Jefferson's team-high 17 points for Longwood included a trio of three-pointers, while Morgan finished with his first career double-double of 13 points and a game and career-high 16 rebounds. Morgan had 10 offensive rebounds, one more than the UMKC team totaled. Williams and junior Maurice Sumter each added 10 points for the Lancers, and Williams also grabbed seven rebounds off the bench. LU shot 35% (23-66) from the field, including 24% (6-25) on three-pointers, and 81% (17-21) at the free throw line. The Lancers did out-rebound the taller hosts 40-37.

Day added eight assists and five steals to his 21 points for UMKC, though he also had eight turnovers. Ayuba added nine rebounds to his 21-point effort for the Kangaroos, while Tim Blackwell contributed 18 points and seven assists, scoring 14 points in the second half. UMKC shot 55% (32-58) from the field, including 36% (5-14) on three-pointers, and 59% (10-17) at the line.

Game #8

Kansas State 89 - Longwood 60
December 5, 2005 • Manhattan, Kan.

Longwood University put a scare into Kansas State University of the Big 12 Conference for a half before falling 89-60 at Bramlage Coliseum in Manhattan, Kansas. The Lancers led for much of the opening half against the Wildcats who only had a 36-35 advantage at the intermission. Junior Michael Jefferson led LU with 16 points while surpassing 1,000 career points (1,005), and Lance Harris led KSU with a game-high 26 points.

At Kansas State, a team that was ranked #1 in one College RPI ratings service before a 58-57 loss at Washington State last Saturday (Dec. 3), Longwood took an early 3-2 lead on a three-pointer from freshman Bryan Butler at 17:30. Another three-pointer, this time from Jefferson, pushed the Lancers ahead 10-7 just 6:43 into the game. A Harris trey tied it at 10-10 before an 11-2 run gave LU its largest lead of the night at 21-12 with 11:03 left in the opening half. Butler nailed two three-pointers during the quick out-burst, while Jefferson also made another triple along with a jumper. The run by the visitors forced Wildcat head coach Jim Wooldridge to call not one, but two timeouts during the 1:31 span.

Longwood still led 26-19 at 7:27 on a layup from junior Clayton Morgan. Kansas State, however, fought back with a 9-2 run to tie the game at 28-28 with 4:14 left before halftime as Cartier Martin scored five points. A key play took place on the next Lancer possession as junior Maurice Sumter looked to score on an offensive rebound basket inside that appeared to be goaltending on the Wildcats. It was not called, however, and the blocked shot resulted in a K-State dunk at the other end of the floor and a 30-28 lead at 3:50 – the first lead for the hosts since leading 4-3 at 17:22. The visitors did close the half with four free throws to trail just 36-35 at the break as the small crowd of 4,553 was as stunned as the Wildcats.

Kansas State came out in the second half and finally took advantage of its bigger, stronger, and deeper lineup against a Longwood team that simply ran out of steam. The Wildcats outscored the Lancers 22-2 to lead 58-37 at 9:58, and the hosts never looked back against the worn-out guests.

Jefferson was 4-6 on three-pointers while scoring his team-high 16 points to lead Longwood, becoming only the 14th 1,000-point career scorer in the program's history. Butler finished with nine points on 3-4 shooting behind the arc, though all of his points came in the first half. Morgan just missed his second double-double in as many games, finishing with eight points and a team-high nine rebounds. LU shot 33% (21-64) from the field, including 43% (9-21) on three-pointers, and 53% (9-17) at the free throw line.

Harris was 4-8 on three-pointers while scoring his game-high 26 points for Kansas State, adding five assists. Martin finished with 13 points and eight rebounds, below his averages of 22 points and nine rebounds for the Wildcats. KSU shot 48% (35-73) from the field, though 58% (19-33) in the second half, adding 50% (6-12) on three-pointers, and 81% (13-16) at the line.

Game #9

#4 Villanova 90 - Longwood 77
December 10, 2005 • Atlantic City, N.J.

Longwood University battled the nation's fourth-ranked team for 40 minutes while falling 90-77 to #4 Villanova University in Atlantic City, New Jersey at historic Boardwalk Hall. The Lancers were led by junior Michael Jefferson with 19 points, while the unbeaten Wildcats were led by Randy Foye with a game-high 27 points, including 22 points in the second half.

Playing the first game in Boardwalk Hall in nine years, Villanova of the Big East Conference led 3-0 when Mike Nardi made a three-pointer just 16-seconds into the contest. Longwood tied it at 3-3 on a free throw from junior Clayton Morgan followed by a tip-in from classmate Maurice Sumter at 18:33. The nationally-ranked Wildcats, however, scored the next 12 unanswered points to lead 15-3 with 14:55 left before halftime. The Lancers fought back, though, getting a jumper from Jefferson and an old-fashioned three-point play inside from freshman Kirk Williams to trail 15-8 at 13:15.

Villanova stretched the margin back to 10 points again, leading 22-12 with 9:43 left until the intermission. Longwood would again retaliate, cutting the advantage to 26-21 at 7:45 as sophomore Dana Smith nailed back-to-back three-point field goals. The Lancers were within four points, 29-25, after a layup from Williams at 5:32. The Wildcats finally took control of the opening half with a 15-7 run to lead 44-32 at halftime, though Jefferson made a late three-pointer.

Longwood was within 10 points early in the second half at 44-34 following a pair of free throws from Morgan, and trailed 50-38 at 15:55 after a layup from Jefferson. Villanova once again gained momentum and opened a 62-44 lead with 12:21 remaining as Foye tallied seven quick points, including 5-6 free throws during the stretch. Four of the free throws came courtesy two technical fouls against the Lancers, one following a monstrous alley-oop dunk by Williams (12:58) and the other against the LU bench (12:21).

Villanova, who entered the game with a 27.8-point margin of victory this season, took its one and only 20-point lead of the contest at 5:27 as Foye made back-to-back baskets along with another free throw. Longwood was able to reduce the margin again as Jefferson made four free throws in the final 1:48 in addition to a basket from Williams and a late three-pointer from junior Husein Pistoljevic. The Wildcats of head coach Jay Wright did not empty the bench until 1:48 was left.

Jefferson added four assists, three rebounds, two blocks, and a steal to his team-high 19 points for Longwood. Sumter finished with 17 points and eight rebounds, adding two blocks and two steals, while Morgan contributed 12 points and eight rebounds. Williams had nine points and six rebounds off the bench for the Lancers. Longwood shot 44% (27-61) from the field, including 50% (6-12) on three-pointers, and 77% (17-22) at the free throw line. The Lancers did out-rebound the Wildcats 44-35, but had a season-high 19 turnovers that led to 15 VU points.

As mentioned, Foye scored 22 of his game-high 27 points in the second half, including 17 points during the first 7:40 of the final 20 minutes for Villanova. He added four assists, three rebounds, and two steals. Allan Ray added 20 points for the Wildcats, while Will Sheridan finished with 13 points and eight rebounds, though he only scored two points after the intermission. Villanova shot 48% (32-67) from the field, including 56% (15-27) in the second half, 47% (9-19) on three-pointers, and just 55% (17-31) at the line.

LONGWOOD UNIVERSITY BASKETBALL

2005-06 GAME-BY-GAME SUMMARIES

Game #10

High Point 88 - Longwood 72
December 17, 2005 • Farmville, Va.

Longwood University dropped an 88-72 decision to visiting High Point University of the Big South Conference in Willett Hall. The Lancers were led by junior Michael Jefferson with 18 points while the Panthers won their third-straight game as Issa Konare posted a career-best double-double of 23 points and 10 rebounds, and Arizona Reid added 22 points.

Longwood led early at 12-10 with 12:57 left in the opening half after three ties and a couple of lead-changes. High Point, however, took advantage of torrid first-half shooting and a 22-4 run to lead 32-16 at 8:02. Reid scored eight points during the outburst, and Konare added seven points. The Panthers would extend the margin to 21 points at the intermission, leading 50-29 while shooting 62% (21-34) from the field during the first 20 minutes. Reid had 16 points at halftime, and Konare had 15 points as the duo combined to shoot 13-15 from the floor.

High Point maintained the margin at 54-33 early in the second half on a jumper from Reid at 19:01. Longwood battled back, though, with a 13-5 run to pull to within 59-46 at 13:08 as Jefferson scored six points. A layup from junior Clayton Morgan with 12:04 left kept the Lancers within 61-48. The Panthers, however, would get rolling again and outscored the hosts 17-3 behind five points from Konare and seven points from Akeem Scott over the next 5:49 to lead 78-51 at 6:15. LU had one more run left and narrowed the margin to 84-70 at 1:43 with a 19-6 outburst as junior Husein Pistoljevic tallied nine points off the bench, but it was too late.

Jefferson led Longwood with his team-high 18 points, while sophomore Lamar Barrett added 14 points on 6-8 from the floor. Morgan finished with eight points and a game-high 15 rebounds, and Pistoljevic had nine points in only 11 minutes for the Lancers. LU shot 39% (26-66) from the field, including just 17% (2-12) on three-pointers, and 86% (18-21) at the free throw line. The Lancers did force HPU into 18 turnovers for the contest, and also out-rebounded the visitors 39-28.

Konare led High Point with his career-best double-double of 23 points and 10 rebounds, making 8-9 shots from the floor and 6-7 at the line, adding a career-high four blocks as well. Reid finished with 22 points on 10-14 shooting from the floor, while Mike Jefferson came off the bench to add 13 points and six assists, and Scott finished with 12 points. HPU shot 57% (32-56) from the field, including 55% (6-11) on three-pointers, and 78% (18-23) at the line.

Game #11

Valparaiso 82 - Longwood 79
December 20, 2005 • Farmville, Va.

Longwood University dropped a heartbreaking 82-79 decision to visiting Valparaiso University of the Mid-Continent Conference in Willett Hall. The Lancers missed a potential game-tying three-pointer in the final seconds after battling back from a 45-36 halftime deficit; led by juniors Clayton Morgan and Maurice Sumter with 25 points each, a career-high for Morgan and a season-high for Sumter. The Crusaders (5-3) were led by Ron Howard with 20 points, while Dan Oppland added 19 points.

In a hard-fought and closely-contested game throughout, Longwood and Valparaiso played to 10 lead-changes and seven ties over the 40 minutes. The Lancers led 4-2 at 18:48 on a dunk from junior Michael Jefferson before the Crusaders took advantage of a 15-6 run behind eight points from Howard to lead 17-10 at 14:36. LU closed to within 22-19 at 12:18 as Sumter made a pair of free throws, and was within 27-21 at 9:43 on a layup from sophomore Lamar Barrett. Valpo, however, went on a quick 8-1 run sparked by consecutive three-pointers from Seth Colclasure to take their largest lead of the night at 35-22 with 7:15 left in the first half. Longwood again battled back, though, and was within 37-29 at 4:28 on a basket inside from Morgan, and the Lancers trailed just 42-34 at 2:01 on an old fashioned three-point play from Morgan. After a three-pointer from Oppland, Morgan made a pair of free throws to provide for the 45-36 Valparaiso lead at the intermission.

Jefferson, LU's leading scorer (15.6), went down during the first minute of the second half with an ankle injury and did not return. Longwood refused to let the injury affect them, scoring the first 10 points of the second half to lead 46-45 at 16:37 as Sumter tallied six points and Morgan had four points. A layup from Oppland put Valparaiso back ahead 52-50 at 13:45 before the Lancers once-again forged in front with a 12-2 run as sophomore Dana Smith scored 10 points for a 62-54 lead at 10:54. A layup from freshman Kirk Williams gave LU its largest lead at 66-57 with 9:52 left. Valpo ran off 10 unanswered points to lead 67-66 at 6:53 and it was back-and-forth down the stretch.

A layup from Morgan tied the game at 70-70 (5:13), and a three-pointer from Sumter tied it again at 73-73 (3:39). Ali Berdici put Valparaiso ahead for good at 75-73 with a pair of free throws at 3:31, and a Howard layup put the Crusaders ahead 78-74 at 2:07. Longwood was within 78-77 with 40-seconds left on a layup from Barrett who had made 1-2 free throws at 1:38. A jumper from Shawn Huff with 29-seconds remaining made it 80-77 before Morgan made a pair of free throws at 0:22 to pull the Lancers within 80-79. Huff added two free throws with 11-seconds left for his only four points of the game and the final margin as LU missed its potential game-tying three-pointer at the end.

Morgan added a game-high 13 rebounds to his career-high 25 points for his second career double-double, adding a career-best five assists for Longwood. Sumter added seven rebounds and five assists to his season-high of 25 points for the Lancers, while Smith finished with 11 points, all scored in the second half. LU shot 43% (30-70) from the field, including just 14% (2-14) on three-pointers, and 85% (17-20) at the free throw line. The Lancers did force Valpo into 21 turnovers for the contest, and the two teams tied in rebounding at 37-37.

In addition to Howard (20) and Oppland (19), Colclasure added 14 points while Mohamed Kone had 12 rebounds and four blocks. Valparaiso shot 50% (29-58) from the field, including 43% (9-21) on three-pointers, and 68% (15-22) at the line.

Game #12

VCU 91 - Longwood 80
December 22, 2005 • Richmond, Va.

Longwood University dropped a 91-80 road decision at VCU in Richmond at the Alltel Pavilion at Stuart C. Siegel Center. The Lancers were led by freshman Bryan Butler with a career-high 19 points off the bench. The Rams were led by B.A. Walker with a game-high 22 points.

At VCU, Longwood fell behind 15-0 at the start as the Rams made three, three-pointers, including two from Walker who added a dunk to finished the quick beginning at 15:24. The Lancers scored their first points at 15:10 on a three-pointer from Butler who added another trey following a layup from sophomore Dana Smith to narrow the lead to 17-8 at 14:18. VCU led 31-20 at 8:18 before an 11-2 run by Longwood made it a two-point game at 33-31 with 6:08 left before halftime. Smith scored seven points during the run, including an old-fashioned three-point play. The Rams, however, closed the period with an 18-8 run to lead 51-39 at the intermission as Alexander Harper finished the opening half with 14 points, and Walker had 11 points.

VCU expanded the margin in the second half, taking its largest lead at 66-46 with 15:41 remaining. Longwood would not go away, though, outscoring the Rams 29-19 to climb back to within 10 points at 85-75 with 3:04 on the clock. Butler nailed a couple of long three-pointers along with a pair of free throws, while Smith added seven more points, and freshman Kirk Williams scored six points. The hosts secured the final margin with a layup and 4-6 free throws over the final 3:00.

Butler's career-high of 19 points included 5-9 three-pointers while playing just 21 minutes off the bench for Longwood. Williams matched his career-high with 17 points, adding seven rebounds while playing 25 minutes off the bench for the Lancers. Smith also had a career-high with 16 points, adding six rebounds while making his first start of the season, and junior Maurice Sumter contributed 15 points. LU shot 44% (28-63) from the field, including 47% (8-17) on three-pointers, and 64% (16-25) at the free throw line. The Lancers did out-rebound the Rams 42-30.

Walker led VCU with his game-high 22 points, followed by Nick George with 18 points. Jamal Shuler added 17 points off the bench, while Harper finished with 16 points, and Eric Davis added 10 points. VCU shot 50% (31-62) from the field, including 33% (9-27) on three-pointers, and 83% (20-24) at the line.

Longwood played without its leading scorer, junior Michael Jefferson (14.5), who did not play after an ankle injury suffered against Valparaiso (Dec. 20).

LONGWOOD UNIVERSITY BASKETBALL 2005-06 GAME-BY-GAME SUMMARIES

Game #13

College of Charleston 77 - Longwood 53
December 29, 2005 • Charleston, S.C.

Longwood University dropped a 77-53 decision to home standing College of Charleston in the first-round of the Cougar's Holiday Classic tournament played at the John Kresse Arena in Charleston, South Carolina. The Lancers had no players reach double-figure scoring, while the Cougars were led by Dontaye Draper and Josh Jackson with 15 points each.

In a game that started slowly for each team, Longwood led 11-9 at 12:43 of the first half on a tip-in from sophomore Dana Smith. The College of Charleston, however, took advantage of a 14-2 run to lead 23-13 with 8:19 left until the break. Draper's seven points fueled the Cougar run, while Jackson added four points. The Lancers, though, battled back to within 23-17 (6:34) on consecutive baskets inside from senior Chad Kosmo and freshman Kirk Williams. It was still a six-point game, 33-27, at 2:31 on a three-point field goal from junior Maurice Sumter but the hosts led 39-29 at the intermission as Draper made a late jumper to finish the opening period with 13 points.

CoC took control of the game during the opening minutes of the second half, outscoring Longwood 11-3 over the first 2:38 to lead 50-32 at 17:22 as Jackson tallied a pair of baskets. The Lancers closed to within 54-38 at 13:52 on a layup from junior Clayton Morgan but that was as close as it would get. The Cougars increased the margin to as many as 28 points (75-47, 3:54) before LU scored six of the final eight points for the final margin.

Kosmo led Longwood with eight points and a game-high 10 rebounds while playing only 14 minutes. He was making his first start since Nov. 26 when he suffered an ankle injury against UVA-Wise, and seeing his first significant action as well after missing seven of the last eight games. Williams also finished with eight points off the bench for the Lancers before fouling out with 5:22 remaining. Sumter contributed seven points, four rebounds, and three assists. LU shot just 30% (23-77) from the field, including 19% (4-21) on three-pointers, and only 25% (3-12) at the free throw line.

Draper and Jackson each scored 15 points to lead the College of Charleston, with Jackson adding 10 rebounds for a double-double. Jermaine Johnson also had a double-double of 13 points and 10 rebounds, while Drew Hall added 10 points and Philip McCandies contributed 10 rebounds for the Cougars. CoC shot 42% (30-71) from the field, including 21% (4-19) on three-pointers, and 59% (13-22) at the line.

The College of Charleston improved to 22-1 in its own tournament, and is now 314-34 overall at home in John Kresse Arena.

Game #14

Longwood 86 - Long Island 69
December 30, 2005 • Charleston, S.C.

Longwood University took an 86-69 victory past Long Island University during the consolation game of the College of Charleston Holiday Classic, halting a seven-game losing streak with the convincing triumph in South Carolina. The Lancers were led by junior Clayton Morgan with a game-high double-double of 16 points and 16 rebounds, while the Blackbirds were led by Evan Meekins and James Williams with 15 points each.

"Our team has demonstrated fantastic traits such as determination, tenacity, perseverance, and resiliency during a part of the schedule that was purposely created to test us," explained third-year head coach Mike Gillian. "As a result, we're prepared to capitalize on opportunities to win games like tonight's."

Against Long Island, Longwood fell behind 5-0 early at 18:19 as Meekins scored five quick points. The Lancers, however, would outscore the Blackbirds 18-5 to lead 18-10 at 12:11 as sophomore Dana Smith scored five points and Morgan tallied four points. LIU fought back to tie the game at 21-21 with 8:08 left until the break before LU took control of the contest. The Lancers opened a 13-point advantage with a 19-6 run sparked by six points each from freshmen Bryan Butler and Kirk Williams to lead 40-27 at 3:12. LU maintained its advantage and led 47-37 at the intermission as Butler came off the bench to score 11 first-half points, including 3-3 on three-point field goals.

Longwood continued with its momentum in the second half, leading 59-44 at 14:14 on a layup from Williams that followed six points from junior Maurice Sumter. The Lancers again maintained their advantage as the lead never dropped below 10 points over the final 15:58 (68-58, 5:39) as Sumter tallied 12 points and Morgan scored eight points. An 11-2 run gave LU its largest lead of the contest at 79-60 with 2:35 remaining on a free throw from Smith, insuring the team's third victory this season.

Morgan's game-high totals of 16 points and 16 rebounds was his third double-double of the season for Longwood. Sumter and Butler each finished with 15 points for the Lancers as Sumter added six rebounds and five assists, while Smith contributed 13 points, six rebounds and four assists. Williams added 10 points to the winning effort. LU shot 54% (34-63) from the field, including 46% (6-13) on three-pointers, and 67% (12-18) at the free throw line. The Lancers out-rebounded LIU 42-38, and forced 21 turnovers.

Meekins and Williams each scored 15 points for Long Island, while Paska Morkeliunas added 11 points for the Blackbirds. LIU shot 30% (17-57) from the field, including 27% (6-22) on three-pointers, and 76% (29-38) at the line, which allowed them to remain in the game.

It was the first-ever meeting between Longwood and Long Island in men's basketball.

Game #15

Richmond 74 - Longwood 60
January 2, 2006 • Richmond, Va.

Longwood University dropped a 74-60 decision at the University of Richmond at the Robins Center. Junior captain Maurice Sumter led the Lancers with 16 points, while the Spiders got 17 points each from seniors Jermaine Bucknor and Kevin Steenberge.

Longwood took its only lead of the game at 2-1 (16:58) on a jumper from sophomore Dana Smith. Richmond took advantage of a 19-8 run to lead 20-10 at 9:59, and the Spiders expanded their lead to 14 points at 28-14 with 4:49 left in the first half as Steenberge scored six points. The Lancers battled back, though, with a 15-7 run and closed to within 35-29 at the intermission as freshman Bryan Butler scored five points, including a buzzer-beating three-point field goal to end the half.

Richmond took control of the contest with four consecutive three-pointers to open the second half as Bucknor and redshirt-freshman Jarhon Giddings made two triples each over the first 3:17 for a 47-34 lead at 16:43. The Spiders largest lead of the game was 74-57 at 2:02 as Longwood was only able to climb within 10 points on two occasions in the second half (55-45, 10:14; 65-55, 4:15). Richmond shot the ball extremely well in each half, hitting 57% (16-28) in the first half and 58% (14-24) in the second period.

Sumter added five rebounds, two assists, and two steals to his team-high 16 points for Longwood. Butler finished with 13 points and four assists while playing 21 minutes off the bench, and Smith had 11 points and six rebounds. LU shot 39% (23-59) from the field, including 37% (7-19) on three-pointers, and 70% (7-10) at the free throw line.

Steenberge added six rebounds and two blocks to his 17 points for Richmond, while Bucknor was 3-5 beyond the arc among his 17 points. Junior Peter Thomas added 11 points for the Spiders. UR shot 58% (30-52) from the field, including 54% (7-13) on three-pointers, and 64% (7-11) at the line.

It was the first-ever meeting between Longwood and Richmond in men's basketball. The tradition-rich Spider program has made seven post-season NCAA Tournament appearances, as well as seven NIT post-season appearances -- all since 1982.

Longwood played without its leading scorer, junior Michael Jefferson (12.8), out with an ankle injury.

LONGWOOD UNIVERSITY BASKETBALL 2005-06 GAME-BY-GAME SUMMARIES

Game #16

IPFW 92 - Longwood 90 (OT)
January 5, 2006 • Fort Wayne, Ind.

Longwood University dropped a hard-fought 92-90 overtime decision at IPFW at the Allen County War Memorial Coliseum in Fort Wayne, Indiana. The Lancers were led by junior Michael Jefferson with 21 points, while the Mastodons got a career-high 35 points from Tyler Best.

The closely-played contest featured 10 lead-changes and nine ties during the 45 minutes of hard competition. Longwood took control early with the first basket of the game by junior Maurice Sumter, a three-point field goal for an early 3-0 lead. The Lancers led 17-9 at 13:51 on another three-pointer from sophomore Lamar Barrett. LU increased its margin to double-digits at 27-17 with 10:45 left in the first half on a basket from Jefferson. A triple from freshman Bryan Butler had the visitors ahead 38-31 at 4:54, and Longwood led 43-42 at the intermission as sophomore Dana Smith made a late first-half layup. IPFW was able to stay in the contest behind 23 first-half points from Best.

Another layup, this time from Sumter, gave Longwood a 53-48 advantage at 16:16 of the second half. The Lancers maintained the advantage, leading 73-67 with 9:21 remaining on an old-fashioned three-point play from junior Clayton Morgan. IPFW, however, used a 9-0 run to take a 76-73 lead at 5:48 as Quintin Carouthers scored six quick points. A Jefferson three-pointer tied the game at 76-76 (4:59), but Justin Hawkins answered with a three to give the Mastodons a 79-76 lead (4:35). A pair of free throws from Carouthers made it 81-78 at 2:32, but a free throw from Sumter (2:07) and a layup from Morgan (1:23) made it 81-81. IPFW missed a three-pointer with 45-seconds remaining, and Barrett had a chance to win it for LU but missed a 12-foot baseline jumper on the left-side at two-seconds to send the game to OT.

IPFW led during the first 2:36 of the extra period before Longwood regained the lead at 87-86 with 2:24 left on a jumper from Barrett. The Mastodons came right back, though, to lead 88-87 at 1:37 on a layup from Best, and went ahead 92-87 with 21-seconds remaining on consecutive baskets from Carouthers. A Barrett three-pointer made it 92-90 at 13-seconds, and after forcing a turnover, the Lancers had possession with an opportunity to tie or win the game but committed their own miscue to allow the hosts to escape with the homecourt victory.

Jefferson finished with 21 points to lead Longwood, playing 37 minutes on a pair of sore ankles after playing just 32 minutes in the previous two games combined while missing two games as well. Barrett had a season-high 16 points for the Lancers, adding season-highs of seven rebounds and five assists. Sumter and Morgan each contributed 13 points, with Sumter adding five assists and Morgan grabbing seven rebounds. Butler had 12 points of 4-6 shooting beyond the arc, while Smith finished with 10 points on perfect shooting from the floor (4-4 field goals, 2-2 three-pointers) in 17 minutes. LU shot 54% (36-67) from the field, including 55% (11-20) on three-pointers, and 58% (7-12) at the free throw line.

Best finished with a career-high of 35 points for IPFW, adding nine rebounds and four blocks while making 14-21 shots from the field. Scott DeWitt added 23 points and seven rebounds, making 7-8 from the field, including 4-4 on three-pointers, and Carouthers added 16 points and seven rebounds for the Mastodons. IPFW shot 53% (33-62) from the field, including 39% (7-18) on three-pointers, and 63% (19-30) at the line.

Game #17

Valparaiso 105 - Longwood 73
January 7, 2006 • Valparaiso, Ind.

Longwood University dropped a 105-73 decision at Valparaiso University in Indiana. Junior Maurice Sumter led the Lancers with 17 points, while Don Oppland led six double-figure scorers for the Crusaders with a game-high 19 points.

Playing its fifth road game in 10 days, Longwood scored first, leading 2-0 on a layup from junior Clayton Morgan just 15-seconds into the contest. Valpo quickly responded and took an 11-4 advantage at 16:43 on a layup from Oppland who scored all of his points in the first half. The Lancers fought back to within 13-11 on a pair of free throws from Sumter with 15:23 left in the opening period. The Crusaders again extended their margin, this time to double-digits, leading 28-17 at 10:21 on a jumper from Oppland. LU closed to within 39-31 at 4:56 on an old-fashioned three-point play from sophomore Brandon Giles who kept the visitors close with 13 first-half points. Sumter also had 13 points at the intermission as Longwood trailed 56-45 at halftime.

Valparaiso, which had escaped with an 82-79 win at Longwood last month (Dec. 20), took control of the game with a 20-5 run to start the second half. The Crusaders led 76-50 with 14:26 remaining as Jarryd Loyd scored nine quick points, including a pair of three-point field goals. Valpo led by as many as 37 points late in the game (97-60, 5:20), securing the outcome with 63% (15-24) shooting from the field in the second half along with making 30-40 free throws during the contest.

Sumter finished with 17 points and four assists for Longwood, making 8-8 free throws, while Giles equaled his career-high with 13 points in just 16 minutes. Giles only played six minutes in the second half after suffering an ankle injury late in the first half. Junior Husein Pistoljevic added nine points off the bench on 3-7 shooting from beyond the three-point arc, while Morgan finished with eight points and five rebounds. LU shot 37% (23-63) from the field, including 35% (8-23) on three-pointers, and 76% (19-25) at the free throw line.

Oppland's 19 points led Valparaiso, followed by Shawn Huff with 18 points off the bench. Mohamed Kone added 16 points, Loyd had 14 points, Ron Howard had 12 points, and Urule Igbavboa contributed 10 points. Valpo shot 55% (33-60) from the field, including 50% (9-18) on three-pointers, and 75% (30-40) at the line.

Longwood junior Michael Jefferson, the team's leading scorer (13.4) going into the game, had five points for the Lancers before another injury forced him to the bench about five minutes into the second half.

Game #18

Navy 71 - Longwood 65
January 17, 2006 • Annapolis, Md.

Longwood University dropped a hard-fought 71-65 decision at Navy at Alumni Hall in Annapolis, Maryland. The Lancers were led by junior Maurice Sumter with 19 points, while the Midshipmen were led by Corey Johnson with 19 points.

At Navy, Longwood fell behind 3-0 before Sumter scored a pair of baskets for a 4-3 lead at 17:58. The Midshipmen went back in front 10-6 at 16:04 before the Lancers went on an 11-0 run fueled by a pair of three-point field goals from junior Husein Pistoljevic to lead 17-10 with 11:34 left before the break. A three-pointer from junior Clayton Morgan made it 22-17 at 5:38 before the hosts used a 12-7 run to tie the game at 29-29 at the intermission.

Navy connected on consecutive three-pointers to open the second half and led 35-29 at 18:23. A jumper from Sumter made it 35-33 with 17:20 remaining before an 8-2 run gave the Midshipmen a 43-35 lead at 15:09 capped by a three-pointer from Johnson. The Lancers battled back with a 10-2 run to tie the contest at 45-45 with 11:37 left, only to have the hosts go back ahead 52-47 at 8:18. LU again fought back and tied the score at 52-52 on a three-point play from Sumter at 6:11, and the visitors took their only lead of the second half at 54-52 on a pair of free throws from sophomore Dana Smith.

Navy, however, responded with a 13-4 run to take a 65-58 advantage with 3:07 left on the clock sparked by back-to-back three-pointers from Greg Sprink. A pair of baskets from Sumter and a free throw from Smith cut the lead to 65-63 at 1:43, and Longwood had an opportunity to tie the game with 59-seconds left but freshman Kirk Williams missed two free throws. The Lancers were within 67-65 at 0:18 on two free throws from sophomore Brandon Giles, but the Midshipmen made 4-4 free throws over the final 13-seconds for the final margin.

Sumter finished with his game-high 19 points, adding seven rebounds and five steals. Morgan added 15 points, eight rebounds, and three steals, while Smith just missed his first collegiate double-double with nine points and nine rebounds. Williams had eight points and six rebounds, while Pistoljevic also added eight points for the Lancers. LU shot 37% (24-65) from the field, including just 14% (3-22) on three-pointers, and 67% (14-21) at the line.

Johnson finished with his game-high 19 points that included a trio of three-pointers, while Sprink added a double-double of 16 points and 10 rebounds along with six assists. Kaleo Kina added 13 points for the Midshipmen. Navy shot 42% (23-55) from the field, though shot 48% (13-27) in the second half, including 45% (9-20) on three-pointers (6-12 in second half), and 76% (16-21) at the line.

Longwood forced 23 Navy turnovers but committed 21 turnovers of its own while the closely-played game witnessed eight lead-changes and five ties. The two squads each grabbed 41 rebounds.

LONGWOOD UNIVERSITY BASKETBALL 2005-06 GAME-BY-GAME SUMMARIES

Game #19

Savannah State 70 - Longwood 69
January 21, 2006 • Savannah, Ga.

Longwood University dropped a 70-69 road decision at Savannah State in Georgia as Tiger Javon Randolph made a jumper in the lane with five-seconds remaining. Randolph led SSU with a game-high 34 points, including 28 points in the second half. Junior Maurice Sumter led the Lancers with 22 points.

Longwood led for 39:04 at Savannah State, including 4-0 early as Sumter connected on two quick baskets before Savannah State took its only lead of the first half at 7-6 (16:51) on a layup from Randolph. A pair of Sumter free throws made it 11-7 at 14:58, and a three-pointer from Sumter made it 14-9 at 11:58. The Lancers took their largest lead of the opening half at 20-13 with 8:30 left on a layup from junior Husein Pistoljevic, capping a 14-6 run. A pair of three-pointers by the Tigers made it 20-19 at 6:53 and it would remain close until the intermission. LU did lead 31-25 at 1:54 on an old-fashioned three-point play from junior Clayton Morgan en route to a 31-27 advantage at the break. Total Longwood lead-time in the first half: 19:48.

Sumter opened the second half with a layup and three-pointer to give Longwood a 36-29 lead at 19:25. Randolph responded with five points to spur Savannah State to within 45-42 with 14:02 remaining. The Lancers, however, ran off seven unanswered points to lead by double-digits for the first time at 52-42 (9:42), and maintained the advantage at 60-49 with 6:35 left to play. Randolph took over the game at this juncture, scoring 12 points for the Tigers to bring the hosts within 63-62 at 3:15. LU responded with three of four free throws from Morgan to lead 66-62 at 1:52. A Randolph layup tied the score at 66-66 (1:10) before Morgan made one of two free throws for a 67-66 lead at 0:55. Randolph's jumper at 0:35 put SSU ahead 68-67 before Morgan tipped-in a missed shot at 11-seconds for a 69-68 lead. Randolph finally finished his second-half heroics with another jumper in the lane at 0:05 for the final 70-69 margin as the visitors did not get another attempt at the basket. Total Longwood lead-time in the second half: 19:06.

Sumter finished with 22 points, five rebounds, three assists, two steals, and two blocks to lead Longwood. Morgan finished with his fourth double-double this season of 18 points and 10 rebounds, adding three assists and two steals for the Lancers. Freshman Kirk Williams came off the bench to contribute 11 points and four rebounds. LU shot 44% (20-46) from the field, including 27% (3-11) on three-pointers, and 57% (26-46) at the free throw line – the devastating and disappointing difference in the game.

Randolph and his game-high 34 points included 14-21 shooting from the field, including one three-pointer (1-5), and 5-6 free throws – he was 11-13 from the field in the second half. The only other double-figure scorer for the Tigers was Terry Hill with 10 points. SSU also shot 44% (25-57) from the field, including 20% (3-15) on three-pointers, and a difference-making 77% (17-22) at the line while out-rebounding the visitors 37-33.

Game #20

Longwood 93 - Hartford 90 OT
January 28, 2006 • Farmville, Va.

Longwood University took an exciting 93-90 overtime victory past visiting Hartford in Willett Hall. The Lancers stopped a five-game losing streak with the home win; led by junior Maurice Sumter with 23 points and classmate Clayton Morgan with 20 points and 12 rebounds. The Hawks were led by Kenny Adeleke with 31 points and 15 rebounds, while Aaron Cook added 29 points.

Longwood and Hartford were tied at 79-79 through regulation before the Hawks led 83-81 at 3:17. LU tied the game at 83-83 on a layup from sophomore Lamar Barrett with 2:41 left, and led 88-83 at 1:03 on a jumper from Barrett (1:40) and a three-point field goal from Morgan (1:03). After one of two free throws from Sumter with 33-seconds remaining in OT, the Hawks pulled within 89-88 at 0:08 on a three-pointer from Rich Baker after a pair of free throws earlier by Cook (0:54). Morgan, however, secured the triumph with 4-4 free throws sandwiched around a layup from Adeleke.

The Lancers had taken an early 12-5 lead at the start as Sumter (5) and Barrett (4) scored nine quick points after a three-pointer from sophomore Dana Smith opened the scoring. Hartford tied it at 16-16 with 12:56 left as Adeleke scored nine points. The Hawks opened a 37-30 lead at 5:52 as Adeleke tallied 10 more points inside, and the visitors still led 45-38 at 2:33 before LU scored the final 10 points of the half to lead 48-45 at the intermission as Sumter and Morgan each scored four points and Barrett closed the half with a jumper.

Hartford tied the game at 51-51 with 16:25 left in regulation before Longwood took its largest lead of the game at 68-56 with 8:58 left as Morgan scored inside to close a 17-5 run. The run was highlighted by a baseline drive and thunderous dunk from Smith at 12:54 (60-54). The Lancers still led 72-61 at 6:43 on a pair of free throws by Sumter before the visitors made a final push to force the extra period. A 15-2 run put UH ahead 76-74 at 2:57 as Cook tallied consecutive three-pointers to close the run, adding a free throw on the latter for a rare four-point play. A Sumter basket tied it at 76-76 (2:42), and a three-pointer from sophomore Brandon Giles put Longwood ahead 79-76 with 51-seconds left in regulation. Cook forced the overtime with another three-pointer with 5.7-seconds left.

Sumter led Longwood with his team-high 23 points, adding four rebounds, while Morgan posted his fifth double-double of the season with 20 points and 12 rebounds along with a career-high five assists. Barrett finished with a season-high 18 points, adding five rebounds, while Giles and Smith each contributed nine points with Giles also dishing out a career-high eight assists. LU shot 52% (35-68) from the field, including 47% (8-17) on three-pointers, and 65% (15-23) at the free throw line. The Lancers out-rebounded Hartford 38-35 and forced 15 turnovers.

Adeleke scored 25 of his game-high 31 points in the first half, adding 15 rebounds for his 12th double-double. Cook scored 19 of his 29 points in the second half, finishing 6-11 on three-pointers. Baker and David Ruffin each had 11 points, while Baker also had six assists. Hartford shot 49% (33-68) from the field, including 33% (8-24) on three-pointers, and 89% (16-18) at the line.

Game #21

Longwood 60 - IPFW 59
January 30, 2006 • Farmville, Va.

Longwood University took a hard-fought 60-59 victory past visiting IPFW in Willett Hall, giving the Lancers consecutive wins for the first time in four seasons since the 2002-03 campaign. Junior Maurice Sumter led Longwood with a game-high and season-high 28 points. The Mastodons were led by Quintin Carouthers and Brad Pompey with 15 points each.

The game was delayed for 22-minutes with 9:38 remaining in the second half after IPFW freshman Warren Wallace hit the floor hard while contesting a missed layup attempt by Longwood. Wallace was attended to by athletic training staff members from both schools and subsequently transported by EMT personnel to the local hospital. No immediate word was available on his status.

Longwood and IPFW played to 18 lead changes, and eight ties during the evenly-played contest. The Lancers led 47-42 at the time of the game delay after which each team was allowed a four-minute warm-up period. When play resumed, Justin Hawkins made a three-point field goal to bring the Mastodons within 47-45 at 9:24. A jumper from junior Clayton Morgan put LU back ahead 49-45 (8:55), but IPFW rallied with a 9-2 run to lead 54-51 at 4:38 on a layup from Carouthers.

The Lancers, however, battled back with seven unanswered points to lead 58-54 with 2:28 remaining on a pair of free throws from Morgan. It was a three-pointer from Sumter at 3:49 that put LU ahead or good (56-54). Pompey, though, made a three-pointer to make it 58-57 (2:11) before sophomore Dana Smith made two free throws with 1:10 left for a 60-57 home lead. Pompey's layup made it 60-59 with 20-seconds remaining, and after sophomore Brandon Giles missed the front end of a one-and-one at 00:14.5 for the hosts, Carouthers missed a potential game-winning shot with three-seconds on the clock.

Longwood led 35-33 at the intermission as Sumter scored 15 first-half points while making 6-6 shots from the floor, including 2-2 on three-pointers, and 1-2 free throws. The Lancers jumped ahead 8-2 at 15:34 as Smith scored four quick points. IPFW used an 8-1 run to lead 10-9 (13:21), and the game went back and forth with 11 lead changes the remainder of the period. The largest lead by either team down the first-half stretch was four points for LU late at 35-31 (00:46) on three-straight free throws by Giles who had been fouled on a three-point attempt. Pompey's buzzer-beating jumper made it a two-point game at the break.

Sumter led Longwood with his season-high 28 points, making 12-16 shots from the field, including 3-5 three-pointers, adding seven rebounds while playing the entire 40 minutes. Morgan was the only other double-figure scorer for the Lancers with 12 points, adding nine rebounds. Smith finished with eight points and a game-high and career-high 10 rebounds, while Giles contributed five assists. LU shot 39% (22-57) from the field, including 29% (4-14) on three-pointers, and 86% (12-14) at the free throw line. The Lancers out-rebounded IPFW 41-36.

Carouthers and Pompey each had 15 points to lead IPFW, while Hawkins added 12 points. Tyler Best (6-9), who scored 35 points in the earlier meeting in Indiana (won by the Mastodons 92-90 in overtime), was limited to just four points in this game though he had six assists. IPFW shot 40% (23-57) from the field, including 24% (5-21) on three-pointers, and 50% (8-16) at the line.

LONGWOOD UNIVERSITY BASKETBALL 2005-06 GAME-BY-GAME SUMMARIES

Game #22

Longwood 83 - North Carolina A&T 77
February 2, 2006 • Farmville, Va.

Longwood University took an 83-77 victory past visiting North Carolina A&T in Willett Hall, giving the Lancers three-straight wins for the first time in four seasons since the 2002-03 campaign. Junior Clayton Morgan led Longwood with a game-high and career-high 28 points, adding a game-high nine rebounds. The Aggies were led by Jason Wills with 27 points and eight rebounds.

Longwood took the lead for good early in the first half at 12-10 on a three-point field goal from sophomore Lamar Barrett with 15:02 on the clock. The Lancers maintained the advantage at 18-13 (13:19) on a layup from Morgan, and led 28-23 at 8:02 on a layup from Barrett. LU increased the margin to 37-29 at 3:43 on a pair of free throws from sophomore Dana Smith, and took a 43-35 lead at the intermission as Smith scored inside just ahead of the first-half horn. Smith and Morgan each had 14 points at halftime, while Barrett tallied eight first-half points.

The Lancers continued strong at the start of the second half, taking their largest lead of the contest at 54-40 with 17:10 remaining as junior Maurice Sumter scored six quick points and Smith nailed a three-pointer along with a Morgan layup. North Carolina A&T, however, refused to quit and responded with 10 unanswered points to pull within 54-50 at 15:14. Longwood came right back, though, with a 10-4 run to lead 64-54 with 10:56 on the clock as Sumter made a three-pointer and layup along with five points from Morgan. The Aggies once-again rallied, this time with an 11-1 run to tie the game at 65-65 (6:00), but LU got a layup from Smith and a jumper from Sumter to lead 69-65 at 5:07, increasing the margin again to a 77-70 advantage with 1:20 left. The hosts secured the outcome with 6-6 free throws over the final 29.5-seconds.

Morgan led Longwood with his career-high 28 points, making 9-11 shots from the field and 10-12 free throws, adding nine rebounds and three assists. Smith also finished with a career-high of 19 points, adding eight rebounds and three assists, while Sumter had 19 points, five assists, and four steals. Barrett scored all eight of his points in the first half, while sophomore Brandon Giles also contributed five assists. LU shot 48% (27-56) from the field, including 33% (6-18) on three-pointers, and 85% (23-27) at the free throw line. The Lancers out-rebounded the Aggies 34-31.

Wills had 27 points and eight rebounds to lead North Carolina A&T, while Greg Roberts added 16 points. The Aggies also shot 48% (30-63) from the field, but just 13% (2-15) on three-pointers, adding 71% (15-21) at the line.

Game #23

Texas A&M-CC 92 - Longwood 64
February 4, 2006 • Corpus Christi, Texas

Longwood University dropped a 92-64 decision at Texas A&M-Corpus Christi in Texas. The Lancers had a three-game winning streak stopped while led in scoring by junior Clayton Morgan. The Islanders were led by Josh Washington with 16 points.

Longwood began well in Texas, leading early at 12-6 on consecutive layups from Morgan – the latter with 13:26 left until halftime. Texas A&M-CC, however, put together a 31-2 run to lead 37-14 at 3:29 as the Islanders scored 27 unanswered points to take control of the contest. The Lancers trailed 40-20 at the intermission.

Longwood managed to close to within 16 points on three occasions early in the second half (42-26, 18:17; 45-29, 17:45, 52-36, 14:51). TAMUCC, however, was in the bonus just 3:26 into the second half and shot the double bonus over the final 12:01. The Islanders made 18-23 free throws in the second half, and finished the game 29-37 at the free throw line.

Morgan led Longwood with his team-high 14 points, adding six rebounds, while junior Maurice Sumter added 13 points, five assists, five steals, four rebounds, and three blocks. Sophomore Dana Smith contributed 12 points for the Lancers. LU shot 38% (21-55) from the field, including 24% (4-17) on three-point field goals, and 55% (18-33) at the line.

Washington led Texas A&M-Corpus Christi with his game-high 16 points, while Mike Williams came off the bench for a double-double of 11 points and a game-high 12 rebounds. Aaron White and Matt Slapnick each had 10 points for the Islanders. TAMUCC shot 41% (28-68) from the field, including 33% (7-21) on three-pointers, and 78% (29-37) at the line.

Game #24

Longwood 87 - Shenandoah 68
February 8, 2006 • Farmville, Va.

Longwood University took an 87-68 victory past visiting Shenandoah in Willett Hall, giving the Lancers four-straight home wins and their fourth win in five games overall. Sophomore Dana Smith led Longwood with his first career double-double of 17 points and 10 rebounds, while classmate Brandon Giles added a career-high 15 points. The Hornets were led by Jeremiah Lawrence with 17 points.

Longwood finally pulled away from Division III Shenandoah midway through the second half with a 13-3 run for a 65-55 lead at 8:16. The Lancers had been tied at 52-52 (12:13), the fifth tie of the game, before a jumper from junior Maurice Sumter began the spurt at 11:52 that ended with two free throws from freshman Kirk Williams just 3:36 later. Back-to-back three-point field goals from Giles (3:13, 2:35), and a fastbreak dunk from Williams made it 79-63 with 2:02 remaining. Longwood secured the final margin with 6-10 free throws and another dunk from Sumter over the final 1:40.

Longwood scored the first five points of the game on a layup from sophomore Lamar Barrett and a three-pointer from Smith and never trailed in the contest, though it was tied on the five occasions. A three-pointer from Giles at 14:22 made it 19-11, and 10 first-half points from junior Clayton Morgan kept the Lancers in control during the opening half. A pair of Sumter free throws at 6:42 gave LU its largest lead of the first period at 34-24. A 12-4 Shenandoah run cut the margin to 38-36 just before halftime, though a Smith layup put the hosts in front 40-36 at the intermission.

Smith finished with his first career double-double of 17 points and a career-high 10 rebounds, making 7-10 shots from the field, adding four assists and two blocks. Giles had a career-high 15 points, making 4-5 three-pointers, adding a game-high six assists. Sumter and Barrett each had 15 points as well for the Lancers, with Sumter adding three assists and a game-high five steals. Morgan finished with 13 points and nine rebounds, while Williams contributed 11 points as six players scored in double-figures. LU shot 53% (32-61) from the field, including 28% (5-18) on three-pointers, and 60% (18-30) at the free throw line. The Lancers out-rebounded the Hornets 39-28, and forced 20 turnovers.

Lawrence had 17 points to lead Shenandoah, while Steven Johns added 15 points. The Hornets shot 48% (25-52) from the field, including 25% (4-16) on three-pointers, and 64% (14-22) at the line.

LONGWOOD UNIVERSITY BASKETBALL 2005-06 GAME-BY-GAME SUMMARIES

Game #25

Liberty 75 - Longwood 66
February 13, 2006 • Lynchburg, Va.

Longwood University dropped a disappointing 75-66 decision at Liberty University in Lynchburg. The Flames outscored the Lancers 45-30 in the second half for the home win as Larry Blair scored 16 of his game-high 22 points after halftime. Junior captain Maurice Sumter led the visitors with 16 points.

At Liberty, Longwood took advantage of a 17-7 run to lead by 10 points at 33-23 with just 2:25 left before the intermission. Junior Clayton Morgan and freshman Kirk Williams each scored five points during the outburst, capped by a steal and floater in the lane from Sumter for his 1,000th career point. Sumter is the 15th player in school history to reach the career milestone (1,012), and second Lancer this season to do so (injured Michael Jefferson, 1,078). The Flames, however, were able to reduce the margin to 36-30 at halftime despite 10 first-half points from sophomore Dana Smith.

Liberty made two quick three-point field goals to open the second half, the latter from Blair to tie the game at 36-36 just 49-seconds into the period. Over the next 6:04, the contest was tied six times along with four lead changes before the hosts took the lead for good at 50-48 with 11:34 left on a jumper from Blair. It remained close the rest of the way as Longwood was within 66-64 at 3:35 on a layup from Sumter, but a three-pointer from Evan Risher made it 69-64 with 3:09 to play. The Lancers were within 69-66 at 0:55 on two free throws from sophomore Lamar Barrett before Liberty secured the outcome with the final six points, including a layup from Blair at the buzzer for their largest margin of the contest.

Sumter finished with 16 points and eight rebounds to lead Longwood, while Morgan had 14 points and nine rebounds before fouling out late in the contest (1:56). Smith had 14 points and Williams added 10 points off the bench, including a crowd-pleasing alley-oop dunk in the first half. The Lancers shot 47% (22-47) from the field, including 27% (4-15) on three-pointers, and 62% (18-29) at the free throw line. Longwood out-rebounded the hosts 39-26.

Blair finished with 22 points to lead Liberty, while Risher had 18 points and seven assists. Anthony Smith added 16 points, and Rell Porter contributed 13 points. The Flames shot 53% (27-51) from the field, including 46% (6-13) on three-pointers, and 54% (15-28) at the line.

The game's officials whistled a combined 46 fouls on the night, resulting in a combined 57 free throw attempts by the two teams.

Game #26

Virginia 91 - Longwood 56
February 15, 2006 • Charlottesville, Va.

Longwood University dropped a 91-56 road decision at the University of Virginia in Charlottesville at University Hall. The Lancers were led by junior Clayton Morgan with 11 points and a game-high nine rebounds, while the Cavaliers were led by Sean Singletary with a game-high 20 points.

Playing Virginia for the first-time ever, Longwood did well early as Morgan's jumper tied the game at 2-2 just 1:29 into the contest. Back-to-back three-point field goals from sophomores Brandon Giles and Dana Smith, and a layup from junior Husein Pistoljevic had the Lancers within 12-10 at 15:34. A 10-2 run by the Cavaliers increased the margin to 22-12 with 13:18 left as Singletary had a three-pointer. A pair of free throws from Smith made it 24-16 at 11:39 before the hosts used another 10-2 run to lead 34-18 at 9:07. LU fought back to within 34-22 with 8:32 remaining in the period before hot-shooting UVA closed the half with a 24-12 run to take a commanding 58-34 lead at the intermission.

Virginia shot 62% (21-34) from the field, including 54% (7-13) on three-pointers, and 83% (9-11) at the free throw line during the first 20 minutes. Singletary scored 15 points in the opening half to lead the Cavaliers. Longwood also shot very well at 59% (13-22) from the field in the first half, led by Smith with 10 points and Morgan with nine points.

The Cavaliers increased their advantage to 30 points at 66-36 just 3:45 into the second half and the Lancers were not closer than 26 points, on a couple of occasions, the rest of the way. UVA finally took its largest lead with the final margin of 35 points, outscoring LU 10-1 over the final 1:58 of the contest.

Morgan just missed a double-double with his 11 points and game-high nine rebounds, while freshman Kirk Williams also finished with 11 points and six rebounds off the bench. Smith had 10 points and seven rebounds for the Lancers. LU shot 35% (19-54) from the field, including just 13% (2-16) on three-pointers, and 55% (16-29) at the line.

Singletary added five rebounds and four assists to his game-high 20 points, including 4-7 three-pointers, to lead Virginia. J.R. Reynolds finished with 16 points, including 4-9 three-pointers, scoring 11 points in the second half. Adrian Joseph added 11 points for the Cavaliers. UVA finished the game at 49% (33-67) from the field, including 41% (11-27) on three-pointers, and 78% (14-18) at the line.

Game #27

Longwood 77 - James Madison 73
February 18, 2006 • Farmville, Va.

Longwood University took an exciting 77-73 victory past visiting James Madison in Willett Hall, the Lancers' first-ever win over JMU and fifth-straight home win. Junior Maurice Sumter led Longwood with a game-high 27 points, and sophomore Brandon Giles added a career-high 21 points, including 5-5 on three-point field goals. The Dukes were led by Daniel Freeman with 16 points.

In a hard-fought game that saw 12 lead changes and eight ties, Longwood took the lead for good at 69-67 on a three-pointer from junior Clayton Morgan with 3:01 remaining. The Lancers outscored James Madison 11-6 over the final 3:01, including the huge three by Morgan who added 2-2 free throws at 2:42 before Giles secured the home triumph with 6-8 charity tosses over the final 1:39. Giles scored 12 of his 21 points in the second half for the hosts.

Playing in front of a near-capacity crowd of 2,418, Longwood got off to a tremendous start after University President, Dr. Patricia P. Cormier, presented the unveiling of the school's new athletic logo. Sumter had the hot hand early, making five of his first six shots while scoring 11 points to help the Lancers to a 15-3 lead just 4:34 into the contest. JMU came right back to within 18-15 at 9:53 on a layup from Ray Barbosa, and the Dukes took their first lead at 25-23 (7:14) on a three-pointer from Colbey Santos. LU battled back ahead 30-25 with 6:08 left in the half on seven-straight points from Sumter, including a fastbreak dunk down the left-side of the lane. The visitors forged ahead 39-38 at the intermission as Kyle Swanston sparked JMU with a pair of threes.

James Madison took its largest lead at 47-43 early in the second half at 14:41 on a jumper from Gabriel Chami. Longwood, however, came right back with an 18-6 run to lead 61-53 at 7:59 on the clock. Giles connected on two three-pointers during the run, while sophomore Lamar Barrett scored eight points during the stretch. The Dukes had one more run left, this time at 14-5, to take their final lead at 67-65 with 3:50 left to play before the decisive finish by LU.

Sumter scored 20 of this game-high 27 points in the first half, adding five rebounds and two steals for Longwood. Giles was 5-5 from the field, all three-pointers, and 6-8 at the line for his career-high 21 points, adding a career-high six rebounds along with six assists. Morgan just missed another double-double with 14 points and a game-high nine rebounds, while Barrett finished with 11 points for the Lancers. LU shot 52% (25-48) from the field, including 55% (6-11) on three-pointers, and 81% (21-26) at the free throw line.

Freeman had 16 points to lead James Madison, while Juwann James added 15 points and seven rebounds. Barbosa and Swanston each added 12 points, and David Cooper contributed 11 points. The Dukes shot 45% (26-58) from the field, including 35% (8-23) on three-pointers, and 59% (13-22) at the line.

Longwood is now 1-1 all-time against James Madison in men's basketball in what may be the program's biggest-win-ever while continuing the NCAA Division I Reclassification. The Lancers are competing in year three of their four-year transition, and playing their second season against a Division I schedule.

Official Basketball Box Score -- GAME TOTALS -- FINAL STATISTICS

James Madison vs Longwood

2-18-06 3 p.m. at Farmville, Virginia (Willett Hall)

VISITORS: James Madison 5-20

##	Player Name	TOT-FG	3-PT	FT-FTA	REBOUNDS			PF	TP	A	TO	BLK	S	MIN
					OF	DE	TOT							
01	Swanston, Kyle.....	* 4-10	4-6	0-0	1	5	6	1	12	1	2	0	0	31
02	Cooper, David.....	* 5-7	0-0	1-1	1	3	4	5	11	2	3	1	0	24
14	Belfor, Jomo.....	* 0-2	0-0	2-2	0	2	2	4	2	4	1	0	1	25
22	Freeman, Daniel.....	* 6-12	1-7	3-4	1	3	4	4	16	2	1	0	0	25
33	James, Juwann.....	* 4-8	0-0	7-13	4	3	7	3	15	2	1	2	1	32
03	Posey, Joe.....	0-0	0-0	0-0	0	0	0	0	0	0	0	0	1	1
12	Lampley, Lewis.....	0-1	0-0	0-0	1	2	3	0	0	3	1	0	0	12
15	Chami, Gabriel.....	1-1	0-0	0-2	1	0	1	0	2	1	0	0	0	5
24	Santos, Colbey.....	1-5	1-4	0-0	0	0	0	0	3	0	0	0	0	15
34	Barbosa, Ray.....	5-12	2-6	0-0	2	2	4	1	12	2	3	0	1	30
	Team.....				1	1	2							
	Totals.....	26-58	8-23	13-22	12	21	33	18	73	17	12	3	4	200

TOTAL FG% 1st Half: 13-28 46.4% 2nd Half: 13-30 43.3% Game: 44.8% DEADB
 3-Pt. FG% 1st Half: 7-15 46.7% 2nd Half: 1-8 12.5% Game: 34.8% REBS
 F Throw % 1st Half: 6-10 60.0% 2nd Half: 7-12 58.3% Game: 59.1% 2

HOME TEAM: Longwood 8-19

##	Player Name	TOT-FG	3-PT	FT-FTA	REBOUNDS			PF	TP	A	TO	BLK	S	MIN
					OF	DE	TOT							
01	Morgan, Clayton.....	* 5-15	1-1	3-4	3	6	9	4	14	2	1	0	0	33
10	Giles, Brandon.....	* 5-5	5-5	6-8	0	6	6	1	21	6	3	0	0	40
22	Smith, Dana.....	* 0-3	0-3	2-2	0	3	3	4	2	3	0	1	1	29
45	Sumter, Maurice.....	* 11-16	0-1	5-6	1	4	5	1	27	2	1	0	2	39
50	Barrett, Lamar.....	* 4-9	0-1	3-4	1	3	4	5	11	2	2	0	2	32
03	Williams, Kirk.....	0-0	0-0	2-2	0	3	3	3	2	1	4	0	0	19
32	Pistoljevic, Husein.	0-0	0-0	0-0	0	0	0	0	0	0	0	0	0	5
42	Kosmo, Chad.....	0-0	0-0	0-0	0	0	0	0	0	0	1	0	0	3
	TEAM.....					2	2							
	Totals.....	25-48	6-11	21-26	5	27	32	18	77	16	12	1	5	200

TOTAL FG% 1st Half: 14-26 53.8% 2nd Half: 11-22 50.0% Game: 52.1% DEADB
 3-Pt. FG% 1st Half: 3-7 42.9% 2nd Half: 3-4 75.0% Game: 54.5% REBS
 F Throw % 1st Half: 7-8 87.5% 2nd Half: 14-18 77.8% Game: 80.8% 2

Officials: Joey Caruthers, Tim Comer, Darrius Stone

Technical fouls: James Madison-None. Longwood-None.

Attendance: 2418

Score by Periods 1st 2nd Total

James Madison..... 39 34 - 73

Longwood..... 38 39 - 77

Longwood unveils new athletic logo prior to start

Giles (LU) career-high 21 points

Lancers first-ever win over JMU

Points in the paint-JMU 30,LU 18. Points off turnovers-JMU 13,LU 14.

2nd chance points-JMU 13,LU 6. Fast break points-JMU 0,LU 0.

Bench points-JMU 17,LU 2. Score tied-8 times. Lead changed-12 times.

Last FG-JMU 2nd-00:03, LU 2nd-03:01.

2005-06 Longwood Men's Basketball
Longwood Combined Team Statistics (as of Feb 19, 2006)
All games

RECORD:	OVERALL	HOME	AWAY	NEUTRAL
ALL GAMES.....	(8-19)	(7-3)	(0-13)	(1-3)
CONFERENCE.....	(0-0)	(0-0)	(0-0)	(0-0)
NON-CONFERENCE.....	(8-19)	(7-3)	(0-13)	(1-3)

##	Player	GP-GS	Min--Avg	---TOTAL---		---3-PTS---		FT-FTA	Pct	---REBOUNDS---				PF	FO	A	TO	Blk	Stl	Pts	Avg
				FG-FGA	Pct	3FG-FGA	Pct			Off	Def	Tot	Avg								
45	Sumter, Maurice....	26-26	858 33.0	158-321	.492	22-62	.355	64-86	.744	44	94	138	5.3	52	0	69	71	23	51	402	15.5
20	Jefferson, Michael.	15-15	419 27.9	66-152	.434	21-53	.396	39-51	.765	14	20	34	2.3	23	0	35	48	3	19	192	12.8
01	Morgan, Clayton....	27-21	788 29.2	109-257	.424	8-24	.333	95-133	.714	88	143	231	8.6	60	3	43	60	6	22	321	11.9
12	Butler, Bryan.....	17-10	343 20.2	53-153	.346	32-90	.356	25-27	.926	9	21	30	1.8	30	0	37	43	1	19	163	9.6
22	Smith, Dana.....	27-12	662 24.5	85-193	.440	20-62	.323	51-87	.586	39	81	120	4.4	78	5	37	48	19	22	241	8.9
03	Williams, Kirk.....	27-0	517 19.1	78-142	.549	0-0	.000	49-86	.570	54	59	113	4.2	80	3	29	41	3	15	205	7.6
50	Barrett, Lamar.....	27-27	696 25.8	77-180	.428	6-27	.222	35-54	.648	38	60	98	3.6	85	4	49	38	10	35	195	7.2
10	Giles, Brandon.....	27-16	636 23.6	27-93	.290	22-69	.319	26-33	.788	4	43	47	1.7	59	0	88	51	0	9	102	3.8
32	Pistoljevic, Husein	25-1	267 10.7	32-100	.320	22-83	.265	6-6	1.000	6	22	28	1.1	28	0	10	16	0	7	92	3.7
42	Kosmo, Chad.....	17-6	143 8.4	14-35	.400	0-0	.000	3-17	.176	13	32	45	2.6	25	0	10	16	8	2	31	1.8
00	Holmes, Darren.....	12-0	40 3.3	8-19	.421	0-0	.000	3-4	.750	8	5	13	1.1	11	1	3	2	0	1	19	1.6
30	Larson, Jon.....	3-0	9 3.0	1-4	.250	0-0	.000	2-6	.333	0	1	1	0.3	1	0	0	1	0	0	4	1.3
15	Rowe, Joel.....	15-1	72 4.8	4-13	.308	2-8	.250	3-4	.750	3	1	4	0.3	10	0	8	11	0	5	13	0.9
TEAM.....										49	49	98	3.6	1	7						

Total.....		27	5450	712-1662	.428	155-478	.324	401-594	.675	369	631	1000	37.0	543	16	418	453	73	207	1980	73.3
Opponents.....		27	5450	764-1612	.474	167-469	.356	452-653	.692	336	668	1004	37.2	501	9	428	449	101	219	2147	79.5

TEAM STATISTICS	LU	OPP	DATE	OPPONENT	W/L	SCORE	ATTEND
-----							-----
SCORING.....	1980	2147	*11-18-05	at Nebraska	L	65-80	8139
Points per game.....	73.3	79.5	*11-19-05	vs Louisiana Tech	L	73-83	8114
Scoring margin.....	-6.2	-	*11-20-05	vs Yale	L	67-70	8125
FIELD GOALS-ATT.....	712-1662	764-1612	11-26-05	VIRGINIA-WISE	W	93-49	257
Field goal pct.....	.428	.474	11-28-05	WILLIAM AND MARY	L	75-88	1528
3 POINT FG-ATT.....	155-478	167-469	11-30-05	LIBERTY	W	88-75	1430
3-point FG pct.....	.324	.356	12-3-05	at UMKC	L	69-79	1554
3-pt FG made per game..	5.7	6.2	12-5-05	at Kansas State	L	60-89	4553
FREE THROWS-ATT.....	401-594	452-653	#12-10-05	vs #4 Villanova	L	77-90	7007
Free throw pct.....	.675	.692	12-17-05	HIGH POINT	L	72-88	317
REBOUNDS.....	1000	1004	12-20-05	VALPARAISO	L	79-82	220
Rebounds per game.....	37.0	37.2	12-22-05	at VCU	L	80-91	3466
Rebounding margin.....	-0.1	-	%12-29-05	at College of Charleston	L	53-77	2347
ASSISTS.....	418	428	%12-30-05	vs Long Island	W	86-69	1345
Assists per game.....	15.5	15.9	1-2-06	at Richmond	L	60-74	3440
TURNOVERS.....	453	449	1-5-06	at IPFW	LOT	90-92	2683
Turnovers per game.....	16.8	16.6	1-7-06	at Valparaiso	L	73-105	3251
Turnover margin.....	-0.1	-	1-17-06	at Navy	L	65-71	508
Assist/turnover ratio..	0.9	1.0	1-21-06	at Savannah State	L	69-70	579
STEALS.....	207	219	1-28-06	HARTFORD	W OT	93-90	582
Steals per game.....	7.7	8.1	1-30-06	IPFW	W	60-59	930
BLOCKS.....	73	101	2-2-06	NORTH CAROLINA A&T	W	83-77	1202
Blocks per game.....	2.7	3.7	2-4-06	at Texas A&M-Corpus Christi	L	64-92	2603
WINNING STREAK.....	1	-	2-8-06	SHENANDOAH	W	87-68	1508
Home win streak.....	5	-	2-13-06	at Liberty	L	66-75	1343
ATTENDANCE.....	10392	66709	2-15-06	at Virginia	L	56-91	7652
Home games-Avg/Game....	10-1039	13-3240	2-18-06	JAMES MADISON	W	77-73	2418
Neutral site-Avg/Game..	-	4-6148	* = John Thompson Foundation Challenge; Lincoln, Neb.				

= Boardwalk Hall; Atlantic City, N.J.
 % = CoC Holiday Classic; Charleston, S.C.

SCORE BY PERIODS:	1st	2nd	OT	Total

Longwood.....	979	978	23	- 1980
Opponents.....	1048	1077	22	- 2147

2005-06 Longwood Men's Basketball
Longwood Season Schedule/Results & Leaders (as of Feb 19, 2006)
All games

RECORD:	OVERALL	HOME	AWAY	NEUTRAL
ALL GAMES.....	(8-19)	(7-3)	(0-13)	(1-3)
CONFERENCE.....	(0-0)	(0-0)	(0-0)	(0-0)
NON-CONFERENCE.....	(8-19)	(7-3)	(0-13)	(1-3)

DATE	TIME	OPPONENT	SCORE	ATTEND	HIGH POINTS	HIGH REBOUNDS

11-18-05	7:05 p.m.	* at Nebraska	65-80 L	8139	(17)Sumter, Maurice	(6)Williams, Kirk
11-19-05	6:05 p.m.	* vs Louisiana Tech	73-83 L	8114	(26)Jefferson, Michael	(8)Sumter, Maurice
11-20-05	1 p.m.	* vs Yale	67-70 L	8125	(11)Sumter, Maurice	(9)Kosmo, Chad
11-26-05	3 p.m.	VIRGINIA-WISE	W 93-49	257	(15)Smith, Dana	(9)Williams, Kirk
						(9)Smith, Dana
11-28-05	7 p.m.	WILLIAM AND MARY	75-88 L	1528	(16)Jefferson, Michael	(9)Morgan, Clayton
11-30-05	7 p.m.	LIBERTY	W 88-75	1430	(22)Jefferson, Michael	(9)Sumter, Maurice
12-3-05	7 p.m.	at UMKC	69-79 L	1554	(17)Jefferson, Michael	(16)Morgan, Clayton
12-5-05	7 p.m.	at Kansas State	60-89 L	4553	(16)Jefferson, Michael	(9)Morgan, Clayton
12-10-05	7:30 p.m.	# vs #4 Villanova	77-90 L	7007	(19)Jefferson, Michael	(8)Sumter, Maurice
						(8)Morgan, Clayton
12-17-05	2 p.m.	HIGH POINT	72-88 L	317	(18)Jefferson, Michael	(15)Morgan, Clayton
12-20-05	7 p.m.	VALPARAISO	79-82 L	220	(25)Morgan, Clayton	(13)Morgan, Clayton
					(25)Sumter, Maurice	
12-22-05	7:30 p.m.	at VCU	80-91 L	3466	(19)Butler, Bryan	(7)Williams, Kirk
						(7)Morgan, Clayton
12-29-05	7:30 p.m.	% at College of Charleston	53-77 L	2347	(8)Kosmo, Chad	(10)Kosmo, Chad
					(8)Williams, Kirk	
12-30-05	5:30 p.m.	% vs Long Island	W 86-69	1345	(16)Morgan, Clayton	(16)Morgan, Clayton
1-2-06	4:05 p.m.	at Richmond	60-74 L	3440	(16)Sumter, Maurice	(6)Smith, Dana
1-5-06	7 p.m.	at IPFW	90-92 LOT	2683	(21)Jefferson, Michael	(7)Morgan, Clayton
						(7)Barrett, Lamar
1-7-06	7:05 p.m.	at Valparaiso	73-105 L	3251	(17)Sumter, Maurice	(5)Morgan, Clayton
1-17-06	7:30 p.m.	at Navy	65-71 L	508	(19)Sumter, Maurice	(9)Smith, Dana
1-21-06	4:00 p.m.	at Savannah State	69-70 L	579	(22)Sumter, Maurice	(10)Morgan, Clayton
1-28-06	2 p.m.	HARTFORD	WOT 93-90	582	(23)Sumter, Maurice	(12)Morgan, Clayton
1-30-06	7 p.m.	IPFW	W 60-59	930	(28)Sumter, Maurice	(10)Smith, Dana
2-2-06	7 p.m.	NORTH CAROLINA A&T	W 83-77	1202	(28)Morgan, Clayton	(9)Morgan, Clayton
2-4-06	7 p.m.	at Texas A&M-Corpus Christi	64-92 L	2603	(14)Morgan, Clayton	(6)Morgan, Clayton
2-8-06	7 p.m.	SHENANDOAH	W 87-68	1508	(17)Smith, Dana	(10)Smith, Dana
2-13-06	7 p.m.	at Liberty	66-75 L	1343	(16)Sumter, Maurice	(9)Morgan, Clayton
2-15-06	7 p.m.	at Virginia	56-91 L	7652	(11)Morgan, Clayton	(9)Morgan, Clayton
					(11)Williams, Kirk	
2-18-06	3 p.m.	JAMES MADISON	W 77-73	2418	(27)Sumter, Maurice	(9)Morgan, Clayton

* = John Thompson Foundation Challenge; Lincoln, Neb.

= Boardwalk Hall; Atlantic City, N.J.

% = CoC Holiday Classic; Charleston, S.C.

ATTENDANCE SUMMARY	GAMES	TOTALS	AVG/GAME
HOME.....	10	10392	1039
AWAY.....	13	42118	3240
NEUTRAL.....	4	24591	6148
TOTAL.....	27	77101	2856

2005-06 Longwood Men's Basketball
Longwood Team Game-by-Game Comparison (as of Feb 19, 2006)
All games

Opponent	1st	2nd	Score	Mar	Total FG	FG Pct	3-Pointers	3FG Pct	Free Throws	FT Pct	Rebounds	Assist	TOver	Block	Steal	Fouls
-----	--/--	--/--	---/---	---	-----/-----	-----/-----	-----/-----	-----/-----	-----/-----	-----/-----	-----/-----	-----/-----	---/---	--/--	--/--	--/--
Nebraska.....	32/41	33/39	65-80	(15)	24-61/29-58	.393/.500	12-28/ 7-15	.429/.467	5-10/15-27	.500/.556	32/45 (13)	16/17	19/21	0/2	6/7	26/15
Louisiana Tech.....	35/39	38/44	73-83	(10)	28-56/29-54	.500/.537	6-18/ 3-10	.333/.300	11-13/22-33	.846/.667	28/32 (4)	20/12	23/20	2/2	6/9	25/20
Yale.....	39/33	28/37	67-70	(3)	23-65/23-61	.354/.377	7-25/ 2-10	.280/.200	14-23/22-32	.609/.688	42/48 (6)	16/16	17/20	4/4	9/8	27/19
VIRGINIA-WISE.....	48/28	45/21	93-49	+44	38-81/16-49	.469/.327	8-26/ 4-15	.308/.267	9-15/13-19	.600/.684	51/32 +19	21/3	9/21	4/1	14/5	20/14
WILLIAM AND MARY.....	27/41	48/47	75-88	(13)	29-63/29-60	.460/.483	5-18/ 7-16	.278/.438	12-18/23-29	.667/.793	28/44 (16)	9/19	15/19	4/0	11/5	23/21
LIBERTY.....	44/25	44/50	88-75	+13	29-60/31-58	.483/.534	3-7 / 4-14	.429/.286	27-35/ 9-13	.771/.692	34/28 +6	13/10	15/21	0/3	11/9	17/25
UMKC.....	36/34	33/45	69-79	(10)	23-66/32-58	.348/.552	6-25/ 5-14	.240/.357	17-21/10-17	.810/.588	40/37 +3	10/18	14/15	1/3	5/7	16/12
Kansas State.....	35/36	25/53	60-89	(29)	21-64/35-73	.328/.479	9-21/ 6-12	.429/.500	9-17/13-16	.529/.813	38/45 (7)	13/28	24/15	3/9	10/10	18/17
#4 Villanova.....	32/44	45/46	77-90	(13)	27-61/32-67	.443/.478	6-12/ 9-19	.500/.474	17-22/17-31	.773/.548	44/35 +9	19/19	19/8	5/8	3/8	21/18
HIGH POINT.....	29/50	43/38	72-88	(16)	26-66/32-56	.394/.571	2-12/ 6-11	.167/.545	18-21/18-23	.857/.783	39/28 +11	12/18	14/18	5/4	9/5	17/18
VALPARAISO.....	36/45	43/37	79-82	(3)	30-70/29-58	.429/.500	2-14/ 9-21	.143/.429	17-20/15-22	.850/.682	37/37 -	15/20	17/21	0/4	7/6	19/16
VCU.....	39/51	41/40	80-91	(11)	28-63/31-62	.444/.500	8-17/ 9-27	.471/.333	16-25/20-24	.640/.833	42/30 +12	11/19	20/14	3/6	8/12	18/20
College of Charleston.....	29/39	24/38	53-77	(24)	23-77/30-71	.299/.423	4-21/ 4-19	.190/.211	3-12/13-22	.250/.591	48/56 (8)	14/16	20/18	3/8	9/12	16/14
Long Island.....	47/37	39/32	86-69	+17	34-63/17-57	.540/.298	6-13/ 6-22	.462/.273	12-18/29-38	.667/.763	42/38 +4	23/8	18/21	2/3	9/7	25/17
Richmond.....	29/35	31/39	60-74	(14)	23-59/30-52	.390/.577	7-19/ 7-13	.368/.538	7-10/ 7-11	.700/.636	29/33 (4)	13/21	15/16	1/5	7/5	12/13
IPFW.....	43/42	38/39	90-92	(2)	36-67/33-62	.537/.532	11-20/ 7-18	.550/.389	7-12/19-30	.583/.633	31/35 (4)	24/16	11/9	3/6	6/7	22/11
Valparaiso.....	45/56	28/49	73-105	(32)	23-63/33-60	.365/.550	8-23/ 9-18	.348/.500	19-25/30-40	.760/.750	33/41 (8)	15/21	21/13	1/6	7/11	27/21
Navy.....	29/29	36/42	65-71	(6)	24-65/23-55	.369/.418	3-22/ 9-20	.136/.450	14-21/16-21	.667/.762	41/41 -	14/13	21/23	9/4	10/9	18/17
Savannah State.....	31/27	38/43	69-70	(1)	20-46/25-57	.435/.439	3-11/ 3-15	.273/.200	26-46/17-22	.565/.773	33/37 (4)	16/8	19/18	3/4	4/11	18/31
HARTFORD.....	48/45	31/34	93-90	+3	35-68/33-68	.515/.485	8-17/ 8-24	.471/.333	15-23/16-18	.652/.889	38/35 +3	23/17	12/15	3/3	7/9	15/22
IPFW.....	35/33	25/26	60-59	+1	22-57/23-57	.386/.404	4-14/ 5-21	.286/.238	12-14/ 8-16	.857/.500	41/36 +5	13/9	10/10	1/1	3/3	16/15
NORTH CAROLINA A&T.....	43/35	40/42	83-77	+6	27-56/30-63	.482/.476	6-18/ 2-15	.333/.133	23-27/15-21	.852/.714	34/31 +3	19/14	19/16	2/2	9/10	17/19
Texas A&M-Corpus Christi.....	20/40	44/52	64-92	(28)	21-55/28-68	.382/.412	4-17/ 7-21	.235/.333	18-33/29-37	.545/.784	30/53 (23)	12/18	21/20	5/4	11/12	25/25
SHENANDOAH.....	40/36	47/32	87-68	+19	32-61/25-52	.525/.481	5-18/ 4-16	.278/.250	18-30/14-22	.600/.636	39/28 +11	20/12	14/20	3/1	12/9	21/21
Liberty.....	36/30	30/45	66-75	(9)	22-47/27-51	.468/.529	4-15/ 6-13	.267/.462	18-28/15-29	.643/.517	39/26 +13	14/16	16/11	2/1	5/10	24/22
Virginia.....	34/58	22/33	56-91	(35)	19-54/33-67	.352/.493	2-16/11-27	.125/.407	16-29/14-18	.552/.778	35/40 (5)	7/23	18/14	3/4	4/9	22/20
JAMES MADISON.....	38/39	39/34	77-73	+4	25-48/26-58	.521/.448	6-11/ 8-23	.545/.348	21-26/13-22	.808/.591	32/33 (1)	16/17	12/12	1/3	5/4	18/18

Note: Game totals are displayed in the format TEAM/OPPONENT for each category

2005-06 Longwood Men's Basketball
Longwood Category Leaders (as of Feb 19, 2006)
All games

FG PERCENTAGE	FG ATT	Pct
-----	-----	-----
Williams, Kirk.....	78 142	.549
Sumter, Maurice.....	158 321	.492
Smith, Dana.....	85 193	.440
Jefferson, Michael..	66 152	.434
Barrett, Lamar.....	77 180	.428
Morgan, Clayton.....	109 257	.424
Holmes, Darren.....	8 19	.421
Kosmo, Chad.....	14 35	.400
Butler, Bryan.....	53 153	.346
Pistoljevic, Husein.	32 100	.320
Rowe, Joel.....	4 13	.308
Giles, Brandon.....	27 93	.290

3-POINT PERCENTAGE	3FG ATT	Pct
-----	-----	-----
Jefferson, Michael..	21 53	.396
Butler, Bryan.....	32 90	.356
Sumter, Maurice.....	22 62	.355
Morgan, Clayton.....	8 24	.333
Smith, Dana.....	20 62	.323
Giles, Brandon.....	22 69	.319
Pistoljevic, Husein.	22 83	.265
Rowe, Joel.....	2 8	.250
Barrett, Lamar.....	6 27	.222

FT PERCENTAGE	FT ATT	Pct
-----	-----	-----
Pistoljevic, Husein.	6 6	1.000
Butler, Bryan.....	25 27	.926
Giles, Brandon.....	26 33	.788
Jefferson, Michael..	39 51	.765
Rowe, Joel.....	3 4	.750
Holmes, Darren.....	3 4	.750
Sumter, Maurice.....	64 86	.744
Morgan, Clayton.....	95 133	.714
Barrett, Lamar.....	35 54	.648
Smith, Dana.....	51 87	.586
Williams, Kirk.....	49 86	.570
Larson, Jon.....	2 6	.333

POINTS	G	Pts	Pts/G
-----	-----	-----	-----
Sumter, Maurice.....	26	402	15.5
Morgan, Clayton.....	27	321	11.9
Smith, Dana.....	27	241	8.9
Williams, Kirk.....	27	205	7.6
Barrett, Lamar.....	27	195	7.2
Jefferson, Michael..	15	192	12.8
Butler, Bryan.....	17	163	9.6
Giles, Brandon.....	27	102	3.8
Pistoljevic, Husein.	25	92	3.7
Kosmo, Chad.....	17	31	1.8
Holmes, Darren.....	12	19	1.6
Rowe, Joel.....	15	13	0.9

FIELD GOAL ATTEMPTS	G	Att	Att/G
-----	-----	-----	-----
Sumter, Maurice.....	26	321	12.3
Morgan, Clayton.....	27	257	9.5
Smith, Dana.....	27	193	7.1
Barrett, Lamar.....	27	180	6.7
Butler, Bryan.....	17	153	9.0

FIELD GOALS MADE	G	Made	Made/G
-----	-----	-----	-----
Sumter, Maurice.....	26	158	6.1
Morgan, Clayton.....	27	109	4.0
Smith, Dana.....	27	85	3.1
Williams, Kirk.....	27	78	2.9
Barrett, Lamar.....	27	77	2.9

3-POINT FG ATTEMPTS	G	Att	Att/G
-----	-----	-----	-----
Butler, Bryan.....	17	90	5.3
Pistoljevic, Husein.	25	83	3.3
Giles, Brandon.....	27	69	2.6
Smith, Dana.....	27	62	2.3
Sumter, Maurice.....	26	62	2.4

3-POINT FGS MADE	G	Made	Made/G
-----	-----	-----	-----
Butler, Bryan.....	17	32	1.9
Pistoljevic, Husein.	25	22	0.9
Giles, Brandon.....	27	22	0.8
Sumter, Maurice.....	26	22	0.8
Jefferson, Michael..	15	21	1.4

FREE THROW ATTEMPTS	G	Att	Att/G
-----	-----	-----	-----
Morgan, Clayton.....	27	133	4.9
Smith, Dana.....	27	87	3.2
Sumter, Maurice.....	26	86	3.3
Williams, Kirk.....	27	86	3.2
Barrett, Lamar.....	27	54	2.0

FREE THROWS MADE	G	Made	Made/G
-----	-----	-----	-----
Morgan, Clayton.....	27	95	3.5
Sumter, Maurice.....	26	64	2.5
Smith, Dana.....	27	51	1.9
Williams, Kirk.....	27	49	1.8
Jefferson, Michael..	15	39	2.6

POINTS AVERAGE	G	Pts	Avg/G
-----	-----	-----	-----
Sumter, Maurice.....	26	402	15.5
Jefferson, Michael..	15	192	12.8
Morgan, Clayton.....	27	321	11.9
Butler, Bryan.....	17	163	9.6
Smith, Dana.....	27	241	8.9
Williams, Kirk.....	27	205	7.6
Barrett, Lamar.....	27	195	7.2
Giles, Brandon.....	27	102	3.8
Pistoljevic, Husein.	25	92	3.7
Kosmo, Chad.....	17	31	1.8
Holmes, Darren.....	12	19	1.6
Larson, Jon.....	3	4	1.3

2005-06 Longwood Men's Basketball
Longwood Category Leaders (as of Feb 19, 2006)
All games

REBOUNDS	G	Reb	Reb/G
<hr/>			
Morgan, Clayton.....	27	231	8.6
Sumter, Maurice.....	26	138	5.3
Smith, Dana.....	27	120	4.4
Williams, Kirk.....	27	113	4.2
Barrett, Lamar.....	27	98	3.6

REBOUND AVERAGE	G	Reb	Avg/G
<hr/>			
Morgan, Clayton.....	27	231	8.6
Sumter, Maurice.....	26	138	5.3
Smith, Dana.....	27	120	4.4
Williams, Kirk.....	27	113	4.2
Barrett, Lamar.....	27	98	3.6

OFFENSIVE REBOUNDS	G	No.	Avg/G
<hr/>			
Morgan, Clayton.....	27	88	3.3
Williams, Kirk.....	27	54	2.0
Sumter, Maurice.....	26	44	1.7
Smith, Dana.....	27	39	1.4
Barrett, Lamar.....	27	38	1.4

DEFENSIVE REBOUNDS	G	No.	Avg/G
<hr/>			
Morgan, Clayton.....	27	143	5.3
Sumter, Maurice.....	26	94	3.6
Smith, Dana.....	27	81	3.0
Barrett, Lamar.....	27	60	2.2
Williams, Kirk.....	27	59	2.2

FOULS	G	No.	Per/G
<hr/>			
Barrett, Lamar.....	27	85	3.1
Williams, Kirk.....	27	80	3.0
Smith, Dana.....	27	78	2.9
Morgan, Clayton.....	27	60	2.2
Giles, Brandon.....	27	59	2.2

FOULOUTS	G	No.
<hr/>		
Smith, Dana.....	27	5
Barrett, Lamar.....	27	4
Morgan, Clayton.....	27	3
Williams, Kirk.....	27	3
Holmes, Darren.....	12	1

ASSISTS	G	No.	A/G
<hr/>			
Giles, Brandon.....	27	88	3.3
Sumter, Maurice.....	26	69	2.7
Barrett, Lamar.....	27	49	1.8
Morgan, Clayton.....	27	43	1.6
Smith, Dana.....	27	37	1.4
Butler, Bryan.....	17	37	2.2

STEALS	G	No.	S/G
<hr/>			
Sumter, Maurice.....	26	51	2.0
Barrett, Lamar.....	27	35	1.3
Smith, Dana.....	27	22	0.8
Morgan, Clayton.....	27	22	0.8
Butler, Bryan.....	17	19	1.1
Jefferson, Michael..	15	19	1.3

BLOCKED SHOTS	G	No.	Blk/G
<hr/>			
Sumter, Maurice.....	26	23	0.9
Smith, Dana.....	27	19	0.7
Barrett, Lamar.....	27	10	0.4
Kosmo, Chad.....	17	8	0.5
Morgan, Clayton.....	27	6	0.2

MINUTES	G	No.	Min/G
<hr/>			
Sumter, Maurice.....	26	858	33.0
Morgan, Clayton.....	27	788	29.2
Barrett, Lamar.....	27	696	25.8
Smith, Dana.....	27	662	24.5
Giles, Brandon.....	27	636	23.6

TURNOVERS	G	No.	TO/G
<hr/>			
Sumter, Maurice.....	26	71	2.7
Morgan, Clayton.....	27	60	2.2
Giles, Brandon.....	27	51	1.9
Smith, Dana.....	27	48	1.8
Jefferson, Michael..	15	48	3.2

2005-06 Longwood Men's Basketball
Longwood High/Low Analysis (as of Feb 19, 2006)
All games

Longwood - TEAM GAME HIGHS

POINTS.....	93	vs Hartford (1-28-06)
	93	vs Virginia-Wise (11-26-05)
	90	at IPFW (1-5-06)
	88	vs Liberty (11-30-05)
	87	vs Shenandoah (2-8-06)
FIELD GOALS MADE.....	38	vs Virginia-Wise (11-26-05)
	36	at IPFW (1-5-06)
FIELD GOAL ATTEMPTS.....	81	vs Virginia-Wise (11-26-05)
	77	at College of Charleston (12-29-05)
FIELD GOAL PERCENTAGE.....	.540 (34-63)	vs Long Island (12-30-05)
	.537 (36-67)	at IPFW (1-5-06)
3 PT FIELD GOALS MADE.....	12	at Nebraska (11-18-05)
	11	at IPFW (1-5-06)
3 PT FG ATTEMPTS.....	28	at Nebraska (11-18-05)
	26	vs Virginia-Wise (11-26-05)
3 PT FG PERCENTAGE.....	.550 (11-20)	at IPFW (1-5-06)
	.545 (6-11)	vs James Madison (2-18-06)
FREE THROWS MADE.....	27	vs Liberty (11-30-05)
	26	at Savannah State (1-21-06)
FREE THROW ATTEMPTS.....	46	at Savannah State (1-21-06)
	35	vs Liberty (11-30-05)
FREE THROW PERCENTAGE.....	.857 (18-21)	vs High Point (12-17-05)
	.857 (12-14)	vs IPFW (1-30-06)
REBOUNDS.....	51	vs Virginia-Wise (11-26-05)
	48	at College of Charleston (12-29-05)
ASSISTS.....	24	at IPFW (1-5-06)
	23	vs Hartford (1-28-06)
	23	vs Long Island (12-30-05)
STEALS.....	14	vs Virginia-Wise (11-26-05)
	12	vs Shenandoah (2-8-06)
BLOCKED SHOTS.....	9	at Navy (1-17-06)
	5	at Texas A&M-Corpus Christi (2-4-06)
	5	vs High Point (12-17-05)
	5	vs #4 Villanova (12-10-05)
TURNOVERS.....	24	at Kansas State (12-5-05)
	23	vs Louisiana Tech (11-19-05)
FOULS.....	27	at Valparaiso (1-7-06)
	27	vs Yale (11-20-05)

2005-06 Longwood Men's Basketball
Longwood High/Low Analysis (as of Feb 19, 2006)
All games

Opponent - GAME HIGHS

POINTS.....	105	at Valparaiso (1-7-06)
	92	at Texas A&M-Corpus Christi (2-4-06)
	92	at IPFW (1-5-06)
	91	at Virginia (2-15-06)
	91	at VCU (12-22-05)
FIELD GOALS MADE.....	35	at Kansas State (12-5-05)
	33	at Virginia (2-15-06)
	33	vs Hartford (1-28-06)
	33	at Valparaiso (1-7-06)
	33	at IPFW (1-5-06)
FIELD GOAL ATTEMPTS.....	73	at Kansas State (12-5-05)
	71	at College of Charleston (12-29-05)
FIELD GOAL PERCENTAGE.....	.577 (30-52)	at Richmond (1-2-06)
	.571 (32-56)	vs High Point (12-17-05)
3 PT FIELD GOALS MADE.....	11	at Virginia (2-15-06)
	9	at Navy (1-17-06)
	9	at Valparaiso (1-7-06)
	9	at VCU (12-22-05)
	9	vs Valparaiso (12-20-05)
	9	vs #4 Villanova (12-10-05)
3 PT FG ATTEMPTS.....	27	at Virginia (2-15-06)
	27	at VCU (12-22-05)
3 PT FG PERCENTAGE.....	.545 (6-11)	vs High Point (12-17-05)
	.538 (7-13)	at Richmond (1-2-06)
FREE THROWS MADE.....	30	at Valparaiso (1-7-06)
	29	at Texas A&M-Corpus Christi (2-4-06)
	29	vs Long Island (12-30-05)
FREE THROW ATTEMPTS.....	40	at Valparaiso (1-7-06)
	38	vs Long Island (12-30-05)
FREE THROW PERCENTAGE.....	.889 (16-18)	vs Hartford (1-28-06)
	.833 (20-24)	at VCU (12-22-05)
REBOUNDS.....	56	at College of Charleston (12-29-05)
	53	at Texas A&M-Corpus Christi (2-4-06)
ASSISTS.....	28	at Kansas State (12-5-05)
	23	at Virginia (2-15-06)
STEALS.....	12	at Texas A&M-Corpus Christi (2-4-06)
	12	at College of Charleston (12-29-05)
	12	at VCU (12-22-05)
BLOCKED SHOTS.....	9	at Kansas State (12-5-05)
	8	at College of Charleston (12-29-05)
	8	vs #4 Villanova (12-10-05)
TURNOVERS.....	23	at Navy (1-17-06)
	21	vs Long Island (12-30-05)
	21	vs Valparaiso (12-20-05)
	21	vs Liberty (11-30-05)
	21	vs Virginia-Wise (11-26-05)
	21	at Nebraska (11-18-05)
FOULS.....	31	at Savannah State (1-21-06)
	25	at Texas A&M-Corpus Christi (2-4-06)
	25	vs Liberty (11-30-05)

2005-06 Longwood Men's Basketball
Longwood High/Low Analysis (as of Feb 19, 2006)
All games

Longwood - GAME LOWS

POINTS.....	53	at College of Charleston (12-29-05)
	56	at Virginia (2-15-06)
	60	at Kansas State (12-5-05)
	60	at Richmond (1-2-06)
	60	vs IPFW (1-30-06)
FIELD GOALS MADE.....	19	at Virginia (2-15-06)
	20	at Savannah State (1-21-06)
FIELD GOAL ATTEMPTS.....	46	at Savannah State (1-21-06)
	47	at Liberty (2-13-06)
FIELD GOAL PERCENTAGE.....	.299 (23-77)	at College of Charleston (12-29-05)
	.328 (21-64)	at Kansas State (12-5-05)
3 PT FIELD GOALS MADE.....	2	vs High Point (12-17-05)
	2	vs Valparaiso (12-20-05)
	2	at Virginia (2-15-06)
3 PT FG ATTEMPTS.....	7	vs Liberty (11-30-05)
	11	at Savannah State (1-21-06)
	11	vs James Madison (2-18-06)
3 PT FG PERCENTAGE.....	.125 (2-16)	at Virginia (2-15-06)
	.136 (3-22)	at Navy (1-17-06)
FREE THROWS MADE.....	3	at College of Charleston (12-29-05)
	5	at Nebraska (11-18-05)
FREE THROW ATTEMPTS.....	10	at Nebraska (11-18-05)
	10	at Richmond (1-2-06)
FREE THROW PERCENTAGE.....	.250 (3-12)	at College of Charleston (12-29-05)
	.500 (5-10)	at Nebraska (11-18-05)
REBOUNDS.....	28	vs Louisiana Tech (11-19-05)
	28	vs William and Mary (11-28-05)
ASSISTS.....	7	at Virginia (2-15-06)
	9	vs William and Mary (11-28-05)
STEALS.....	3	vs #4 Villanova (12-10-05)
	3	vs IPFW (1-30-06)
BLOCKED SHOTS.....	0	at Nebraska (11-18-05)
	0	vs Liberty (11-30-05)
	0	vs Valparaiso (12-20-05)
TURNOVERS.....	9	vs Virginia-Wise (11-26-05)
	10	vs IPFW (1-30-06)
FOULS.....	12	at Richmond (1-2-06)
	15	vs Hartford (1-28-06)

2005-06 Longwood Men's Basketball
Longwood High/Low Analysis (as of Feb 19, 2006)
All games

Opponent - GAME LOWS

POINTS.....	49	vs Virginia-Wise (11-26-05)
	59	vs IPFW (1-30-06)
	68	vs Shenandoah (2-8-06)
	69	vs Long Island (12-30-05)
	70	vs Yale (11-20-05)
	70	at Savannah State (1-21-06)
FIELD GOALS MADE.....	16	vs Virginia-Wise (11-26-05)
	17	vs Long Island (12-30-05)
FIELD GOAL ATTEMPTS.....	49	vs Virginia-Wise (11-26-05)
	51	at Liberty (2-13-06)
FIELD GOAL PERCENTAGE.....	.298 (17-57)	vs Long Island (12-30-05)
	.327 (16-49)	vs Virginia-Wise (11-26-05)
3 PT FIELD GOALS MADE.....	2	vs Yale (11-20-05)
	2	vs North Carolina A&T (2-2-06)
3 PT FG ATTEMPTS.....	10	vs Louisiana Tech (11-19-05)
	10	vs Yale (11-20-05)
3 PT FG PERCENTAGE.....	.133 (2-15)	vs North Carolina A&T (2-2-06)
	.200 (2-10)	vs Yale (11-20-05)
	.200 (3-15)	at Savannah State (1-21-06)
FREE THROWS MADE.....	7	at Richmond (1-2-06)
	8	vs IPFW (1-30-06)
FREE THROW ATTEMPTS.....	11	at Richmond (1-2-06)
	13	vs Liberty (11-30-05)
FREE THROW PERCENTAGE.....	.500 (8-16)	vs IPFW (1-30-06)
	.517 (15-29)	at Liberty (2-13-06)
REBOUNDS.....	26	at Liberty (2-13-06)
	28	vs Liberty (11-30-05)
	28	vs High Point (12-17-05)
	28	vs Shenandoah (2-8-06)
ASSISTS.....	3	vs Virginia-Wise (11-26-05)
	8	vs Long Island (12-30-05)
	8	at Savannah State (1-21-06)
STEALS.....	3	vs IPFW (1-30-06)
	4	vs James Madison (2-18-06)
BLOCKED SHOTS.....	0	vs William and Mary (11-28-05)
	1	vs Virginia-Wise (11-26-05)
	1	vs IPFW (1-30-06)
	1	vs Shenandoah (2-8-06)
	1	at Liberty (2-13-06)
TURNOVERS.....	8	vs #4 Villanova (12-10-05)
	9	at IPFW (1-5-06)
FOULS.....	11	at IPFW (1-5-06)
	12	at UMKC (12-3-05)

2005-06 Longwood Men's Basketball
Longwood High/Low Analysis (as of Feb 19, 2006)
All games

Longwood - INDIVIDUAL GAME HIGHS

POINTS.....	28	Morgan, Clayton vs North Carolina A&T (2-2-06)
	28	Sumter, Maurice vs IPFW (1-30-06)
	27	Sumter, Maurice vs James Madison (2-18-06)
	26	Jefferson, Michael vs Louisiana Tech (11-19-05)
	25	Sumter, Maurice vs Valparaiso (12-20-05)
	25	Morgan, Clayton vs Valparaiso (12-20-05)
FIELD GOALS MADE.....	12	Sumter, Maurice vs IPFW (1-30-06)
	11	Sumter, Maurice vs James Madison (2-18-06)
FIELD GOAL ATT.....	23	Sumter, Maurice at Navy (1-17-06)
	18	Morgan, Clayton vs Valparaiso (12-20-05)
FG PCT (min 5 made).....	1.000 (6-6)	Smith, Dana vs Virginia-Wise (11-26-05)
	1.000 (5-5)	Giles, Brandon vs James Madison (2-18-06)
3 PT FG MADE.....	5	Giles, Brandon vs James Madison (2-18-06)
	5	Butler, Bryan at VCU (12-22-05)
3 PT FG ATTEMPTS.....	10	Butler, Bryan at Richmond (1-2-06)
	9	Butler, Bryan at VCU (12-22-05)
	9	Butler, Bryan at Nebraska (11-18-05)
3-PT FG PCT (min 2 made).....	1.000 (5-5)	Giles, Brandon vs James Madison (2-18-06)
	1.000 (4-4)	Smith, Dana at Nebraska (11-18-05)
	1.000 (2-2)	Pistoljevic, Husein vs Hartford (1-28-06)
	1.000 (2-2)	Smith, Dana at IPFW (1-5-06)
	1.000 (2-2)	Smith, Dana vs #4 Villanova (12-10-05)
FREE THROWS MADE.....	12	Morgan, Clayton at Savannah State (1-21-06)
	10	Morgan, Clayton vs North Carolina A&T (2-2-06)
FREE THROW ATT.....	17	Morgan, Clayton at Savannah State (1-21-06)
	15	Williams, Kirk at Savannah State (1-21-06)
FT PCT (min 3 made).....	1.000 (8-8)	Sumter, Maurice at Valparaiso (1-7-06)
	1.000 (6-6)	Morgan, Clayton at Texas A&M-Corpus Christi (2-4-06)
	1.000 (6-6)	Butler, Bryan at Valparaiso (1-7-06)
	1.000 (6-6)	Sumter, Maurice vs Valparaiso (12-20-05)
	1.000 (6-6)	Jefferson, Michael vs Louisiana Tech (11-19-05)
	1.000 (5-5)	Morgan, Clayton at UMKC (12-3-05)
	1.000 (4-4)	Barrett, Lamar at Liberty (2-13-06)
	1.000 (4-4)	Smith, Dana vs IPFW (1-30-06)
	1.000 (4-4)	Morgan, Clayton vs IPFW (1-30-06)
	1.000 (4-4)	Butler, Bryan vs Long Island (12-30-05)
	1.000 (4-4)	Butler, Bryan at VCU (12-22-05)
	1.000 (4-4)	Smith, Dana vs High Point (12-17-05)
	1.000 (4-4)	Williams, Kirk at UMKC (12-3-05)
	1.000 (4-4)	Jefferson, Michael vs Yale (11-20-05)
	1.000 (3-3)	Barrett, Lamar vs Shenandoah (2-8-06)
	1.000 (3-3)	Giles, Brandon at Valparaiso (1-7-06)
REBOUNDS.....	16	Morgan, Clayton vs Long Island (12-30-05)
	16	Morgan, Clayton at UMKC (12-3-05)
ASSISTS.....	8	Giles, Brandon vs Hartford (1-28-06)
	7	Giles, Brandon at Liberty (2-13-06)
STEALS.....	5	Sumter, Maurice vs Shenandoah (2-8-06)
	5	Sumter, Maurice at Texas A&M-Corpus Christi (2-4-06)
	5	Sumter, Maurice at Navy (1-17-06)
	5	Butler, Bryan vs Liberty (11-30-05)
BLOCKED SHOTS.....	3	Sumter, Maurice at Texas A&M-Corpus Christi (2-4-06)
	3	Sumter, Maurice at IPFW (1-5-06)
	3	Smith, Dana vs High Point (12-17-05)

Jefferson, Michael at Kansas State (12-5-05)
Butler, Bryan vs Louisiana Tech (11-19-05)
Barrett, Lamar vs James Madison (2-18-06)
Morgan, Clayton at Liberty (2-13-06)
Barrett, Lamar at Texas A&M-Corpus Christi (2-4-06)
Smith, Dana at Savannah State (1-21-06)
Barrett, Lamar at Navy (1-17-06)
Smith, Dana at Valparaiso (1-7-06)
Morgan, Clayton at IPFW (1-5-06)
Williams, Kirk at College of Charleston (12-29-05)
Barrett, Lamar at Kansas State (12-5-05)
Williams, Kirk vs William and Mary (11-28-05)
Morgan, Clayton vs William and Mary (11-28-05)
Smith, Dana vs William and Mary (11-28-05)
Holmes, Darren vs Virginia-Wise (11-26-05)
Williams, Kirk vs Louisiana Tech (11-19-05)
Smith, Dana vs Louisiana Tech (11-19-05)
Smith, Dana at Nebraska (11-18-05)

2005-06 Longwood Men's Basketball
Longwood Individual Game-by-Game (as of Feb 19, 2006)
All games

#00 Holmes, Darren

Opponent	Date	GS	Min	---TOTAL---		---3-PTS---		----REBOUNDS----										Pts	Avg		
				FG-FGA	Pct	3FG-FGA	Pct	FT-FTA	Pct	Off	Def	Tot	Avg	PF	FO	A	TO			Blk	Stl
at Nebraska	11-18-05		2	0-1	.000	0-0	.000	0-0	.000	0	0	0	0.0	0	0	0	0	0	0	0	0.0
vs Louisiana Tech	11-19-05		1	2-2	1.000	0-0	.000	0-0	.000	0	0	0	0.0	1	0	0	0	0	0	4	2.0
VIRGINIA-WISE	11-26-05		7	0-0	.000	0-0	.000	0-0	.000	1	2	3	1.0	5	1	0	2	0	0	0	1.3
at Kansas State	12-5-05		4	0-3	.000	0-0	.000	0-0	.000	1	0	1	1.0	1	0	0	0	0	1	0	1.0
vs #4 Villanova	12-10-05		1	0-1	.000	0-0	.000	0-0	.000	2	0	2	1.2	0	0	1	0	0	0	0	0.8
HIGH POINT	12-17-05		2	0-0	.000	0-0	.000	0-0	.000	0	0	0	1.0	0	0	1	0	0	0	0	0.7
at College of Charlest	12-29-05		2	1-2	.500	0-0	.000	0-0	.000	1	0	1	1.0	0	0	0	0	0	0	2	0.9
at Richmond	1-2-06		1	0-0	.000	0-0	.000	0-0	.000	0	0	0	0.9	0	0	1	0	0	0	0	0.8
at Valparaiso	1-7-06		4	1-3	.333	0-0	.000	0-0	.000	1	1	2	1.0	1	0	0	0	0	0	2	0.9
at Texas A&M-Corpus Ch	2-4-06		4	2-3	.667	0-0	.000	0-0	.000	0	0	0	0.9	0	0	0	0	0	0	4	1.2
SHENANDOAH	2-8-06		2	0-0	.000	0-0	.000	0-0	.000	0	0	0	0.8	0	0	0	0	0	0	0	1.1
at Virginia	2-15-06		10	2-4	.500	0-0	.000	3-4	.750	2	2	4	1.1	3	0	0	0	0	0	7	1.6
Totals.....		0	40	8-19	.421	0-0	.000	3-4	.750	8	5	13	1.1	11	1	3	2	0	1	19	1.6

Games played: 12

Points/game: 1.6

FG Pct: 42.1

FT Pct: 75.0

Rebounds/game: 1.1

Assists/game: 0.3

Turnovers/game: 0.2

Assist/turnover ratio: 1.5

Steals/game: 0.1

2005-06 Longwood Men's Basketball
Longwood Individual Game-by-Game (as of Feb 19, 2006)
All games

#01 Morgan, Clayton

Opponent	Date	GS	Min	---TOTAL---		---3-PTS---		----REBOUNDS----										Pts	Avg		
				FG-FGA	Pct	3FG-FGA	Pct	FT-FTA	Pct	Off	Def	Tot	Avg	PF	FO	A	TO			Blk	Stl
at Nebraska	11-18-05		21	1-5	.200	0-2	.000	0-0	.000	0	2	2	2.0	2	0	0	1	0	0	2	2.0
vs Louisiana Tech	11-19-05		16	0-2	.000	0-0	.000	0-0	.000	0	0	0	1.0	0	0	1	4	1	1	0	1.0
vs Yale	11-20-05		20	2-8	.250	1-3	.333	0-0	.000	3	5	8	3.3	2	0	3	1	0	0	5	2.3
VIRGINIA-WISE	11-26-05		17	5-7	.714	1-1	1.000	2-3	.667	1	7	8	4.5	2	0	2	1	0	1	13	5.0
WILLIAM AND MARY	11-28-05	*	31	3-8	.375	1-1	1.000	3-5	.600	2	7	9	5.4	5	1	0	0	1	1	10	6.0
LIBERTY	11-30-05	*	31	3-6	.500	0-1	.000	6-7	.857	3	4	7	5.7	2	0	1	2	0	0	12	7.0
at UMKC	12-3-05	*	29	4-14	.286	0-1	.000	5-5	1.000	10	6	16	7.1	2	0	0	1	0	0	13	7.9
at Kansas State	12-5-05	*	27	3-8	.375	0-1	.000	2-6	.333	5	4	9	7.4	2	0	1	4	0	2	8	7.9
vs #4 Villanova	12-10-05	*	30	3-11	.273	0-0	.000	6-8	.750	5	3	8	7.4	1	0	1	2	0	0	12	8.3
HIGH POINT	12-17-05	*	29	4-9	.444	0-2	.000	0-0	.000	2	13	15	8.2	1	0	1	3	0	1	8	8.3
VALPARAISO	12-20-05	*	35	9-18	.500	1-2	.500	6-7	.857	6	7	13	8.6	2	0	5	2	0	0	25	9.8
at VCU	12-22-05	*	31	1-11	.091	0-0	.000	2-4	.500	3	4	7	8.5	2	0	1	2	0	1	4	9.3
at College of Charlest	12-29-05		22	2-10	.200	0-1	.000	0-0	.000	4	2	6	8.3	0	0	0	4	1	0	4	8.9
vs Long Island	12-30-05		31	7-12	.583	0-0	.000	2-3	.667	5	11	16	8.9	3	0	3	4	0	1	16	9.4
at Richmond	1-2-06	*	30	3-9	.333	1-1	1.000	2-2	1.000	4	1	5	8.6	2	0	0	3	0	0	9	9.4
at IPFW	1-5-06	*	31	6-11	.545	0-0	.000	1-1	1.000	2	5	7	8.5	5	1	2	2	0	2	13	9.6
at Valparaiso	1-7-06	*	20	4-7	.571	0-0	.000	0-0	.000	1	4	5	8.3	1	0	0	3	0	0	8	9.5
at Navy	1-17-06	*	29	3-7	.429	1-1	1.000	8-11	.727	5	3	8	8.3	2	0	0	3	1	3	15	9.8
at Savannah State	1-21-06	*	34	3-8	.375	0-0	.000	12-17	.706	2	8	10	8.4	1	0	3	2	0	2	18	10.3
HARTFORD	1-28-06	*	41	6-14	.429	1-2	.500	7-8	.875	8	4	12	8.6	3	0	5	2	0	2	20	10.8
IPFW	1-30-06	*	35	4-10	.400	0-0	.000	4-4	1.000	3	6	9	8.6	2	0	2	1	0	1	12	10.8
NORTH CAROLINA A&T	2-2-06	*	37	9-11	.818	0-0	.000	10-12	.833	3	6	9	8.6	2	0	3	2	1	1	28	11.6
at Texas A&M-Corpus Ch	2-4-06	*	29	4-8	.500	0-1	.000	6-6	1.000	2	4	6	8.5	3	0	1	2	1	1	14	11.7
SHENANDOAH	2-8-06	*	31	6-10	.600	0-1	.000	1-5	.200	2	7	9	8.5	3	0	2	0	0	1	13	11.8
at Liberty	2-13-06	*	36	4-8	.500	0-1	.000	6-11	.545	4	5	9	8.5	5	1	2	4	0	0	14	11.8
at Virginia	2-15-06	*	32	5-10	.500	0-1	.000	1-4	.250	0	9	9	8.5	1	0	2	4	0	1	11	11.8
JAMES MADISON	2-18-06	*	33	5-15	.333	1-1	1.000	3-4	.750	3	6	9	8.6	4	0	2	1	0	0	14	11.9
Totals.....		21	788	109-257	.424	8-24	.333	95-133	.714	88	143	231	8.6	60	3	43	60	6	22	321	11.9

Games played: 27

Points/game: 11.9

FG Pct: 42.4

3FG Pct: 33.3

FT Pct: 71.4

Rebounds/game: 8.6

Assists/game: 1.6

Turnovers/game: 2.2

Assist/turnover ratio: 0.7

Steals/game: 0.8

Blocks/game: 0.2

2005-06 Longwood Men's Basketball
Longwood Individual Game-by-Game (as of Feb 19, 2006)
All games

#03 Williams, Kirk

Opponent	Date	GS	Min	---TOTAL---		---3-PTS---		----REBOUNDS----										Pts	Avg		
				FG-FGA	Pct	3FG-FGA	Pct	FT-FTA	Pct	Off	Def	Tot	Avg	PF	FO	A	TO			Blk	Stl
at Nebraska	11-18-05		15	2-4	.500	0-0	.000	1-2	.500	5	1	6	6.0	2	0	0	1	0	0	5	5.0
vs Louisiana Tech	11-19-05		17	4-4	1.000	0-0	.000	5-6	.833	1	2	3	4.5	5	1	1	0	0	2	13	9.0
vs Yale	11-20-05		15	3-6	.500	0-0	.000	2-3	.667	2	1	3	4.0	4	0	0	2	0	1	8	8.7
VIRGINIA-WISE	11-26-05		21	2-5	.400	0-0	.000	3-6	.500	6	3	9	5.3	0	0	1	0	0	1	7	8.3
WILLIAM AND MARY	11-28-05		15	1-4	.250	0-0	.000	1-2	.500	1	2	3	4.8	5	1	1	4	1	0	3	7.2
LIBERTY	11-30-05		17	7-9	.778	0-0	.000	3-6	.500	1	2	3	4.5	3	0	0	0	0	1	17	8.8
at UMKC	12-3-05		22	3-8	.375	0-0	.000	4-4	1.000	5	2	7	4.9	3	0	0	0	0	1	10	9.0
at Kansas State	12-5-05		21	2-5	.400	0-0	.000	2-4	.500	2	2	4	4.8	1	0	2	1	1	1	6	8.6
vs #4 Villanova	12-10-05		21	4-6	.667	0-0	.000	1-2	.500	1	5	6	4.9	4	0	1	0	0	0	9	8.7
HIGH POINT	12-17-05		13	2-8	.250	0-0	.000	1-2	.500	2	1	3	4.7	3	0	1	0	0	0	5	8.3
VALPARAISO	12-20-05		20	3-7	.429	0-0	.000	1-1	1.000	3	1	4	4.6	1	0	2	1	0	2	7	8.2
at VCU	12-22-05		25	7-8	.875	0-0	.000	3-6	.500	5	2	7	4.8	2	0	2	1	0	1	17	8.9
at College of Charlest	12-29-05		18	3-6	.500	0-0	.000	2-5	.400	2	1	3	4.7	5	1	1	1	0	0	8	8.8
vs Long Island	12-30-05		16	5-7	.714	0-0	.000	0-0	.000	0	2	2	4.5	4	0	3	1	0	0	10	8.9
at Richmond	1-2-06		25	3-8	.375	0-0	.000	0-1	.000	4	0	4	4.5	2	0	3	2	0	1	6	8.7
at IPFW	1-5-06		20	2-8	.250	0-0	.000	0-0	.000	1	2	3	4.4	4	0	0	0	0	0	4	8.4
at Valparaiso	1-7-06		17	1-5	.200	0-0	.000	0-0	.000	1	2	3	4.3	4	0	2	1	0	0	2	8.1
at Navy	1-17-06		18	4-5	.800	0-0	.000	0-2	.000	5	1	6	4.4	1	0	1	3	0	0	8	8.1
at Savannah State	1-21-06		22	2-3	.667	0-0	.000	7-15	.467	1	3	4	4.4	4	0	1	5	0	0	11	8.2
HARTFORD	1-28-06		18	3-4	.750	0-0	.000	0-1	.000	2	4	6	4.5	1	0	2	1	0	0	6	8.1
IPFW	1-30-06		14	1-2	.500	0-0	.000	0-0	.000	0	3	3	4.4	4	0	1	3	0	1	2	7.8
NORTH CAROLINA A&T	2-2-06		17	0-2	.000	0-0	.000	0-0	.000	1	4	5	4.4	3	0	1	2	0	0	0	7.5
at Texas A&M-Corpus Ch	2-4-06		23	3-3	1.000	0-0	.000	1-2	.500	0	2	2	4.3	3	0	1	3	1	1	7	7.4
SHENANDOAH	2-8-06		18	3-5	.600	0-0	.000	5-6	.833	0	0	0	4.1	3	0	0	0	0	1	11	7.6
at Liberty	2-13-06		22	4-4	1.000	0-0	.000	2-4	.500	1	4	5	4.2	2	0	1	2	0	0	10	7.7
at Virginia	2-15-06		28	4-6	.667	0-0	.000	3-4	.750	2	4	6	4.2	4	0	0	3	0	1	11	7.8
JAMES MADISON	2-18-06		19	0-0	.000	0-0	.000	2-2	1.000	0	3	3	4.2	3	0	1	4	0	0	2	7.6
Totals.....		0	517	78-142	.549	0-0	.000	49-86	.570	54	59	113	4.2	80	3	29	41	3	15	205	7.6

Games played: 27

Points/game: 7.6

FG Pct: 54.9

FT Pct: 57.0

Rebounds/game: 4.2

Assists/game: 1.1

Turnovers/game: 1.5

Assist/turnover ratio: 0.7

Steals/game: 0.6

Blocks/game: 0.1

2005-06 Longwood Men's Basketball
Longwood Individual Game-by-Game (as of Feb 19, 2006)
All games

#10 Giles, Brandon

Opponent	Date	GS	Min	---TOTAL---		---3-PTS---		----REBOUNDS-----										Pts	Avg		
				FG-FGA	Pct	3FG-FGA	Pct	FT-FTA	Pct	Off	Def	Tot	Avg	PF	FO	A	TO			Blk	Stl
at Nebraska	11-18-05		20	0-3	.000	0-2	.000	0-0	.000	0	2	2	2.0	2	0	5	3	0	0	0	0.0
vs Louisiana Tech	11-19-05		13	0-2	.000	0-2	.000	0-0	.000	0	1	1	1.5	0	0	3	0	0	0	0	0.0
vs Yale	11-20-05		17	2-4	.500	2-4	.500	0-0	.000	0	3	3	2.0	4	0	1	0	0	0	6	2.0
VIRGINIA-WISE	11-26-05		11	1-5	.200	1-5	.200	0-0	.000	0	0	0	1.5	4	0	2	0	0	0	3	2.3
WILLIAM AND MARY	11-28-05		12	0-1	.000	0-1	.000	0-0	.000	0	1	1	1.4	2	0	1	1	0	0	0	1.8
LIBERTY	11-30-05		14	0-0	.000	0-0	.000	2-2	1.000	0	0	0	1.2	2	0	3	0	0	0	2	1.8
at UMKC	12-3-05		15	1-2	.500	0-1	.000	0-0	.000	0	1	1	1.1	0	0	1	2	0	0	2	1.9
at Kansas State	12-5-05		11	0-2	.000	0-2	.000	2-2	1.000	0	1	1	1.1	1	0	1	2	0	0	2	1.9
vs #4 Villanova	12-10-05		10	0-1	.000	0-1	.000	0-0	.000	0	1	1	1.1	3	0	3	2	0	0	0	1.7
HIGH POINT	12-17-05		11	0-3	.000	0-1	.000	0-0	.000	0	0	0	1.0	2	0	1	1	0	1	0	1.5
VALPARAISO	12-20-05	*	18	0-2	.000	0-2	.000	0-0	.000	0	1	1	1.0	4	0	1	1	0	1	0	1.4
at VCU	12-22-05	*	20	0-0	.000	0-0	.000	0-0	.000	0	2	2	1.1	2	0	4	4	0	0	0	1.3
at College of Charlest	12-29-05	*	18	0-1	.000	0-1	.000	0-0	.000	0	3	3	1.2	1	0	2	0	0	1	0	1.2
vs Long Island	12-30-05	*	26	1-1	1.000	0-0	.000	1-2	.500	0	0	0	1.1	2	0	3	3	0	0	3	1.3
at Richmond	1-2-06		17	1-1	1.000	1-1	1.000	0-0	.000	0	2	2	1.2	0	0	2	0	0	0	3	1.4
at IPFW	1-5-06	*	34	0-1	.000	0-1	.000	1-2	.500	0	2	2	1.3	2	0	4	2	0	0	1	1.4
at Valparaiso	1-7-06	*	16	4-6	.667	2-4	.500	3-3	1.000	0	0	0	1.2	2	0	1	2	0	0	13	2.1
at Navy	1-17-06	*	36	0-6	.000	0-4	.000	2-2	1.000	0	1	1	1.2	3	0	5	4	0	1	2	2.1
at Savannah State	1-21-06	*	38	1-5	.200	1-3	.333	1-2	.500	0	2	2	1.2	2	0	6	2	0	0	4	2.2
HARTFORD	1-28-06	*	45	3-9	.333	3-6	.500	0-0	.000	0	2	2	1.3	2	0	8	4	0	2	9	2.5
IPFW	1-30-06	*	35	0-5	.000	0-3	.000	3-4	.750	1	3	4	1.4	2	0	5	1	0	0	3	2.5
NORTH CAROLINA A&T	2-2-06	*	37	1-7	.143	0-5	.000	2-2	1.000	1	3	4	1.5	3	0	5	3	0	0	4	2.6
at Texas A&M-Corpus Ch	2-4-06	*	34	0-8	.000	0-3	.000	0-0	.000	0	3	3	1.6	4	0	2	4	0	1	0	2.5
SHENANDOAH	2-8-06	*	34	4-6	.667	4-5	.800	3-4	.750	1	1	2	1.6	3	0	6	4	0	1	15	3.0
at Liberty	2-13-06	*	40	2-6	.333	2-6	.333	0-0	.000	1	2	3	1.6	4	0	7	3	0	1	6	3.1
at Virginia	2-15-06	*	14	1-1	1.000	1-1	1.000	0-0	.000	0	0	0	1.6	2	0	0	0	0	0	3	3.1
JAMES MADISON	2-18-06	*	40	5-5	1.000	5-5	1.000	6-8	.750	0	6	6	1.7	1	0	6	3	0	0	21	3.8
Totals.....		16	636	27-93	.290	22-69	.319	26-33	.788	4	43	47	1.7	59	0	88	51	0	9	102	3.8

Games played: 27

Points/game: 3.8

FG Pct: 29.0

3FG Pct: 31.9

FT Pct: 78.8

Rebounds/game: 1.7

Assists/game: 3.3

Turnovers/game: 1.9

Assist/turnover ratio: 1.7

Steals/game: 0.3

2005-06 Longwood Men's Basketball
Longwood Individual Game-by-Game (as of Feb 19, 2006)
All games

#15 Rowe, Joel

Opponent	Date	GS	Min	---TOTAL---		---3-PTS---		---FT-FTA---		-----REBOUNDS-----										Pts	Avg
				FG-FGA	Pct	3FG-FGA	Pct	FT-FTA	Pct	Off	Def	Tot	Avg	PF	FO	A	TO	Blk	Stl		
at Nebraska	11-18-05		1	0-1	.000	0-1	.000	0-0	.000	0	0	0	0.0	1	0	0	0	0	0	0	0.0
vs Louisiana Tech	11-19-05		2	1-1	1.000	1-1	1.000	0-0	.000	0	0	0	0.0	0	0	1	0	0	0	3	1.5
VIRGINIA-WISE	11-26-05		11	0-1	.000	0-1	.000	0-0	.000	0	0	0	0.0	2	0	1	1	0	0	0	1.0
at Kansas State	12-5-05		4	1-1	1.000	0-0	.000	0-0	.000	1	0	1	0.3	1	0	1	1	0	0	2	1.3
vs #4 Villanova	12-10-05		2	0-1	.000	0-0	.000	0-0	.000	0	0	0	0.2	0	0	1	0	0	0	0	1.0
HIGH POINT	12-17-05		2	0-1	.000	0-1	.000	0-0	.000	0	0	0	0.2	0	0	0	0	0	0	0	0.8
at College of Charlest	12-29-05		2	0-0	.000	0-0	.000	0-0	.000	0	0	0	0.1	0	0	0	0	0	1	0	0.7
at Richmond	1-2-06	*	6	0-0	.000	0-0	.000	0-0	.000	0	0	0	0.1	1	0	0	1	0	1	0	0.6
at Valparaiso	1-7-06		4	1-1	1.000	1-1	1.000	0-0	.000	0	0	0	0.1	1	0	1	0	0	1	3	0.9
at Savannah State	1-21-06		2	0-1	.000	0-0	.000	0-0	.000	0	0	0	0.1	0	0	0	0	0	0	0	0.8
IPFW	1-30-06		5	1-2	.500	0-1	.000	0-0	.000	0	0	0	0.1	0	0	0	1	0	0	2	0.9
NORTH CAROLINA A&T	2-2-06		3	0-0	.000	0-0	.000	0-0	.000	0	1	1	0.2	0	0	0	0	0	0	0	0.8
at Texas A&M-Corpus Ch	2-4-06		6	0-1	.000	0-0	.000	2-2	1.000	1	0	1	0.2	1	0	1	3	0	0	2	0.9
SHENANDOAH	2-8-06		6	0-0	.000	0-0	.000	0-0	.000	0	0	0	0.2	1	0	0	3	0	1	0	0.9
at Virginia	2-15-06		16	0-2	.000	0-2	.000	1-2	.500	1	0	1	0.3	2	0	2	1	0	1	1	0.9
Totals.....		1	72	4-13	.308	2-8	.250	3-4	.750	3	1	4	0.3	10	0	8	11	0	5	13	0.9

Games played: 15

Points/game: 0.9

FG Pct: 30.8

3FG Pct: 25.0

FT Pct: 75.0

Rebounds/game: 0.3

Assists/game: 0.5

Turnovers/game: 0.7

Assist/turnover ratio: 0.7

Steals/game: 0.3

2005-06 Longwood Men's Basketball
Longwood Individual Game-by-Game (as of Feb 19, 2006)
All games

#22 Smith, Dana

Opponent	Date	GS	Min	---TOTAL---		---3-PTS---		----REBOUNDS----										Pts	Avg		
				FG-FGA	Pct	3FG-FGA	Pct	FT-FTA	Pct	Off	Def	Tot	Avg	PF	FO	A	TO			Blk	Stl
at Nebraska	11-18-05		15	4-5	.800	4-4	1.000	0-0	.000	0	2	2	2.0	5	1	1	1	0	0	12	12.0
vs Louisiana Tech	11-19-05		10	1-4	.250	0-1	.000	0-0	.000	0	1	1	1.5	5	1	0	1	0	0	2	7.0
vs Yale	11-20-05		20	3-6	.500	0-1	.000	2-5	.400	1	3	4	2.3	1	0	1	3	1	1	8	7.3
VIRGINIA-WISE	11-26-05		21	6-6	1.000	1-1	1.000	2-2	1.000	4	5	9	4.0	1	0	3	0	1	3	15	9.3
WILLIAM AND MARY	11-28-05		17	3-3	1.000	0-0	.000	1-2	.500	0	0	0	3.2	5	1	1	1	1	0	7	8.8
LIBERTY	11-30-05		17	0-5	.000	0-1	.000	1-2	.500	0	1	1	2.8	3	0	0	3	0	0	1	7.5
at UMKC	12-3-05		13	1-3	.333	0-2	.000	2-2	1.000	1	1	2	2.7	3	0	0	0	0	0	4	7.0
at Kansas State	12-5-05		23	1-4	.250	0-1	.000	0-0	.000	1	3	4	2.9	1	0	4	2	2	0	2	6.4
vs #4 Villanova	12-10-05		17	2-7	.286	2-2	1.000	0-0	.000	2	2	4	3.0	1	0	0	0	0	0	6	6.3
HIGH POINT	12-17-05		22	1-5	.200	0-1	.000	4-4	1.000	1	2	3	3.0	3	0	1	1	3	0	6	6.3
VALPARAISO	12-20-05		23	4-9	.444	0-1	.000	3-4	.750	0	3	3	3.0	4	0	0	2	0	0	11	6.7
at VCU	12-22-05	*	29	6-10	.600	0-1	.000	4-7	.571	2	4	6	3.3	4	0	0	3	0	2	16	7.5
at College of Charlest	12-29-05		25	3-7	.429	0-1	.000	0-0	.000	1	4	5	3.4	3	0	0	0	1	0	6	7.4
vs Long Island	12-30-05		25	4-10	.400	1-2	.500	4-7	.571	1	5	6	3.6	3	0	4	4	0	2	13	7.8
at Richmond	1-2-06	*	27	4-8	.500	1-4	.250	2-4	.500	1	5	6	3.7	0	0	0	1	1	1	11	8.0
at IPFW	1-5-06		17	4-4	1.000	2-2	1.000	0-0	.000	0	2	2	3.6	1	0	2	1	0	2	10	8.1
at Valparaiso	1-7-06		25	3-6	.500	0-1	.000	0-2	.000	0	0	0	3.4	5	1	1	2	0	3	6	8.0
at Navy	1-17-06	*	25	3-8	.375	0-3	.000	3-5	.600	5	4	9	3.7	4	0	2	5	2	0	9	8.1
at Savannah State	1-21-06	*	23	2-5	.400	0-2	.000	1-6	.167	0	3	3	3.7	5	1	0	5	1	0	5	7.9
HARTFORD	1-28-06	*	40	3-11	.273	1-4	.250	2-4	.500	2	3	5	3.8	2	0	4	1	1	1	9	8.0
IPFW	1-30-06	*	33	2-11	.182	0-2	.000	4-4	1.000	5	5	10	4.0	2	0	1	1	1	1	8	8.0
NORTH CAROLINA A&T	2-2-06	*	35	7-11	.636	2-5	.400	3-4	.750	2	6	8	4.2	1	0	3	4	0	2	19	8.5
at Texas A&M-Corpus Ch	2-4-06	*	30	4-9	.444	2-5	.400	2-7	.286	0	2	2	4.1	3	0	2	3	0	2	12	8.6
SHENANDOAH	2-8-06	*	32	7-10	.700	1-4	.250	2-2	1.000	6	4	10	4.4	4	0	4	2	2	0	17	9.0
at Liberty	2-13-06	*	35	4-10	.400	2-4	.500	4-5	.800	0	5	5	4.4	4	0	0	1	1	1	14	9.2
at Virginia	2-15-06	*	34	3-13	.231	1-4	.250	3-7	.429	4	3	7	4.5	1	0	0	1	0	0	10	9.2
JAMES MADISON	2-18-06	*	29	0-3	.000	0-3	.000	2-2	1.000	0	3	3	4.4	4	0	3	0	1	1	2	8.9
Totals.....		12	662	85-193	.440	20-62	.323	51-87	.586	39	81	120	4.4	78	5	37	48	19	22	241	8.9

Games played: 27

Points/game: 8.9

FG Pct: 44.0

3FG Pct: 32.3

FT Pct: 58.6

Rebounds/game: 4.4

Assists/game: 1.4

Turnovers/game: 1.8

Assist/turnover ratio: 0.8

Steals/game: 0.8

Blocks/game: 0.7

2005-06 Longwood Men's Basketball
Longwood Individual Game-by-Game (as of Feb 19, 2006)
All games

#30 Larson, Jon

Opponent	Date	GS	Min	---TOTAL---		---3-PTS---		----REBOUNDS----										Pts	Avg		
				FG-FGA	Pct	3FG-FGA	Pct	FT-FTA	Pct	Off	Def	Tot	Avg	PF	FO	A	TO			Blk	Stl
at Texas A&M-Corpus Ch	2-4-06		4	1-2	.500	0-0	.000	1-4	.250	0	0	0	0.0	0	0	0	0	0	0	3	3.0
SHENANDOAH	2-8-06		1	0-0	.000	0-0	.000	0-0	.000	0	1	1	0.5	0	0	0	0	0	0	0	1.5
at Virginia	2-15-06		4	0-2	.000	0-0	.000	1-2	.500	0	0	0	0.3	1	0	0	1	0	0	1	1.3
Totals.....		0	9	1-4	.250	0-0	.000	2-6	.333	0	1	1	0.3	1	0	0	1	0	0	4	1.3

Games played: 3

Rebounds/game: 0.3

Points/game: 1.3

Turnovers/game: 0.3

FG Pct: 25.0

FT Pct: 33.3

2005-06 Longwood Men's Basketball
Longwood Individual Game-by-Game (as of Feb 19, 2006)
All games

#32 Pistoljevic, Husein

Opponent	Date	GS	Min	---TOTAL---		---3-PTS---		----REBOUNDS----										Pts	Avg		
				FG-FGA	Pct	3FG-FGA	Pct	FT-FTA	Pct	Off	Def	Tot	Avg	PF	FO	A	TO			Blk	Stl
at Nebraska	11-18-05		13	1-3	.333	1-3	.333	2-2	1.000	0	3	3	3.0	1	0	0	1	0	1	5	5.0
vs Louisiana Tech	11-19-05		9	0-1	.000	0-0	.000	0-0	.000	0	0	0	1.5	1	0	0	2	0	0	0	2.5
vs Yale	11-20-05		8	1-2	.500	1-2	.500	0-0	.000	0	0	0	1.0	1	0	1	0	0	0	3	2.7
VIRGINIA-WISE	11-26-05		18	4-9	.444	2-7	.286	0-0	.000	0	0	0	0.8	0	0	1	1	0	0	10	4.5
WILLIAM AND MARY	11-28-05		8	0-0	.000	0-0	.000	0-0	.000	0	0	0	0.6	0	0	0	0	0	0	0	3.6
at UMKC	12-3-05		7	1-3	.333	1-3	.333	0-0	.000	0	0	0	0.5	0	0	0	0	0	0	3	3.5
at Kansas State	12-5-05		12	2-6	.333	1-5	.200	0-0	.000	1	3	4	1.0	2	0	0	0	0	0	5	3.7
vs #4 Villanova	12-10-05		2	1-1	1.000	1-1	1.000	0-0	.000	0	0	0	0.9	0	0	0	0	0	0	3	3.6
HIGH POINT	12-17-05		11	3-5	.600	1-2	.500	2-2	1.000	0	0	0	0.8	0	0	0	0	0	1	9	4.2
VALPARAISO	12-20-05		9	0-3	.000	0-3	.000	0-0	.000	0	1	1	0.8	3	0	0	0	0	0	0	3.8
at VCU	12-22-05		21	2-3	.667	2-3	.667	0-0	.000	0	3	3	1.0	1	0	1	2	0	2	6	4.0
at College of Charlest	12-29-05		10	2-8	.250	2-6	.333	0-0	.000	1	0	1	1.0	1	0	1	1	0	1	6	4.2
vs Long Island	12-30-05		10	1-4	.250	1-4	.250	0-0	.000	0	1	1	1.0	3	0	2	0	0	0	3	4.1
at Richmond	1-2-06		10	0-2	.000	0-1	.000	0-0	.000	1	1	2	1.1	2	0	0	2	0	0	0	3.8
at Valparaiso	1-7-06		12	3-7	.429	3-7	.429	0-0	.000	1	2	3	1.2	1	0	1	1	0	0	9	4.1
at Navy	1-17-06		16	3-10	.300	2-8	.250	0-0	.000	0	1	1	1.2	1	0	0	1	0	1	8	4.4
at Savannah State	1-21-06		16	1-4	.250	0-3	.000	0-0	.000	0	3	3	1.3	2	0	0	1	0	0	2	4.2
HARTFORD	1-28-06		8	3-3	1.000	2-2	1.000	0-0	.000	0	0	0	1.2	2	0	0	0	0	0	8	4.4
IPFW	1-30-06		9	1-4	.250	1-3	.333	0-0	.000	1	1	2	1.3	2	0	0	0	0	0	3	4.4
NORTH CAROLINA A&T	2-2-06		5	1-3	.333	1-3	.333	2-2	1.000	0	0	0	1.2	1	0	0	0	0	0	5	4.4
at Texas A&M-Corpus Ch	2-4-06		7	0-4	.000	0-4	.000	0-0	.000	0	1	1	1.2	1	0	0	0	0	1	0	4.2
SHENANDOAH	2-8-06		13	0-5	.000	0-5	.000	0-0	.000	0	1	1	1.2	0	0	2	0	0	0	0	4.0
at Liberty	2-13-06		4	0-2	.000	0-2	.000	0-0	.000	0	0	0	1.1	1	0	1	1	0	0	0	3.8
at Virginia	2-15-06	*	24	2-8	.250	0-6	.000	0-0	.000	1	1	2	1.2	2	0	0	3	0	0	4	3.8
JAMES MADISON	2-18-06		5	0-0	.000	0-0	.000	0-0	.000	0	0	0	1.1	0	0	0	0	0	0	0	3.7
Totals.....		1	267	32-100	.320	22-83	.265	6-6	1.000	6	22	28	1.1	28	0	10	16	0	7	92	3.7

Games played: 25

Points/game: 3.7

FG Pct: 32.0

3FG Pct: 26.5

FT Pct: 100.0

Rebounds/game: 1.1

Assists/game: 0.4

Turnovers/game: 0.6

Assist/turnover ratio: 0.6

Steals/game: 0.3

2005-06 Longwood Men's Basketball
Longwood Individual Game-by-Game (as of Feb 19, 2006)
All games

#42 Kosmo, Chad

Opponent	Date	GS	Min	---TOTAL---		---3-PTS---		----REBOUNDS----										Pts	Avg		
				FG-FGA	Pct	3FG-FGA	Pct	FT-FTA	Pct	Off	Def	Tot	Avg	PF	FO	A	TO			Blk	Stl
at Nebraska	11-18-05	*	14	0-2	.000	0-0	.000	2-6	.333	0	3	3	3.0	4	0	0	1	0	0	2	2.0
vs Louisiana Tech	11-19-05	*	15	0-0	.000	0-0	.000	0-0	.000	1	2	3	3.0	2	0	3	1	0	1	0	1.0
vs Yale	11-20-05	*	15	1-3	.333	0-0	.000	0-2	.000	0	9	9	5.0	4	0	1	4	0	0	2	1.3
VIRGINIA-WISE	11-26-05	*	10	3-5	.600	0-0	.000	0-0	.000	2	1	3	4.5	0	0	0	1	2	0	6	2.5
HIGH POINT	12-17-05		1	0-0	.000	0-0	.000	0-0	.000	0	0	0	3.6	0	0	0	0	0	0	0	2.0
at College of Charlest	12-29-05	*	14	4-9	.444	0-0	.000	0-3	.000	3	7	10	4.7	0	0	1	0	1	0	8	3.0
vs Long Island	12-30-05	*	10	1-3	.333	0-0	.000	0-0	.000	1	3	4	4.6	3	0	0	2	1	0	2	2.9
at Richmond	1-2-06		5	0-0	.000	0-0	.000	0-0	.000	0	0	0	4.0	0	0	1	0	0	0	0	2.5
at IPFW	1-5-06		3	0-0	.000	0-0	.000	0-0	.000	0	0	0	3.6	2	0	0	0	0	0	0	2.2
at Valparaíso	1-7-06		15	1-6	.167	0-0	.000	0-2	.000	3	1	4	3.6	3	0	1	1	0	0	2	2.2
at Navy	1-17-06		10	0-2	.000	0-0	.000	0-0	.000	0	2	2	3.5	1	0	1	0	2	0	0	2.0
at Savannah State	1-21-06		5	0-0	.000	0-0	.000	0-0	.000	0	1	1	3.3	0	0	1	0	0	0	0	1.8
IPFW	1-30-06		3	1-1	1.000	0-0	.000	0-0	.000	0	0	0	3.0	0	0	0	0	0	0	2	1.8
at Texas A&M-Corpus Ch	2-4-06		9	2-2	1.000	0-0	.000	0-0	.000	1	1	2	2.9	3	0	0	1	0	0	4	2.0
SHENANDOAH	2-8-06		3	0-0	.000	0-0	.000	1-4	.250	2	1	3	2.9	0	0	1	1	0	0	1	1.9
at Virginia	2-15-06		8	1-2	.500	0-0	.000	0-0	.000	0	1	1	2.8	3	0	0	3	2	1	2	1.9
JAMES MADISON	2-18-06		3	0-0	.000	0-0	.000	0-0	.000	0	0	0	2.6	0	0	0	1	0	0	0	1.8
Totals.....		6	143	14-35	.400	0-0	.000	3-17	.176	13	32	45	2.6	25	0	10	16	8	2	31	1.8

Games played: 17

Points/game: 1.8

FG Pct: 40.0

FT Pct: 17.6

Rebounds/game: 2.6

Assists/game: 0.6

Turnovers/game: 0.9

Assist/turnover ratio: 0.6

Steals/game: 0.1

Blocks/game: 0.5

2005-06 Longwood Men's Basketball
Longwood Individual Game-by-Game (as of Feb 19, 2006)
All games

#45 Sumter, Maurice

Opponent	Date	GS	Min	---TOTAL---		---3-PTS---		----REBOUNDS----										PF	FO	A	TO	Blk	Stl	Pts	Avg
				FG-FGA	Pct	3FG-FGA	Pct	FT-FTA	Pct	Off	Def	Tot	Avg												
at Nebraska	11-18-05	*	34	7-15	.467	3-5	.600	0-0	.000	1	2	3	3.0	2	0	1	2	0	1	17	17.0				
vs Louisiana Tech	11-19-05	*	36	5-10	.500	1-4	.250	0-0	.000	1	7	8	5.5	2	0	2	2	0	1	11	14.0				
vs Yale	11-20-05	*	34	4-12	.333	0-3	.000	3-4	.750	1	1	2	4.3	4	0	5	2	2	3	11	13.0				
VIRGINIA-WISE	11-26-05	*	22	3-9	.333	0-2	.000	0-0	.000	2	3	5	4.5	2	0	4	1	1	3	6	11.3				
WILLIAM AND MARY	11-28-05	*	30	4-11	.364	0-3	.000	3-4	.750	1	4	5	4.6	4	0	2	5	0	3	11	11.2				
LIBERTY	11-30-05	*	34	6-12	.500	0-0	.000	3-4	.750	2	7	9	5.3	1	0	0	4	0	0	15	11.8				
at UMKC	12-3-05	*	32	4-6	.667	1-2	.500	1-2	.500	1	3	4	5.1	2	0	3	2	1	3	10	11.6				
at Kansas State	12-5-05	*	25	1-10	.100	1-1	1.000	3-4	.750	3	3	6	5.3	1	0	0	3	0	1	6	10.9				
vs #4 Villanova	12-10-05	*	31	7-12	.583	1-1	1.000	2-2	1.000	5	3	8	5.6	3	0	1	3	2	2	17	11.6				
HIGH POINT	12-17-05	*	30	3-7	.429	0-0	.000	2-2	1.000	1	4	5	5.5	1	0	1	3	2	0	8	11.2				
VALPARAISO	12-20-05	*	36	9-13	.692	1-3	.333	6-6	1.000	4	3	7	5.6	0	0	5	5	0	1	25	12.5				
at VCU	12-22-05	*	31	6-12	.500	1-2	.500	2-2	1.000	4	0	4	5.5	1	0	0	5	2	0	15	12.7				
at College of Charlest	12-29-05	*	26	3-10	.300	1-3	.333	0-0	.000	1	3	4	5.4	1	0	3	3	0	2	7	12.2				
vs Long Island	12-30-05	*	26	7-10	.700	1-1	1.000	0-0	.000	0	6	6	5.4	3	0	5	1	0	2	15	12.4				
at Richmond	1-2-06	*	31	7-11	.636	1-1	1.000	1-1	1.000	2	3	5	5.4	4	0	2	3	0	2	16	12.7				
at IPFW	1-5-06	*	38	5-12	.417	1-3	.333	2-4	.500	1	4	5	5.4	1	0	5	2	3	1	13	12.7				
at Valparaiso	1-7-06	*	32	4-7	.571	1-2	.500	8-8	1.000	1	2	3	5.2	1	0	4	2	0	1	17	12.9				
at Navy	1-17-06	*	38	9-23	.391	0-5	.000	1-1	1.000	3	4	7	5.3	1	0	2	4	2	5	19	13.3				
at Savannah State	1-21-06	*	37	9-15	.600	2-3	.667	2-2	1.000	2	3	5	5.3	1	0	3	4	2	2	22	13.7				
HARTFORD	1-28-06	*	42	9-16	.563	1-3	.333	4-7	.571	2	2	4	5.3	2	0	2	3	1	1	23	14.2				
IPFW	1-30-06	*	40	12-16	.750	3-5	.600	1-2	.500	0	7	7	5.3	0	0	2	1	0	0	28	14.9				
NORTH CAROLINA A&T	2-2-06	*	34	6-16	.375	1-2	.500	6-7	.857	0	3	3	5.2	4	0	5	6	1	4	19	15.0				
at Texas A&M-Corpus Ch	2-4-06	*	34	4-11	.364	1-3	.333	4-8	.500	2	2	4	5.2	2	0	5	1	3	5	13	15.0				
SHENANDOAH	2-8-06	*	30	6-16	.375	0-2	.000	3-6	.500	2	4	6	5.2	4	0	3	1	1	5	15	15.0				
at Liberty	2-13-06	*	36	7-13	.538	0-2	.000	2-4	.500	1	7	8	5.3	4	0	2	2	0	1	16	15.0				
JAMES MADISON	2-18-06	*	39	11-16	.688	0-1	.000	5-6	.833	1	4	5	5.3	1	0	2	1	0	2	27	15.5				
Totals.....		26	858	158-321	.492	22-62	.355	64-86	.744	44	94	138	5.3	52	0	69	71	23	51	402	15.5				

Games played: 26

Points/game: 15.5

FG Pct: 49.2

3FG Pct: 35.5

FT Pct: 74.4

Rebounds/game: 5.3

Assists/game: 2.7

Turnovers/game: 2.7

Assist/turnover ratio: 1.0

Steals/game: 2.0

Blocks/game: 0.9

2005-06 Longwood Men's Basketball
Longwood Individual Game-by-Game (as of Feb 19, 2006)
All games

#50 Barrett, Lamar

Opponent	Date	GS	Min	---TOTAL---		---3-PTS---		----REBOUNDS----										Pts	Avg		
				FG-FGA	Pct	3FG-FGA	Pct	FT-FTA	Pct	Off	Def	Tot	Avg	PF	FO	A	TO			Blk	Stl
at Nebraska	11-18-05	*	14	2-2	1.000	1-1	1.000	0-0	.000	3	0	3	3.0	2	0	2	1	0	3	5	5.0
vs Louisiana Tech	11-19-05	*	25	4-7	.571	0-1	.000	0-0	.000	3	2	5	4.0	3	0	4	1	0	0	8	6.5
vs Yale	11-20-05	*	25	2-6	.333	0-1	.000	1-3	.333	2	2	4	4.0	1	0	1	1	1	1	5	6.0
VIRGINIA-WISE	11-26-05	*	22	4-8	.500	0-0	.000	2-4	.500	3	1	4	4.0	3	0	1	0	0	1	10	7.0
WILLIAM AND MARY	11-28-05	*	29	6-12	.500	0-3	.000	1-1	1.000	3	0	3	3.8	2	0	3	2	1	1	13	8.2
LIBERTY	11-30-05	*	23	2-7	.286	0-0	.000	0-0	.000	1	0	1	3.3	2	0	1	1	0	2	4	7.5
at UMKC	12-3-05	*	25	2-4	.500	0-0	.000	1-3	.333	1	2	3	3.3	2	0	1	3	0	1	5	7.1
at Kansas State	12-5-05	*	20	2-6	.333	0-1	.000	0-0	.000	0	3	3	3.3	5	1	2	0	0	0	4	6.8
vs #4 Villanova	12-10-05	*	27	3-5	.600	0-0	.000	1-1	1.000	0	6	6	3.6	4	0	2	3	1	0	7	6.8
HIGH POINT	12-17-05	*	23	6-8	.750	0-0	.000	2-3	.667	1	1	2	3.4	3	0	2	0	0	1	14	7.5
VALPARAISO	12-20-05	*	26	3-9	.333	0-0	.000	1-2	.500	2	3	5	3.5	4	0	0	0	0	2	7	7.5
at VCU	12-22-05	*	22	1-7	.143	0-2	.000	1-2	.500	1	2	3	3.5	3	0	2	0	1	2	3	7.1
at College of Charlest	12-29-05	*	20	2-9	.222	0-3	.000	1-2	.500	1	5	6	3.7	2	0	1	2	0	3	5	6.9
vs Long Island	12-30-05	*	36	3-7	.429	0-1	.000	1-2	.500	3	1	4	3.7	2	0	3	1	0	3	7	6.9
at Richmond	1-2-06	*	27	0-6	.000	0-1	.000	2-2	1.000	0	3	3	3.7	1	0	0	2	0	2	2	6.6
at IPFW	1-5-06	*	34	7-13	.538	2-4	.500	0-1	.000	1	6	7	3.9	4	0	5	1	0	1	16	7.2
at Valparaiso	1-7-06	*	19	0-0	.000	0-0	.000	0-0	.000	0	2	2	3.8	4	0	0	2	1	2	0	6.8
at Navy	1-17-06	*	28	2-4	.500	0-1	.000	0-0	.000	1	1	2	3.7	5	1	3	1	2	0	4	6.6
at Savannah State	1-21-06	*	23	2-5	.400	0-0	.000	3-4	.750	2	1	3	3.6	3	0	2	0	0	0	7	6.6
HARTFORD	1-28-06	*	31	8-11	.727	0-0	.000	2-3	.667	3	2	5	3.7	3	0	2	1	1	1	18	7.2
IPFW	1-30-06	*	26	0-6	.000	0-0	.000	0-0	.000	1	3	4	3.7	4	0	2	1	0	0	0	6.9
NORTH CAROLINA A&T	2-2-06	*	32	3-6	.500	2-3	.667	0-0	.000	1	1	2	3.6	3	0	2	2	0	2	8	6.9
at Texas A&M-Corpus Ch	2-4-06	*	20	1-4	.250	1-1	1.000	2-4	.500	1	1	2	3.6	5	1	0	4	0	0	5	6.8
SHENANDOAH	2-8-06	*	30	6-9	.667	0-1	.000	3-3	1.000	2	4	6	3.7	3	0	2	2	0	3	15	7.2
at Liberty	2-13-06	*	27	1-4	.250	0-0	.000	4-4	1.000	1	5	6	3.8	4	0	1	3	1	2	6	7.1
at Virginia	2-15-06	*	30	1-6	.167	0-2	.000	4-6	.667	0	0	0	3.6	3	0	3	2	1	0	6	7.1
JAMES MADISON	2-18-06	*	32	4-9	.444	0-1	.000	3-4	.750	1	3	4	3.6	5	1	2	2	0	2	11	7.2
Totals.....		27	696	77-180	.428	6-27	.222	35-54	.648	38	60	98	3.6	85	4	49	38	10	35	195	7.2

Games played: 27

Points/game: 7.2

FG Pct: 42.8

3FG Pct: 22.2

FT Pct: 64.8

Rebounds/game: 3.6

Assists/game: 1.8

Turnovers/game: 1.4

Assist/turnover ratio: 1.3

Steals/game: 1.3

Blocks/game: 0.4

This article
brought to you by:

TimesDispatch.com

Richmond Times-Dispatch

NEW: Get [Movie Showtimes](#) in Entertainment

Your Gateway to the
North Carolina Mountains

CLICK
HERE

Lancers long for league invitation

Win over Richmond would help in journey to Div. I membership

BY JOHN O'CONNOR
TIMES-DISPATCH STAFF WRITER
Monday, January 2, 2006

Two things would make 2006 a banner year for Longwood University's basketball program: a win over an established state program and an invitation to join a league.

The Lancers take a crack at the first goal today at the University of Richmond in a 4 p.m. game, the first meeting between the schools.

"If we get a win over somebody like that, it gives you instant credibility," said Mike Gillian, Longwood's third-year coach.

Longwood (3-11) is in the third year of a four-year process to become a Division I member. The Farmville school of 4,350 students, formerly a Division III and Division II member, is in its 30th season of collegiate basketball. Longwood began playing Division I opponents last season and went 1-30.

"This is a much more competitive team than we had a year ago," said Rick Mazzuto, the Lancers athletic director. Longwood this season has wins over Virginia-Wise, Liberty and Long Island, which the Lancers topped 86-69 last Friday in the consolation game of the College of Charleston Classic.

Longwood was founded as the Farmville Female Seminary Association in 1839, and in 1949 became Longwood College. Men enrolled in 1976 and the school earned the university designation in 2002. The move to Division I is being made to raise the visibility and profile of the university. Men's basketball is the primary athletics tool for Longwood image enhancement.

"We really want to establish our identity first in our own region, then along the East Coast, then throughout the country," said Gillian, a former George Mason assistant. "People [nationally] who have known nothing about Longwood, and our program is the first they've heard of it, they say 'Wow, this is great what you guys are doing.'"

"Everybody in the Richmond area, they know Longwood for what it was. They don't know Longwood, especially basketball, for what it is and what it's becoming. That's something we need to expose those people to."

The Lancers' second goal - conference affiliation - will be far more difficult to achieve than a hoops victory. Longwood currently competes as an independent, status it must lose to have a chance at consistent success. For scheduling purposes, for the opportunity to compete for an automatic bid to the NCAA tournament, for rivalries, and for many other reasons, the Lancers are desperately seeking conference affiliation.

"There isn't anything more important for us," Gillian said.

Longwood has applied for membership in the Big South Conference, the nine-team league that includes VMI, Radford and Liberty. Mazzuto said the Big South will make a determination regarding Longwood's application in June. "It's a good conference for us in terms of geographic location and sports that they offer, so I think we match up well with that league in a lot of ways," Mazzuto said.

He is optimistic, as is Gillian, that Longwood will be extended an invitation by the Big South. But the Big South is looking primarily for schools that sponsor Division I-AA football. The Big South has five football-playing members and needs a sixth to qualify for an automatic bid to the I-AA playoffs. Longwood does not have a football team.

Contact staff writer John O'Connor at joconnor@timesdispatch.com or (804) 649-6233.

This story can be found at:

http://www.timesdispatch.com/servlet/Satellite?pagename=RTD%2FMGArticle%2FRTD_BasicArticle&c=MGArticle&cid=1128769044441&path=

[Go Back](#)